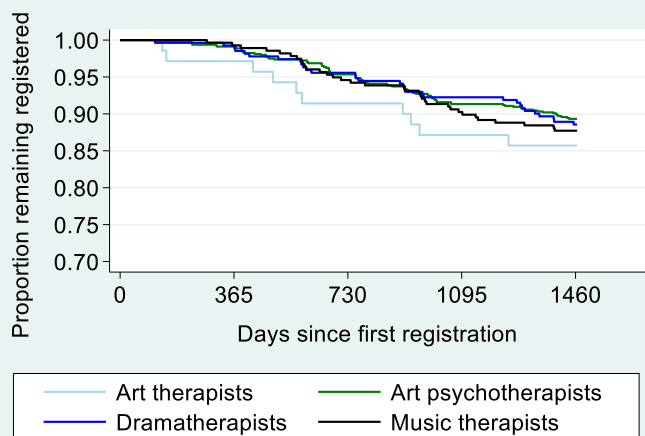


**INTRODUCTION**

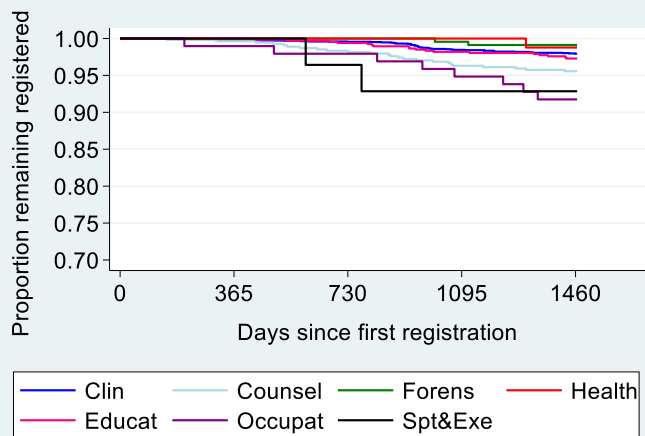
These modality specific analyses are a supplement to the whole profession analyses and the main report, both of which should also be read to understand the methods and context of this work.

One specific point of note here is that registrants holding multiple modalities will be counted multiple times, once in each of their modalities. In the whole profession analyses all registrants are only counted once within any given profession.



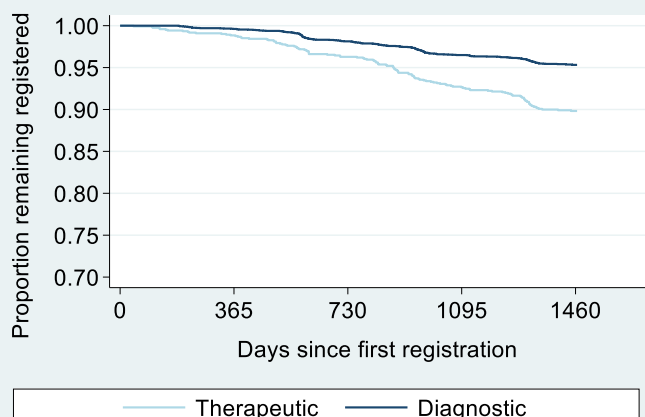
**Arts therapists (2014-18)**

Modality	Retention after 4 years	
	%	95% CI
Art therapists	85.7	75.1 to 92.1
Art psychotherapists	89.3	87.0 to 91.3
Dramatherapists	88.6	84.1 to 91.8
Music therapists	87.7	83.2 to 91.1



**Practitioner Psychologists (2013-2017)**

Modality	Retention after 4 years	
	%	95% CI
Clinical psychologists	97.9	97.3 to 98.4
Counselling psychologists	95.6	93.5 to 97.0
Forensic psychologists	99.1	97.7 to 99.7
Health psychologists	98.8	91.7 to 99.8
Educational psychologists	97.3	95.7 to 98.3
Occupational psychologists	91.8	84.2 to 95.8
Sport & Exercise psychologists	92.9	74.4 to 98.2



**Radiographers (2013-2017)**

Modality	Retention after 4 years	
	%	95% CI
Therapeutic radiographers	89.8	88.0 to 91.4
Diagnostic radiographers	95.3	94.7 to 95.9