

Finance and Resources Committee 17 November 2009

Projected registrant numbers

Executive summary and recommendations

Introduction

The attached document is a projection of the number of registrants for 2010/11 to 2014/15.

The document uses assumptions based on past registrant statistics and information about the regulation of new professions.

The figures given for new registrations via the UK approved course route are based on conservative assumptions assisted by the 2009/10 student cohort data for approved pre-registration education and training programmes.

Decision

The Committee is invited to approve the attached document

Background information

None

Resource implications

None

Financial implications

None

Appendices

Student cohort data 2009/10

Date of paper

5 November 2009

Date	Ver.	Dept/Cmte	Doc Type	Title	Status	Int. Aud.
2009-11-05	a	POL	PPR	Projected registrant numbers - coversheet	Final DD: None	Public RD: None

**Health Professions Council
Projected registrant numbers: 2010 - 2015
Finance and Resources Committee
17 November 2009**

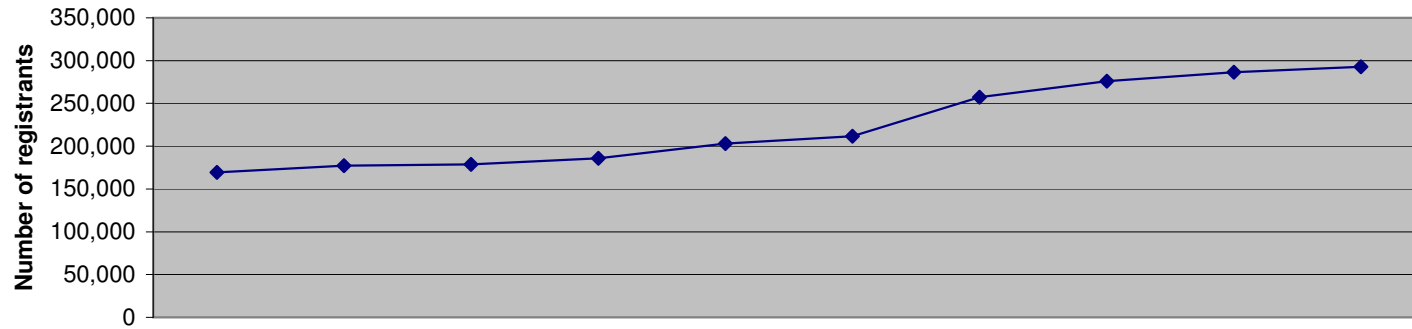
Contents

Key Assumptions	2
Number of registrants	3
New professions - transfer of voluntary register	4
New registrations - UK route	5
New registrations - International route	6
Grandparenting key assumptions	7
New registrations - Grandparenting route	8
Lapsed	9
Readmissions	10
Lapsed registrants less readmissions	11
Key	12
Appendix: Student cohort data	13

Key assumptions

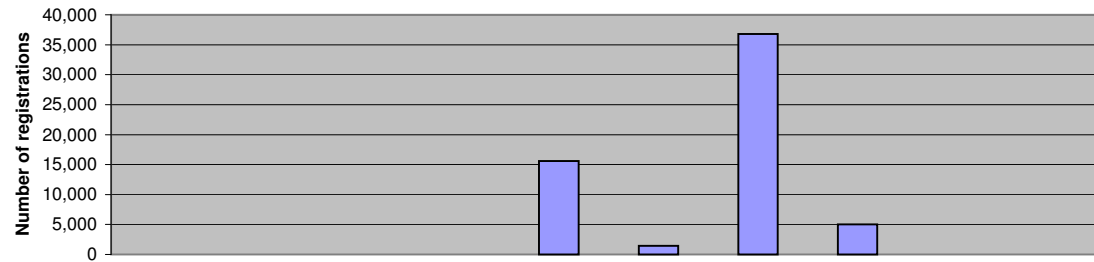
- Clinical perfusionists, clinical photographers, clinical physiologists, clinical technologists and maxillofacial and prosthetist technicians (healthcare scientists) are regulated in 2011/12 with a two year grandparenting period.
- Counsellors and psychotherapists are regulated in 2011/12 with a two year grandparenting period.
- Dance movement therapists are regulated in 2011/12 with a two year grandparenting period.
- Hearing aid dispensers are regulated on 01/04/2010 with no grandparenting period.
- Practitioners of acupuncture, herbal medicine, traditional chinese medicine and other traditional medicine systems are regulated in 2012/13 with a two year grandparenting period.

Number of registrants



	Actual 2005/06	Actual 2006/07	Actual 2007/08	Actual 2008/09	Budget 2009/10	Year 1 Forecast 2010/11	Year 2 Forecast 2011/12	Year 3 Forecast 2012/13	Year 4 Forecast 2013/14	Year 5 Forecast 2014/15
AS	2,309	2,332	2,509	2,576	2,734	2,823	2,959	3,026	3,145	3,193
BS	21,322	22,510	21,560	22,381	22,584	23,153	23,196	23,647	23,566	23,906
CAM	-	-	-	-	-	-	-	6,550	7,279	7,763
CH	12,799	12,657	13,055	12,581	12,862	12,858	13,094	13,440	13,634	13,536
CPSY	-	-	-	-	-	-	33,338	39,550	46,030	47,855
CS	3,999	4,241	4,183	4,405	4,444	4,540	4,534	4,611	4,586	4,530
DM	-	-	-	-	-	-	330	350	358	377
DT	6,260	6,267	6,663	6,700	7,079	7,267	7,570	7,697	7,952	8,023
HAD	-	-	-	-	-	1,560	1,652	1,690	1,777	1,807
HCSci	-	-	-	-	-	-	6,750	6,897	6,831	6,965
OT	26,855	28,756	28,107	30,122	30,955	32,267	32,832	33,953	34,300	35,245
ODP	8,538	8,801	9,458	9,587	10,170	10,502	11,005	11,257	11,701	11,882
OR	1,234	1,291	1,239	1,278	1,288	1,321	1,325	1,354	1,353	1,378
PA	12,343	13,183	13,703	15,019	15,354	15,912	16,114	16,603	16,724	17,149
PH	40,005	40,587	42,490	42,676	45,184	46,449	48,445	49,293	50,950	51,421
PO	816	855	832	877	891	921	930	956	960	982
PYL	-	-	-	-	10,930	11,551	11,773	12,307	12,086	12,216
RA	22,164	24,278	23,541	25,318	26,256	27,530	28,138	29,189	29,547	30,389
SL	10,725	11,472	11,375	12,169	12,483	12,991	13,200	13,636	13,764	14,134
Total	169,369	177,230	178,715	185,689	203,213	211,643	257,186	276,005	286,545	292,749

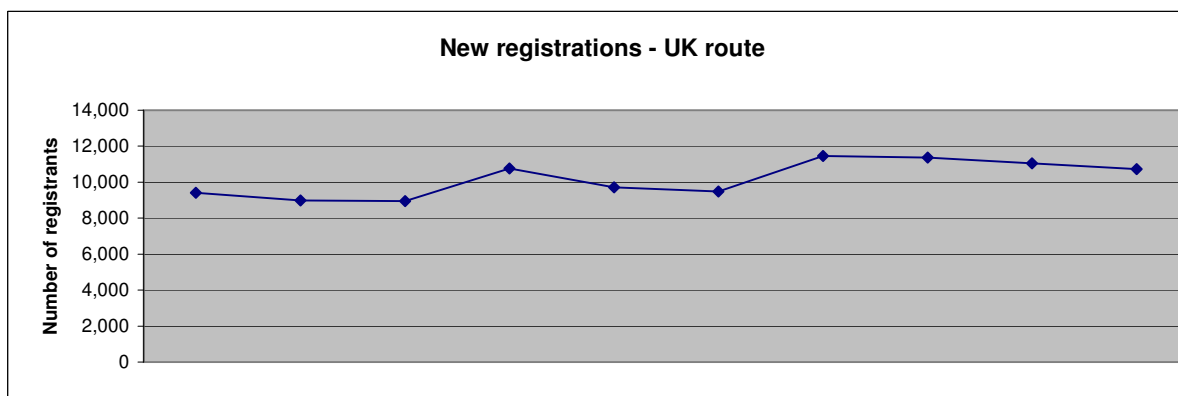
New professions - transfer of voluntary register



	Actual 2005/06	Actual 2006/07	Actual 2007/08	Actual 2008/09	Budget 2009/10	Year 1 Forecast 2010/11	Year 2 Forecast 2011/12	Year 3 Forecast 2012/13	Year 4 Forecast 2013/14	Year 5 Forecast 2014/15
AS	-	-	-	-	-	-	-	-	-	-
BS	-	-	-	-	-	-	-	-	-	-
CAM	-	-	-	-	-	-	-	5,000	-	-
CH	-	-	-	-	-	-	-	-	-	-
CPSY	-	-	-	-	-	-	30,000	-	-	-
CS	-	-	-	-	-	-	-	-	-	-
DM	-	-	-	-	-	-	300	-	-	-
DT	-	-	-	-	-	-	-	-	-	-
HAD	-	-	-	-	-	1,430	-	-	-	-
HCSci	-	-	-	-	-	-	6,500	-	-	-
OT	-	-	-	-	-	-	-	-	-	-
ODP	-	-	-	-	-	-	-	-	-	-
OR	-	-	-	-	-	-	-	-	-	-
PA	-	-	-	-	-	-	-	-	-	-
PH	-	-	-	-	-	-	-	-	-	-
PO	-	-	-	-	-	-	-	-	-	-
PYL	-	-	-	-	15,605	-	-	-	-	-
RA	-	-	-	-	-	-	-	-	-	-
SL	-	-	-	-	-	-	-	-	-	-
Total	0	0	0	0	15,605	1,430	36,800	5,000	0	0

Key assumptions

- 15,553 applied psychologists on the Register since it opened 1 July 2009 (September 2009 figures)
- 6,500 healthcare scientists transfer from their respective voluntary registers (Source: applications for registration/ voluntary register statistics).
- 1,430 hearing aid dispensers transfer from the Hearing Aid Council (Source: Hearing Aid Council).
- 30,000 counsellors and psychotherapists transfer from voluntary registers (estimate).
- 300 dance movement therapists transfer from register of the ADMP (estimate, based on figures from new professions application).
- 5,000 Practitioners of acupuncture, herbal medicine, traditional chinese medicine and other traditional medicine systems from voluntary registers (estimate).

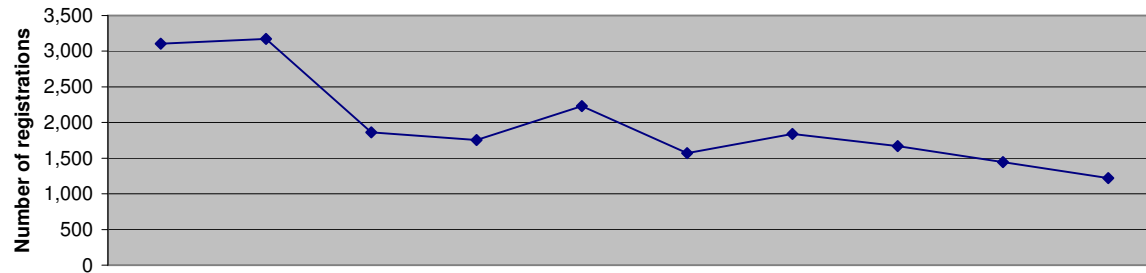


	Actual 2005/06	Actual 2006/07	Actual 2007/08	Actual 2008/09	Budget 2009/10	Year 1 Forecast 2010/11	Year 2 Forecast 2011/12	Year 3 Forecast 2012/13	Year 4 Forecast 2013/14	Year 5 Forecast 2014/15
AS	213	211	169	215	182	175	168	161	155	148
BS	905	752	677	770	668	641	616	591	567	545
CAM	-	-	-	-	-	-	-	250	250	250
CH	382	352	403	430	415	398	382	367	352	338
CPSY	-	-	-	-	-	-	2,000	2,000	2,000	2,000
CS	151	157	167	275	127	122	117	112	108	104
DM	-	-	-	-	-	-	30	30	30	30
DT	358	355	364	434	373	358	344	330	317	304
HAD	-	-	-	-	-	140	140	140	140	140
HCSci	-	-	-	-	-	-	300	300	300	300
OT	1,574	1,513	1,557	1,867	1,598	1,534	1,473	1,414	1,357	1,303
ODP	695	715	580	604	686	659	632	607	583	559
OR	32	45	44	53	50	48	46	44	42	41
PA	1,233	841	901	1,505	774	743	713	685	657	631
PH	2,086	2,266	2,282	2,446	2,364	2,269	2,179	2,092	2,008	1,928
PO	41	36	34	48	40	38	37	35	34	33
PYL	-	-	-	-	500	500	500	500	500	500
RA	995	1,093	1,110	1,316	1,299	1,247	1,197	1,149	1,103	1,059
SL	754	647	658	807	638	612	588	564	542	520
Total	9,419	8,983	8,946	10,770	9,714	9,485	11,462	11,372	11,046	10,733

Key Assumptions

- Assumptions (excluding newly regulated professions) 2010/11 to 2014/15: 4% fall p/a.
- 2010/11 uses reforecast figure for 2009/10 financial year, less decrease.
- 140 hearing aid dispensers registered per year (Source: Hearing Aid Council).
- Figures for all other new professions are estimated.

New registrations - International route



	Actual 2005/06	Actual 2006/07	Actual 2007/08	Actual 2008/09	Budget 2009/10	Year 1 Forecast 2010/11	Year 2 Forecast 2011/12	Year 3 Forecast 2012/13	Year 4 Forecast 2013/14	Year 5 Forecast 2014/15
AS	3	6	8	6	5	4	3	3	2	2
BS	417	439	231	236	300	210	180	150	120	90
CAM	-	-	-	-	-	-	-	50	50	50
CH	25	37	39	27	23	16	14	12	9	7
CPSY	-	-	-	-	-	-	400	400	400	400
CS	26	35	30	28	42	29	25	21	17	13
DM	-	-	-	-	-	-	2	2	2	2
DT	93	138	94	97	85	60	51	43	34	26
HAD	-	-	-	-	-	10	10	10	10	10
HCSci	-	-	-	-	-	-	90	90	90	90
OT	615	509	302	283	235	165	141	118	94	71
ODP	6	7	5	2	5	4	3	3	2	2
OR	3	3	4	3	2	1	1	1	1	1
PA	6	16	14	22	10	7	6	5	4	3
PH	1,193	985	567	608	663	464	398	332	265	199
PO	6	4	6	3	4	3	2	2	2	1
PYL	-	-	-	-	275	193	165	138	110	83
RA	496	820	428	336	508	356	305	254	203	152
SL	218	173	134	105	73	51	44	37	29	22
							0			
Total	3,107	3,172	1,862	1,756	2,230	1,571	1,840	1,667	1,444	1,221

Key Assumptions

- Existing professions: 50% decrease in international registrations from 2009/10 to 2014/15.
- 10 international registrations per year for hearing aid dispensers (Source: Hearing Aid Council).
- Figures for psychologists is an average figure based on information from the BPS and a 90% success rate for applications.
- Figures for other new professions are estimated.

Grandparenting key assumptions

Psychologists

- 3 year grandparenting period.
- 1,500 applications during grandparenting.
- 90% success rate (1350 successful applications).
- 50% of successful applications received in the first two years and evenly distributed.
- 50% of successful applications received in the last year - half of successful applicants registered in that year, half in the following financial year.
- These figures are estimated.

Healthcare scientists

- 2 year grandparenting period.
- 45 applications received.
- 90% success rate (40 successful applications).
- 50% successful applications received in the first year.
- 50% of applications received in the last year - half of successful applicants are registered in that year, half in the following financial year.
- Groups included in figures are clinical technologists (25 applications), maxillofacial and prosthetist technicians (10), and clinical perfusionists (0) (Source: applications for regulation). Clinical physiologists and clinical photographers are estimated at 5 applications each.

Hearing aid dispensers

- The Hearing Aid Council is already a statutory regulator. Therefore, there will not be a grandparenting period.

Counsellors and psychotherapists

- 2 year grandparenting period.
- 15,000 applications received.
- 90% success rate (13,500 successful applications).
- 50% of successful applications received in the first year.
- 50% of successful applications received in the last year.

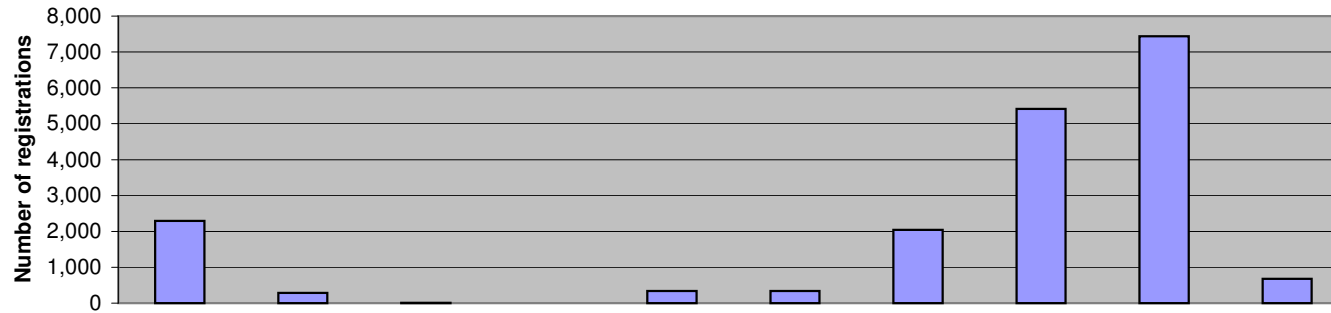
Dance movement therapists

- 2 year grandparenting period.
- 1 successful applicant received in year one; two applications received year two, one registered the year following the end of the grandparenting period.
- These figures are estimated, based on the small size of the profession. The professional body currently has grandparenting requirements for its register.

Practitioners of acupuncture, herbal medicine, traditional chinese medicine and other traditional medicine systems

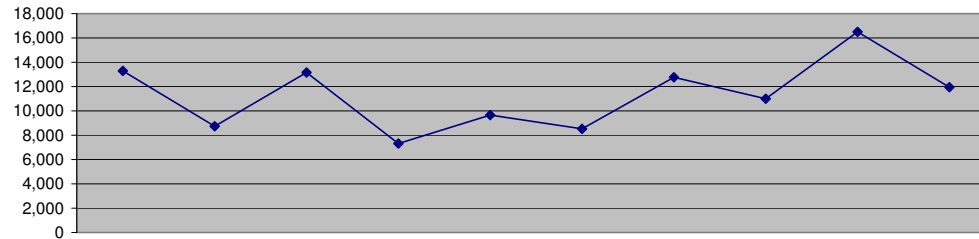
- 2 year grandparenting period.
- 3000 applications received.
- 90% success rate (2,700 successful applications)
- 50% of successful applications received in the first year.
- 50% of successful applications received in the last year, half of successful applicants registered in that year, half in the following financial year.

New registrations - Grandparenting route



	Actual 2005/06	Actual 2006/07	Actual 2007/08	Actual 2008/09	Budget 2009/10	Year 1 Forecast 2010/11	Year 2 Forecast 2011/12	Year 3 Forecast 2012/13	Year 4 Forecast 2013/14	Year 5 Forecast 2014/15
AS	35	5	-	-	-	-	-	-	-	-
BS	148	18	2	-	-	-	-	-	-	-
CAM	-	-	-	-	-	-	-	1,350	675	675
CH	1,476	111	1	-	-	-	-	-	-	-
CPSY	-	-	-	-	-	-	1,688	5,062	6,750	-
CS	318	78	2	-	-	-	-	-	-	-
DM	-	-	-	-	-	-	1	1	1	-
DT	1	0	-	-	-	-	-	-	-	-
HAD	-	-	-	-	-	-	-	-	-	-
HCSci	-	-	-	-	-	-	20	10	10	-
OT	3	0	-	-	-	-	-	-	-	-
ODP	10	18	-	-	-	-	-	-	-	-
OR	0	0	-	-	-	-	-	-	-	-
PA	115	20	2	-	-	-	-	-	-	-
PH	178	33	2	-	-	-	-	-	-	-
PO	1	0	-	-	-	-	-	-	-	-
PYL	-	-	-	-	337	338	337	338	-	-
RA	1	0	-	-	-	-	-	-	-	-
SL	9	0	-	-	-	-	-	-	-	-
Total	2,295	283	9	0	337	338	2,046	5,411	7,436	675

Lapsed

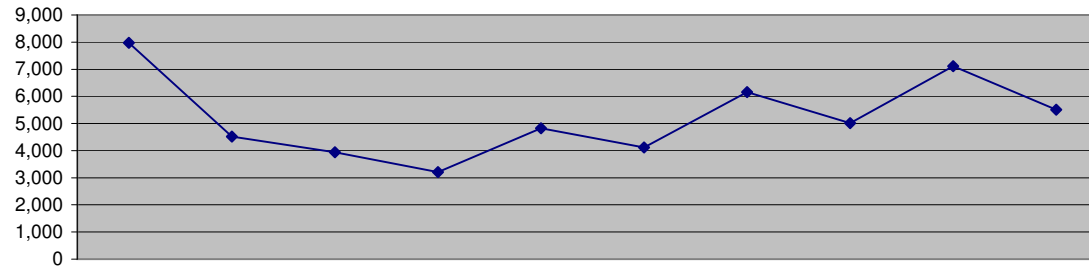


	Actual 2005/06	Actual 2006/07	Actual 2007/08	Actual 2008/09	Budget 2009/10	Year 1 Forecast 2010/11	Year 2 Forecast 2011/12	Year 3 Forecast 2012/13	Year 4 Forecast 2013/14	Year 5 Forecast 2014/15
AS	27	311	52	151	59	178	71	192	76	204
BS	2,367	250	2,457	577	1,530	565	1,505	580	1,537	589
CAM	-	-	-	-	-	-	-	200	328	728
CH	109	1,172	153	821	313	836	321	458	336	886
CPSY	-	-	-	-	-	-	1,500	1,667	3,955	1,151
CS	359	42	407	98	259	111	295	113	300	229
DM	-	-	-	-	-	-	6	17	35	18
DT	46	694	68	401	158	460	182	492	192	517
HAD	-	-	-	-	-	40	78	165	85	178
HCSci	-	-	-	-	-	-	320	338	690	342
OT	3,531	346	3,246	744	1,998	774	2,097	821	2,207	858
ODP	106	1,148	97	553	217	661	263	715	281	761
OR	192	13	146	32	84	32	86	33	88	34
PA	1,797	77	1,084	338	900	384	1,034	403	1,079	418
PH	1,018	4,249	1,158	2,637	1,038	2,937	1,161	3,149	1,232	3,312
PO	110	9	112	22	59	22	60	23	62	24
PYL	-	-	-	-	500	547	1,155	589	1,231	604
RA	2,386	262	3,044	642	1,738	656	1,789	703	1,897	739
SL	1,234	158	1,133	296	794	312	844	330	886	344
Total	13,282	8,731	13,157	7,312	9,647	8,515	12,768	10,988	16,497	11,935

Key assumptions

- Renewal years are shown in grey.
- Lapsed figures include voluntary removal, deceased registrants and struck-off registrants.
- 2.5% of professions lapse in years where they are not in renewal; 6.5% of professions lapse in years where they are in renewal.
- 5% of new professions lapse in years where they are not in renewal; 10% of new professions lapse in years where they are in renewal.
- Lapsing figures include 1% to account for retiring registrants and CPD audit triggered lapsing.
- Estimate used for the first year for new professions and then calculated in line with formula above.
- Lapsing includes failure to renew; voluntary removal; removals via the FTP process; and deceased registrants.
- No change in numbers lapsing owing to the introduction of online renewal in this period.

Readmissions

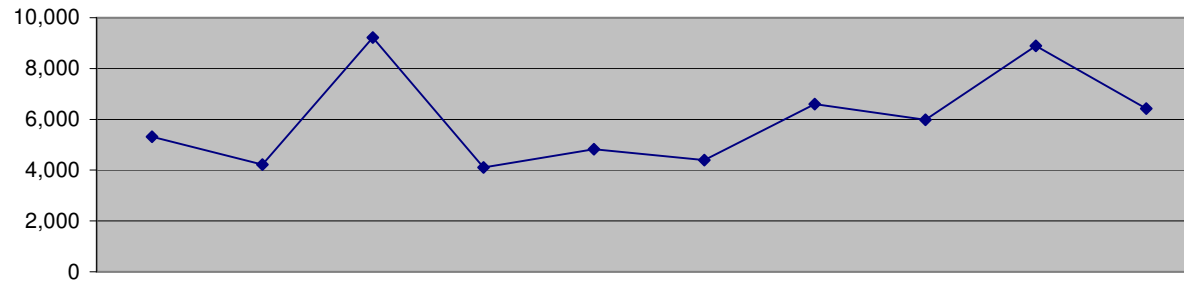


	Actual 2005/06	Actual 2006/07	Actual 2007/08	Actual 2008/09	Budget 2009/10	Year 1 Forecast 2010/11	Year 2 Forecast 2011/12	Year 3 Forecast 2012/13	Year 4 Forecast 2013/14	Year 5 Forecast 2014/15
AS	115	123	58	70	30	89	35	96	38	102
BS	1,091	259	585	231	765	282	752	290	769	295
CAM	-	-	-	-	-	-	-	100	82	237
CH	389	546	148	379	156	418	161	426	168	443
CPSY	-	-	-	-	-	-	750	417	1,285	575
CS	141	29	126	39	129	56	148	57	150	57
DM	-	-	-	-	-	-	3	4	11	4
DT	133	225	97	185	79	230	91	246	96	258
HAD	-	-	-	-	-	20	20	54	21	58
HCSci	-	-	-	-	-	-	160	84	224	85
OT	1,823	286	696	298	998	387	1,049	410	1,103	429
ODP	343	672	156	255	109	331	131	358	141	380
OR	117	22	48	13	42	16	43	17	44	17
PA	1,473	69	608	135	451	192	517	201	540	209
PH	908	1,639	585	1,217	519	1,468	581	1,574	616	1,656
PO	59	11	48	9	29	11	30	12	31	12
PYL	-	-	-	-	250	137	375	147	400	151
RA	728	529	568	257	869	328	895	352	949	369
SL	653	108	219	119	397	156	422	165	443	172
Total	7,973	4,518	3,942	3,207	4,822	4,121	6,162	5,009	7,111	5,511

Key Assumptions

- Renewal years are shown in grey.
- 1.25% of professions readmit in years where they are not in renewal; 3.25% of professions readmit in years where they are in renewal. This is based on previous data that indicates that 50% of those who lapse do not readmit.
- 0.25% added to readmissions figures to account for CPD audit triggered readmission.
- Estimate used for first year for new professions and then calculated using formula above.

Lapsed registrants less readmissions



	Actual 2005/06	Actual 2006/07	Actual 2007/08	Actual 2008/09	Budget 2009/10	Year 1 Forecast 2010/11	Year 2 Forecast 2011/12	Year 3 Forecast 2012/13	Year 4 Forecast 2013/14	Year 5 Forecast 2014/15
AS	-88	188	-6	81	29	89	35	96	38	102
BS	1,276	-9	1,872	346	765	282	752	290	769	295
CAM	-	-	-	-	-	-	-	100	246	491
CH	-280	626	5	442	157	418	161	33	168	443
CPSY	-	-	-	-	-	-	750	1,250	2,670	575
CS	218	13	281	59	130	56	148	57	150	172
DM	-	-	-	-	-	-	-	3	12	24
DT	-87	469	-29	216	79	230	91	246	96	258
HAD	-	-	-	-	-	20	59	111	63	120
HCSci	-	-	-	-	-	-	160	253	466	256
OT	1,708	60	2,550	447	1,000	387	1,049	410	1,103	429
ODP	-237	476	-59	298	108	331	131	358	141	380
OR	75	-9	98	19	42	16	43	17	44	17
PA	324	8	476	203	449	192	517	201	44	209
PH	110	2,610	573	1,420	519	1,468	581	1,574	616	1,656
PO	51	-2	64	13	30	11	30	12	31	12
PYL	-	-	-	-	250	410	780	441	831	453
RA	1,658	-267	2,476	385	869	328	895	352	949	369
SL	581	50	914	178	397	156	422	165	443	172
Total	5,309	4,213	9,215	4,107	4,825	4,394	6,606	5,979	8,890	6,424

Key assumptions

- Registrants who retire, emigrate, deceased registrants and others.

Key

AS	Arts therapists
BS	Biomedical scientists
CAM	Practitioners of acupuncture, herbal medicine, traditional chinese medicine and other traditional medicine systems
CH	Chiropodists and podiatrists
CPSY	Counsellors and psychotherapists
CS	Clinical scientists
DM	Dance movement therapists
DT	Dietitian
HAD	Hearing aid dispensers
HCSCi	Healthcare scientists
OT	Occupational therapists
ODP	Operating department practitioners
OR	Orthoptists
PA	Paramedics
PH	Physiotherapists
PO	Prosthetists and orthotists
PYL	Psychologists
RA	Radiographers
SL	Speech and language therapists

ADMP	Association of Dance Movement Psychotherapy
BPS	British Psychological Society

N.B: Dance Movement Therapists are likely to be regulated in the Arts therapists part of the Register, but are shown separately in this document for clarity.

Appendix: Student cohort 2009/10

	<i>Number of students expected to complete in each profession this year</i>		<i>Percentage of programme data these student numbers are based on</i>			<i>Number of students expected to complete in each profession this year weighted to 100%</i>			<i>Number of students expected to complete in each profession this year amended to reflect HESA continuation rate</i>	
AS	237	65%			365			282		
BS	262	55%			476			368		
CH	392	71%			552			427		
CPSY	-	-			-			-		
CS	0	0%			Unknown			Unknown		
DM	-	-			-			-		
DT	504	63%			800			618		
HAD	-	-			-			-		
HCSci	-	-			-			-		
OT	2,112	65%			3,249			2,512		
ODP	1,010	73%			1,384			1,069		
OR	40	50%			80			62		
PA	979	42%			2,331			1,802		
PH	2,039	72%			2,832			2,189		
PO	65	100%			65			50		
PYL	-	-			-			-		
RA	1,554	82%			1,895			1,465		
SL	705	66%			1,068			826		
Total	9,899				15,229			11,772		

Key assumptions

- 65% (average) of programmes have supplied us with student cohort data
- We have no data from the Association of Clinical Scientists (Certificate of Attainment)
- We have no data from the Institute of Biomedical Science (Certificate of Competence) which is the approved programme for the majority of biomedical scientists
- We have no data from practitioner psychologists approved programmes
- We have no projected data from HAC programmes
- We have no projected information about which CPSY programmes are likely to be approved
- We have no projected information about which HCSci programmes are likely to be approved
- We have no projected information about which CAM programmes are likely to be approved
- The student cohort data is the number of students which the education provider can deliver the programme for. There is an unknown variance each year between the projected number and the actual intake number
- Completion rate is taken from HESA data which is based on full-time first degree starters only and is a sector average. 77.3%