

Operations Report to Finance & Resources Committee, 24th April 2008

Contents

<u>Department</u>	<u>Page</u>
Registrations – Richard Houghton	2
Project management – Claire Phillips	4
Business improvement – Roy Dunn	11
Approvals & annual monitoring – Abigail Creighton	12

Registrations – Richard Houghton

Summary

This paper provides an update from the Registration Department for the period 1 February 2008 to 29 February 2008.

1) Operational Performance

a) Telephone Calls

i) UK Telephone Calls - During the period from 1 February 2008 to 29 February 2008 the team received a total of 11,675 telephone calls which is 2,022 more than the same period two years ago which equates to a 21% increase in the volume of telephone calls received. 9,549 telephone calls were answered which was 1,594 more than when compared to the same period two years ago.

ii) International Telephone Calls - During the period from 1 February 2008 to 29 February 2008 the team received a total of 1,063 telephone calls, 93% of which were answered.

b) Application Processing

i) UK Applications - A total of 375 new applications were received during this period and 386 individuals were registered. Applications took on average seven working days to process which exceeds our service standard of processing applications within ten working days of receipt.

Applications for readmission took an average of six working days to process which exceeds our service standard of processing applications within ten working days of receipt.

ii) International Applications - A total of 177 new international applications were received in this period and 71 individuals were registered. Applications were being processed within six weeks of receipt which exceeds our service standard of processing applications within three months of receipt of all documents.

c) Emails

i) UK Emails - The team received approximately 60/80 emails per day and responded to these within 48 hours of receipt which compares favourably with our service standard of five working days response time.

ii) International Emails - The team received approximately 20/30 emails per day and managed to respond to these within 48 hours of receipt which compares favourably with our service standard of five working days response time.

d) Registration Renewal

At the start of December 2007 25,556 radiographers were invited to renew their registration. Of the number originally invited to renew registration, 9.6% of radiographers lapsed from the Register. This compares less favourably with 2006 when 7.2% of radiographers lapsed.

At the start of February 2008 42,696 physiotherapists were invited to renew their registration and as at 7 April 2008 31,053 had renewed their registration. Registrants have until 30 April 2008 to renew their registration.

2) Employee Resource

The department is operating within the budgeted headcount and has successfully advertised and recruited for a number of vacant

Registration Advisor positions. All new Registration Advisors employees are due to commence employment by 1 May 2008.

Project management – Claire Phillips

HPC Major Projects April FY 2008/9 Narrative

No.	Project name	Commentary
MP25	Application Server Upgrade	<ul style="list-style-type: none"> Project has completed
MP4	On-boarding of Hearing Aid Council	<ul style="list-style-type: none"> Project has been initiated, with a due date of 1st April 2009
MP5	Equality and Diversity Project Phase 1	<ul style="list-style-type: none"> Project has completed. Equality and Diversity Scheme has been published.
MP24	Stannary street	<ul style="list-style-type: none"> Project complete subject to snagging
MP27	Replacement of Finance system	<ul style="list-style-type: none"> For the purposes of reporting this project has been split into two phases Phase 1 covers the roll out of Sage 200 – the business critical aspect of the system replacement Phase 2 covers the roll out of the electronic purchase order system Both phases are currently running to schedule
MP28	Change of LISA access rights	<ul style="list-style-type: none"> In order to mitigate the risk of rolling out the application server upgrade and the change of LISA access rights development closely together, the due date for this project has been pushed back to 25th April 08
MP14	Online LISA authentication	<ul style="list-style-type: none"> In order to mitigate the risk of rolling out the application server upgrade and the online LISA authentication development closely together, the due date for this project has been pushed back to 25th April 08
MP31	Independent Safeguarding Authority	<ul style="list-style-type: none"> Project has been closed shortly after initiation due to a change in government approach Project to make operational preparations will be opened at a later date
MP32	Equality and Diversity Phase 2	<ul style="list-style-type: none"> Project to be initiated shortly
MP33	FTP Net regulate statuses rationalisation	<ul style="list-style-type: none"> Project to be initiated shortly
MP34	Online Applications and Renewals	<ul style="list-style-type: none"> Project to be initiated shortly

HPC Major Projects 2007/8 Scorecard

No.	Prior ity	Project name	Project Description	Project Sponsor	Project Lead	Project Charter	Project Plan	Business Reqs (if IT)	07/08 Budget*	Due Date	Status
MP25	1	Application Server Upgrade	Application Server Upgrade	M Seale	G Gaskins	Y	Y	NA	£30 (C)	31/10/07 31/12/07 31/03/08	Complete
MP2	2b	Continuing Professional Development (CPD)	Implementation of processes to audit & track registrants' evidence of CPD.	G Ross-Sampson	R Houghton	Y	Y	Y	£85 (C) £80 (O)	30/04/09	
MP3	2b	On-boarding of the Practitioner Psychologists	On-boarding of the Practitioner Psychologists	G Ross-Sampson	R Houghton	Y	Y	N	£132 (O)	14/12/08 10/02/09	
MP4	2b	On-boarding of Hearing Aid Council	Absorption of the Hearing Aid Council	G Ross-Sampson	R Houghton	Y	Y	N	On hold	01/04/09	
MP5	2b	Equality and Diversity Project Phase 1	Revision of equality & diversity policies to ensure HPC is pro-actively eliminating discrimination	M Seale	M Guthrie	Y	Y	N	£43 (O)	31/03/08	Complete
MP30	2c	Registration fee change 09	Realignment of registration fee charges	M Seale	S Leicester	Y	Y	NA	-	15/06/09	
MP24	2d	Stannary street	Refurbishment of Stannary Street building	M Seale	S Hall	N	N	N	£1.6M (C) £43 (O)	31/01/08 10/03/08	Complete subject to snagging
MP27	3	Replacement of Finance system Phase 1	Replacement of SAGE 200	S Leicester	M Cheema	Y	Y	Y	£19 (C)	30/04/08 18/04/08	

Key:

Green – Project is due to meet deadline

Amber – Indications are that it is probable that project will miss deadline

Red – Project has missed deadline



Status of project has improved since last reporting cycle



Status of project is static since last reporting cycle



Status of project has declined since last reporting cycle

* All amounts in £000's




(C) = Capex

(O) = Opex

Date: 2007-05-31
Ver.: a
Dept/Cmte: OPT
Doc Type: ADD
Title: Project summary 2007-8 May

Status: Draft
DD: None
Int. Aud.: Public
RD: None

HPC Major Projects 2007/8 Scorecard

No.	Priority	Project name	Project Description	Project Sponsor	Project Lead	Project Charter	Project Plan	Business Reqs (if IT)	07/08 Budget*	Due Date	Status
MP27	3	Replacement of Finance system Phase 2	Roll out of online purchase order approval system	S Leicester	M Cheema	Y	Y	Y	£19 (C)	18/07/08	
MP28	3	Change of LISA access rights	Full review and implementation of revised access rights for LISA	S Leicester	M Cheema	Y	Y	Y	£35 (C)	15/04/08 25/04/08	
MP14	4	Online LISA authentication	Giving registrants the ability to update their personal details online	G Ross-Sampson	R Houghton	N	Y	Y	-	07/12/07 15/04/08 25/04/08	
MP31	2a	Independent Safeguarding Authority	Implementation of changes to allow HPC to comply with the requirements of the Independent Safeguarding Authority	M Seale	K Johnson	N	N	N	£21 (C) £40 (O)	Project closed	Project closed
MP32	2b	Equality and Diversity Phase 2	Implementation of changes to allow HPC to provide demographic statistics of registrants to the DH	M Seale	R Houghton	N	N	N	£30 (C) £9.5 (O)	Not initiated	Not initiated
MP33	3	FTP Net regulate statuses rationalisation	Operational and technology changes to optimise use of registrations system within FTP	M Seale	K Johnson	N	N	N	£64 (C)	Not initiated	Not initiated
MP34	4	Online Applications and Renewals	Providing registrants the ability to apply and renew online	G Ross-Sampson	R Houghton	N	N	N	£300 (C) £22 (O)	Not initiated	Not initiated

Key:

Green – Project is due to meet deadline

Amber – Indications are that it is probable that project will miss deadline

Red – Project has missed deadline



Status of project has improved since last reporting cycle



Status of project is static since last reporting cycle



Status of project has declined since last reporting cycle

* All amounts in £000's

(C) = Capex

(O) = Opex

Business Improvement – Roy Dunn

Human Resources

No changes.

Quality Management System (QMS) review meetings

Below is a list of recent quality management system reviews:

- Registrations, UK & International
- Management review
- Quality

QMS process updates

Below is a list of recent process changes on the QMS:

Parameter pages for all professions

Parameter pages for all department processes

Last BSI Audit

The last BSi audit was held on 8th April 2008. The areas reviewed were:-

- Quality management
- Registrations – UK
- Registrations – International/Grandparenting looking particularly at how phone call, correspondence and registration system data quality are monitored in house
- Risk Based Information & Data security across HPC

HPC passed this audit with no Non-Conformities.

Next BSI Audit

The next BSI audit is scheduled for 23rd October 2008. This external audit will review the following areas of the management system, Approvals & Monitoring; Purchasing & Supplier Evaluation; Secretariat; Staff development and Training - Management system organisation & review.

We are now working on a RISK based audit sequence, evaluating items in the Risk Register for particular analysis. However we still need to keep the departmental level audits going, to ensure compliance.

Note: The BSI has dropped the third lowest level of concern "Issue" due to pressure from UKAS in January 2008. There are now 3 levels of non - conformity;

- Major Non-Conformity
- Non-Conformity
- Minor Non-Conformity = (formerly issue)

Business Continuity

We are working with an external Continuity consultant to update the current Disaster Recovery plan to more match a Business Continuity plan, matching BS25999 requirements. Training exercises are being developed for EMT and MMT.

Information & Data Management

A series of 5 potential archive sites have been visited including the existing supplier and a Salt Mine in Cheshire.

Costs and service options are being analysed with a view to enhancing physical and process driven security.

All existing archived material has been re-boxed in more secure cartons, and been given increased security with tamper evident security tags.

Monthly management reports formats are being updated for the new Financial year.

Education – Approvals and monitoring

Approval process

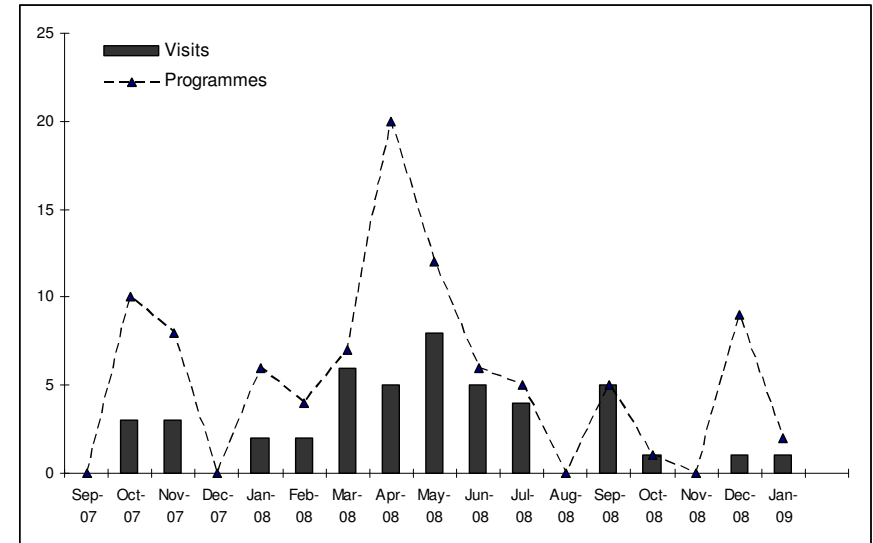
The department now has 38 visits in the schedule for the current academic year. These 38 visits will consider 78 programmes. The March – July 2008 period represents the peak workload for visits.

Compared to previous academic years, there are considerably less approval visits this year. There are a higher number of visits in July as most of these are visits to Ambulance service IHCD programmes and these programmes do not typically start in September each year, so it is still possible to hold visits in July 2008.

	Visits	Programmes
Sep-07	0	0
Oct-07	3	10
Nov-07	3	8
Dec-07	0	0
Jan-08	2	6
Feb-08	2	4
Mar-08	6	7
Apr-08	5	20
May-08	8	12
Jun-08	5	6
Jul-08	4	5
Aug-08	0	0

A further 8 visits are already scheduled in the next academic year.

	Visits	Programmes
Sep-08	5	5
Oct-08	1	1
Nov-08	0	0
Dec-08	1	9
Jan-09	1	2



Annual monitoring process

The department is in the middle of its peak of annual monitoring work. The expected submission dates from education providers are at the end of each month.

To date, 88% of expected audit submissions have been received, with the majority on time. There was an 8% non-submission rate in March.

	Audit submissions	
	Expected	Actual
Dec-07	18	18
Jan-08	15	15
Feb-08	34	34
Mar-08	33	29
Apr-08	16	0

Actual submissions		
On time	Late	Non submissions
6	2	0
14	1	0
31	3	0
25	0	4
-	-	-

May-08	1	0
Jun-08	1	0
Jul-08	0	0
Aug-08	0	0

-	-	-
-	-	-
-	-	-
-	-	-

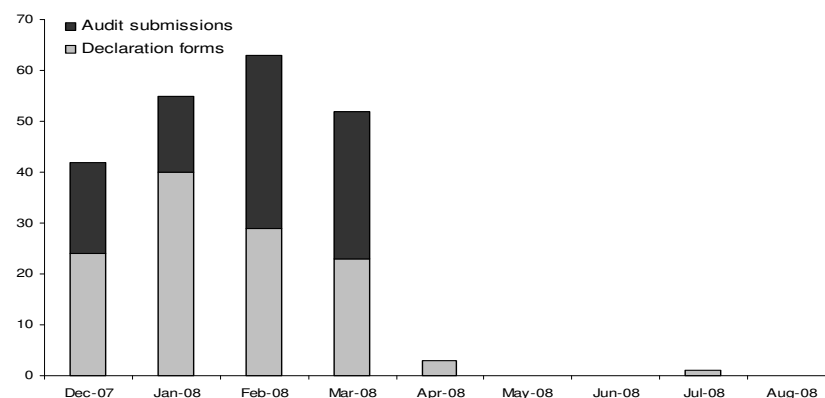
All audit submissions are assessed by visitors (either on an assessment day or by post). Recommendations from visitors are considered by the Education and Training Panel. Of the 67 submissions received before the end of March 2008, 24 (36%) have been concluded and 43 (64%) are ongoing. The entire process is taking three months on average, which matches the estimated time period.

To date, 88% of expected declaration forms have been received, with the majority on time. There was an 8% non-submission rate in March

	Declaration forms	
	Expected	Actual
Dec-07	24	24
Jan-08	40	40
Feb-08	29	29
Mar-08	25	23
Apr-08	9	3
May-08	0	0
Jun-08	1	0
Jul-08	8	1
Aug-08	1	0

Actual declaration forms		
On time	Late	Non submissions
23	1	0
37	3	0
27	2	0
25	0	0
4	-	-
-	-	-
-	-	-
3	-	-
-	-	-

All declaration forms go direct to the Education and Training Panel for consideration. 111 programmes have been considered to date. The entire process is taking two months on average, which is within our three months estimated time period.



Major change process

The Department has received 40 minor/major change submissions for 72 programmes in the current academic year. 60% of these submissions have been concluded. On average it is taking three months to consider each submission. This is in line with our guidance to education providers.

	Submissions	Programmes
Sep-07	8	13
Oct-07	6	7
Nov-07	3	4
Dec-07	2	5
Jan-08	9	12
Feb-08	10	26
Mar-08	2	5
Total	40	72

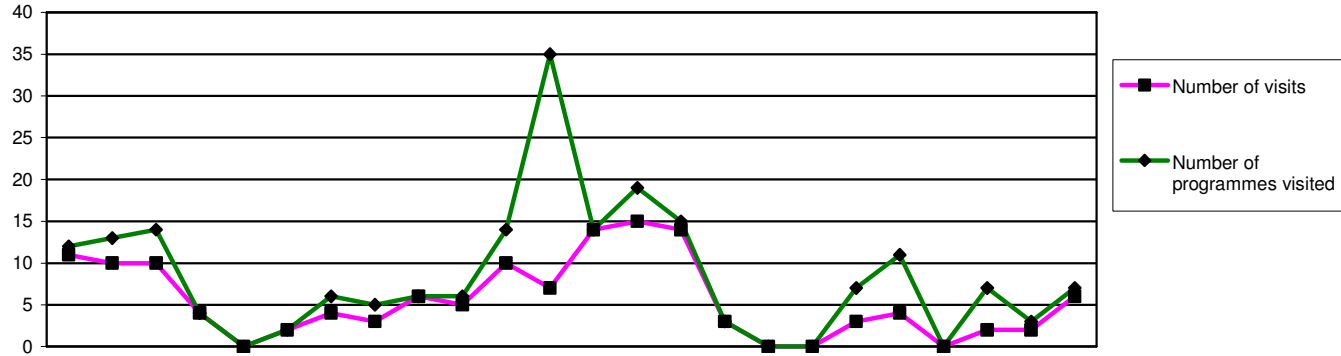
Employees

There are no employee changes to report.

Publications

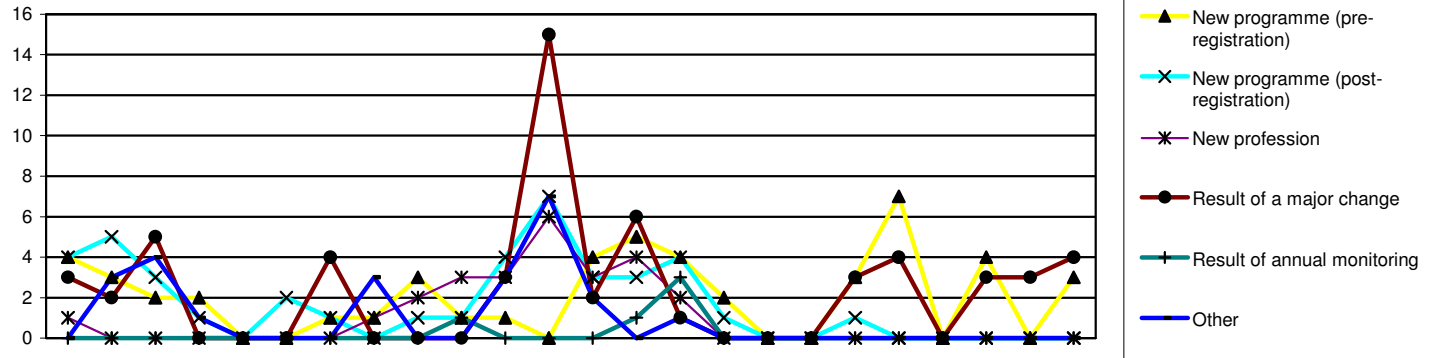
The second annual report (which offers a detailed analysis of the three operational processes during the 2006-07 academic year) has

been circulated to all education providers, visitors and educational stakeholders, including professional bodies.



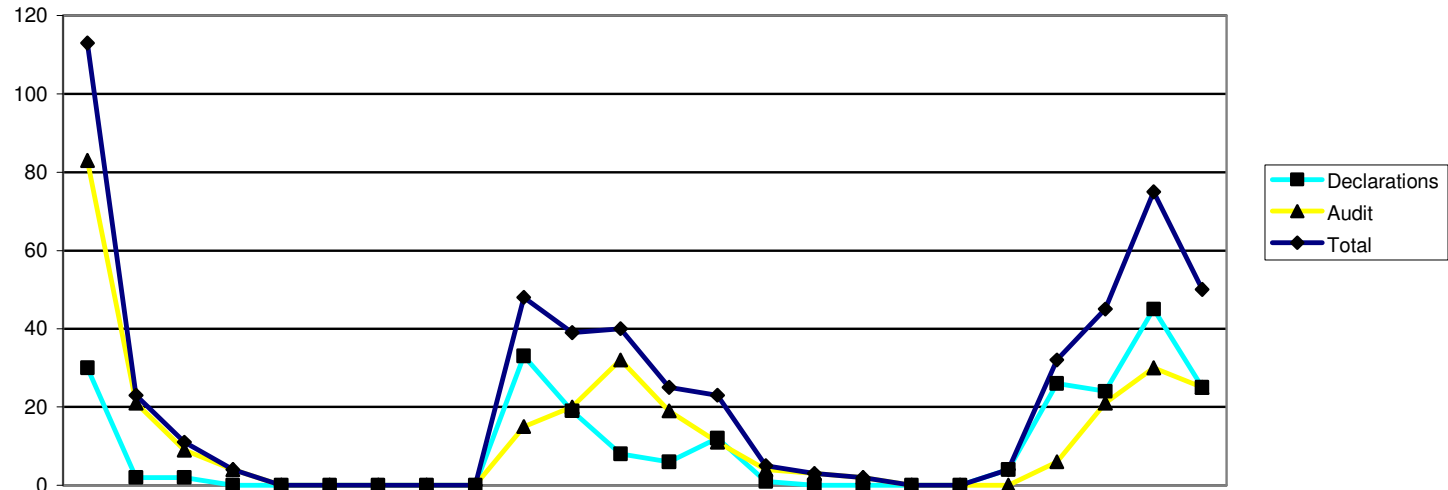
	2006			2007									2008											
	Apr	May	Jun	Jul	Aug	Sep	Oct	Nov	Dec	Jan	Feb	Mar	Apr	May	Jun	Jul	Aug	Sep	Oct	Nov	Dec	Jan	Feb	Mar
Overview of approvals																								
Number of visits	11	10	10	4	0	2	4	3	6	5	10	7	14	15	14	3	0	0	3	4	0	2	2	6
Number of programmes visited	12	13	14	4	0	2	6	5	6	6	14	35	14	19	15	3	0	0	7	11	0	7	3	7

2004/5	2005/6	2006/7	2007/8
FYE	FYE	FYE	YTD
0	0	101	63
22	27	117	86



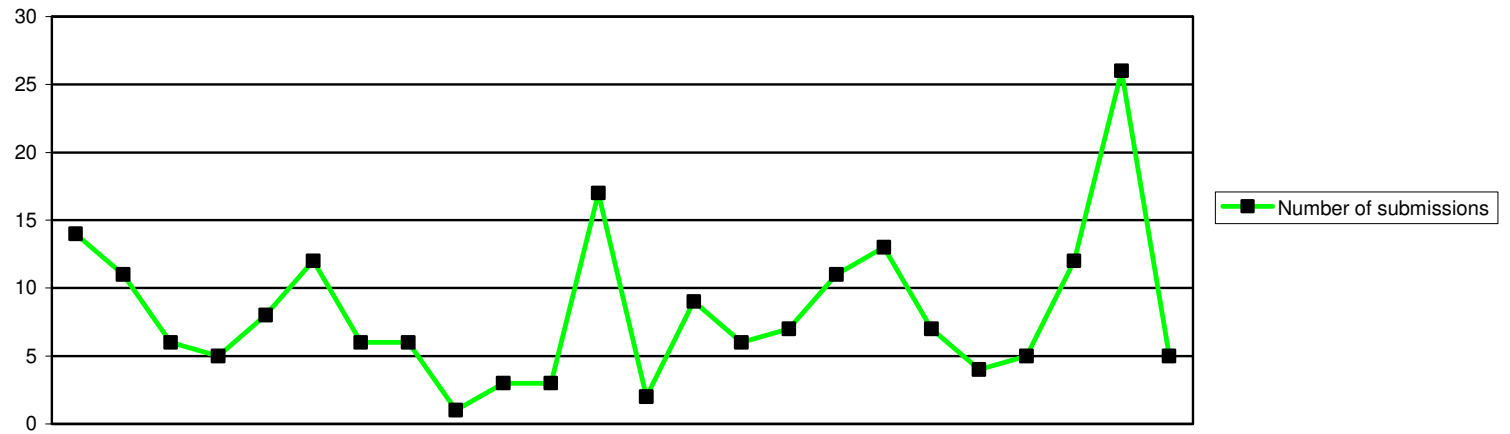
	2006			2007									2008											
	Apr	May	Jun	Jul	Aug	Sep	Oct	Nov	Dec	Jan	Feb	Mar	Apr	May	Jun	Jul	Aug	Sep	Oct	Nov	Dec	Jan	Feb	Mar
Reason for programme visited																								
New programme (pre-registration)	4	3	2	2	0	0	1	1	3	1	1	0	4	5	4	2	0	0	3	7	0	4	0	3
New programme (post-registration)	4	5	3	1	0	2	1	0	1	1	4	7	3	3	4	1	0	0	1	0	0	0	0	0
New profession	1	0	0	0	0	0	0	1	2	3	3	6	3	4	2	0	0	0	0	0	0	0	0	0
Result of a major change	3	2	5	0	0	0	4	0	0	0	3	15	2	6	1	0	0	0	3	4	0	3	3	4
Result of annual monitoring	0	0	0	0	0	0	0	0	0	1	0	0	0	1	3	0	0	0	0	0	0	0	0	0
Other	0	3	4	1	0	0	3	0	0	3	7	0	2	0	1	0	0	0	0	0	0	0	0	0
Total	12	13	14	4	0	2	6	5	6	6	14	35	14	19	15	3	0	0	7	11	0	7	3	7

2004/5	2005/6	2006/7	2007/8
FYE	FYE	FYE	YTD
0	0	18	32
0	5	29	12
0	5	16	9
0	5	32	26
0	5	1	4
0	5	21	3
0	25	117	86

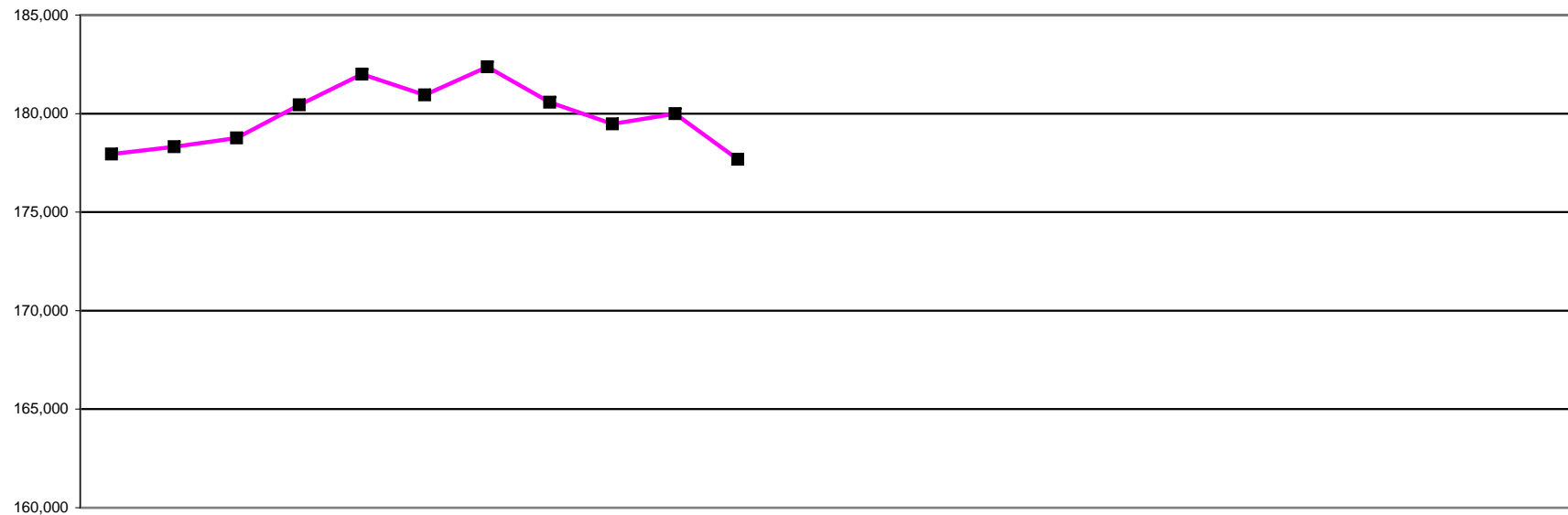


Annual monitoring submissions	2006			2007									2008											
	Apr	May	Jun	Jul	Aug	Sep	Oct	Nov	Dec	Jan	Feb	Mar	Apr	May	Jun	Jul	Aug	Sep	Oct	Nov	Dec	Jan	Feb	Mar
Declarations	30	2	2	0	0	0	0	0	0	33	19	8	6	12	1	0	0	0	0	4	26	24	45	25
Audit	83	21	9	4	0	0	0	0	0	15	20	32	19	11	4	3	2	0	0	0	6	21	30	25
Total	113	23	11	4	0	0	0	0	0	48	39	40	25	23	5	3	2	0	0	4	32	45	75	50

2004/5	2005/6	2006/7	2007/8
FYE	FYE	FYE	YTD
0	113	94	143
0	51	184	121
0	164	278	264

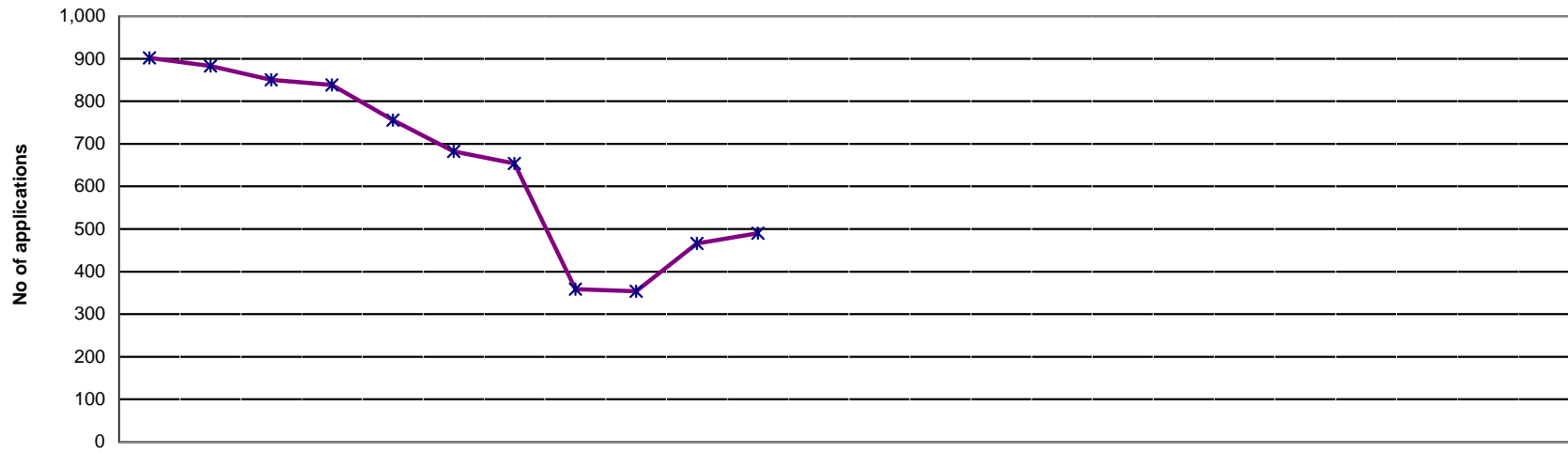


	2006			2007									2008			2004/5	2005/6	2006/7	2007/8									
	Apr	May	Jun	Jul	Aug	Sep	Oct	Nov	Dec	Jan	Feb	Mar	Apr	May	Jun	Jul	Aug	Sep	Oct	Nov	Dec	Jan	Feb	Mar	FYE	FYE	FYE	YTD
Minor/major change submissions	14	11	6	5	8	12	6	6	1	3	3	17	2	9	6	7	11	13	7	4	5	12	26	5	0	113	92	107
Number of submissions																												



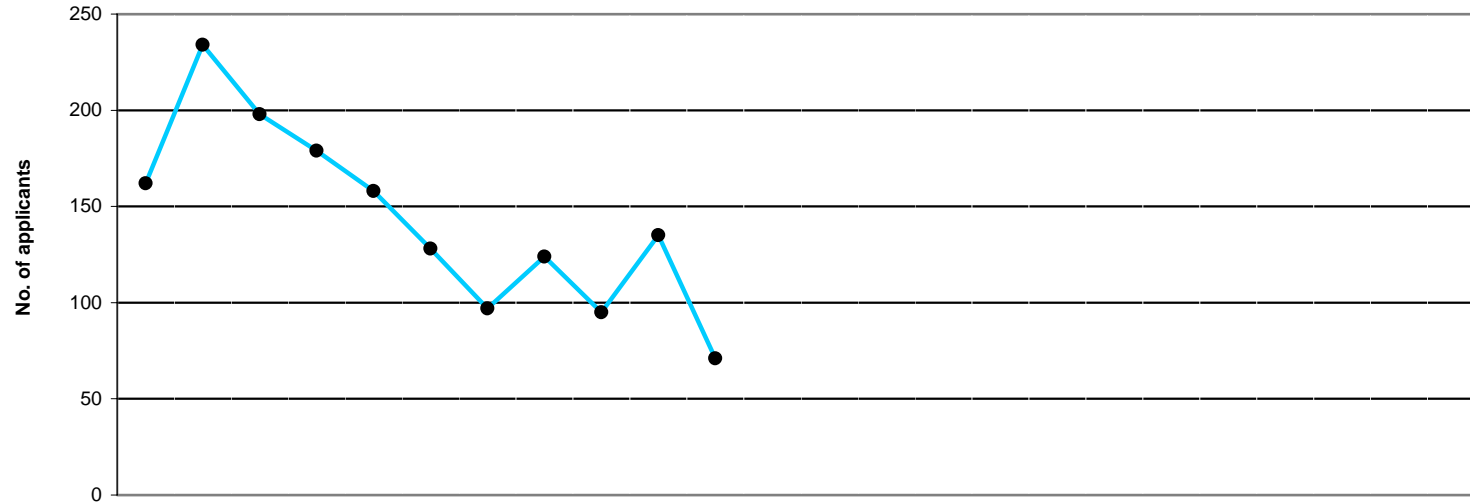
	2007												2008												2009												2005/6	2006/7	2007/8	2008/9
	Apr	May	Jun	Jul	Aug	Sep	Oct	Nov	Dec	Jan	Feb	Mar	Apr	May	Jun	Jul	Aug	Sep	Oct	Nov	Dec	Jan	Feb	Mar	Apr	May	Jun	Jul	Aug	Sep	Oct	Nov	Dec	Jan	Feb	Mar	FYE	FYE	FYE	YTD
AS	2,369	2,387	2,401	2,416	2,426	2,442	2,464	2,400	2,487	2,510	2,492																									2,309	2,332	2,492		
BS	22,588	22,646	22,698	22,777	22,847	22,696	22,680	22,665	20,992	21,426	21,461																									21,322	22,510	21,461		
CH	12,683	12,692	12,703	12,822	12,946	12,999	13,041	13,065	13,068	13,056	13,056																									12,799	12,657	13,056		
CS	4,283	4,297	4,304	4,291	4,288	3,958	4,061	4,109	4,121	4,144	4,148																									3,999	4,241	4,148		
DT	6,297	6,318	6,363	6,458	6,541	6,592	6,636	6,658	6,661	6,690	6,695																									6,260	6,267	6,695		
OT	28,866	28,903	28,970	29,169	29,437	29,394	29,581	27,267	27,583	27,905	27,936																									26,855	28,756	27,936		
ODP	8,841	8,874	8,892	8,931	8,967	9,175	9,274	9,331	9,353	9,410	9,424																									8,538	8,801	9,424		
OR	1,287	1,287	1,265	1,272	1,198	1,225	1,237	1,242	1,237	1,236	1,236																									1,234	1,291	1,236		
PA	13,242	13,234	13,256	13,296	13,360	12,923	13,203	13,339	13,389	13,534	13,563																									12,343	13,183	13,563		
PH	40,766	40,897	40,991	41,621	42,238	42,533	42,755	42,945	43,017	42,661	42,660																									40,005	40,587	42,660		
PO	858	857	857	852	851	755	798	818	825	832	833																									816	855	833		
RA	24,362	24,406	24,522	24,986	25,275	25,411	25,534	25,548	25,523	25,298	22,865																									22,164	24,278	22,865		
SL	11,497	11,513	11,538	11,550	11,631	10,842	11,101	11,191	11,225	11,298	11,311																									10,725	11,472	11,311		
Total	177,939	178,311	178,760	180,441	182,005	180,945	182,365	180,578	179,481	180,000	177,680																								169,369	177,230	177,680	0		

NOTE: Information captured last day of each calendar month



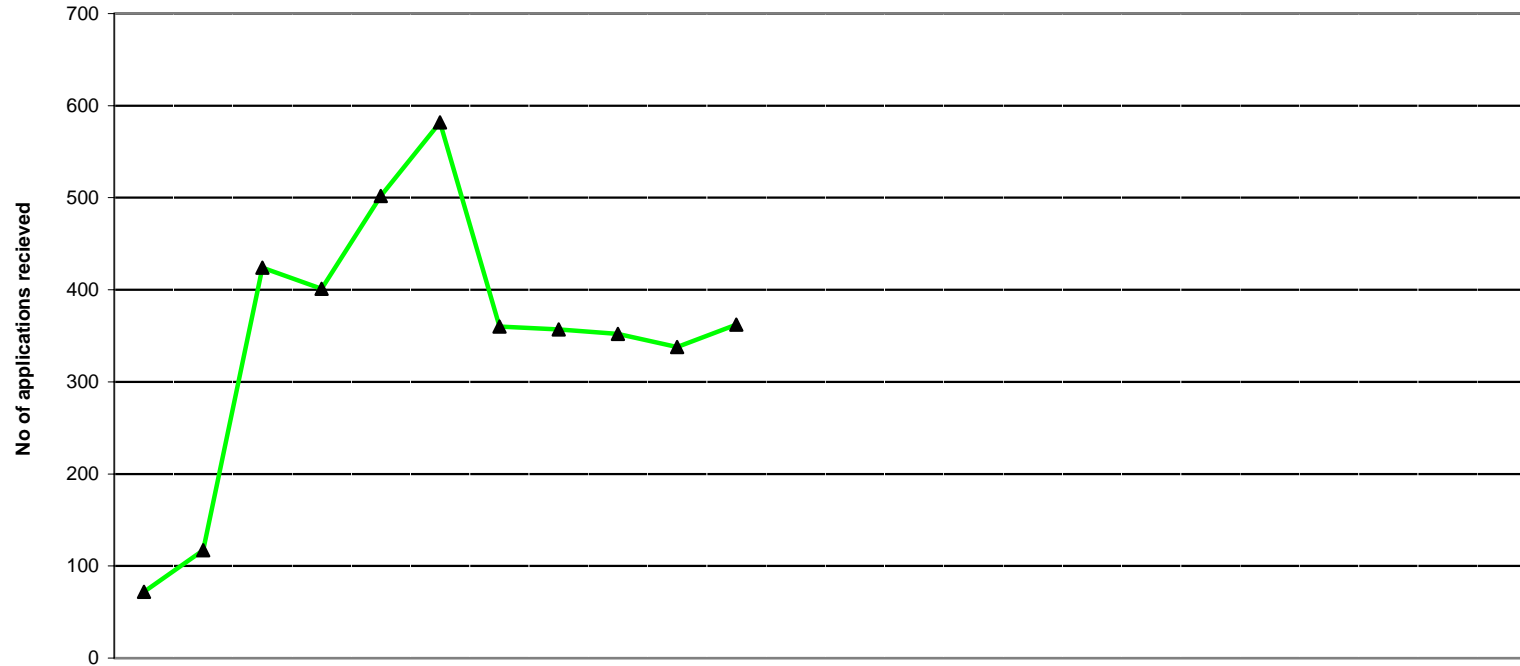
	2007												2008												2009												2005/6	2006/7	2007/8	2008/9
	Apr	May	Jun	Jul	Aug	Sep	Oct	Nov	Dec	Jan	Feb	Mar	Apr	May	Jun	Jul	Aug	Sep	Oct	Nov	Dec	Jan	Feb	Mar	Apr	May	Jun	Jul	Aug	Sep	Oct	Nov	Dec	Jan	Feb	Mar	FYE	FYE	FYE	YTD
Minimum Info	0	11	2	0	2	0	4	0	5	0	26																													
At assessment	660	684	617	622	588	543	540	220	201	282	276																													
Pending Reg Fee	242	188	231	216	166	139	110	139	148	184	188																													
Total	902	883	850	838	756	682	654	359	354	466	490																									2,908	1,498	658		
	AVERAGE																																							

NOTE: Information covers international applications status progress only
 Represents the current workload within the International Department as at the end of the month



	2007												2008												2009											
	Apr	May	Jun	Jul	Aug	Sep	Oct	Nov	Dec	Jan	Feb	Mar	Apr	May	Jun	Jul	Aug	Sep	Oct	Nov	Dec	Jan	Feb	Mar	Apr	May	Jun	Jul	Aug	Sep	Oct	Nov	Dec	Jan	Feb	Mar
Arts Therapists	2	0	2	0	0	0	1	0	1	2	0																									
Bio. Scientists	22	22	35	23	19	13	13	3	24	13	16																									
CI Scientists	2	4	2	2	3	0	0	4	1	3	1																									
Chirops/ Pods	7	3	2	3	8	2	2	2	1	5	1																									
Dietitians	6	3	7	15	7	8	7	6	4	10	5																									
OTs	29	32	23	31	23	15	7	48	16	28	9																									
ODPs	0	0	1	0	1	1	0	1	0	1	0																									
Orthoptists	0	0	1	0	0	3	0	0	0	0	0																									
Paramedics	3	0	2	2	0	1	1	0	3	0	0																									
Physiotherapists	26	110	62	56	42	42	35	27	28	47	25																									
Prosth/Orthotists	2	0	0	0	1	0	0	2	1	0	0																									
Radiographers	56	48	45	32	48	39	15	26	10	11	6																									
SLTs	7	12	16	15	6	4	16	5	6	15	8																									
TOTAL	162	234	198	179	158	128	97	124	95	135	71																									

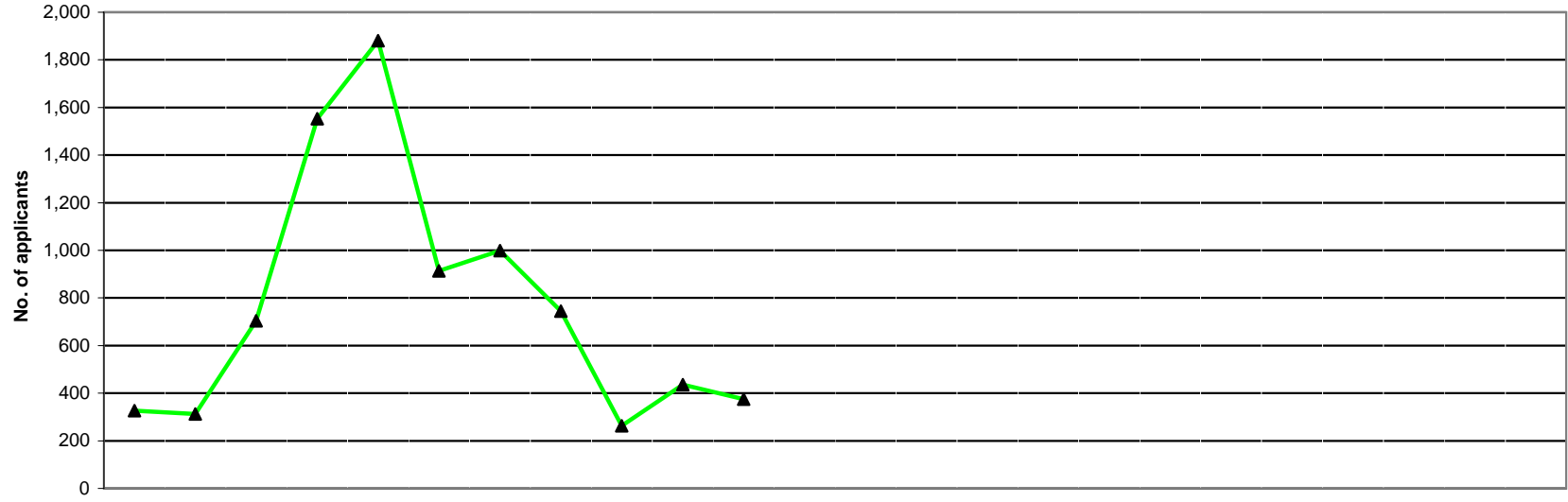
2005/6 FYE	2006/7 FYE	2007/8 FYE	2008/9 YTD
3	6	8	0
417	439	203	0
26	35	22	0
25	37	36	0
93	138	78	0
615	509	261	0
6	7	5	0
3	3	4	0
6	16	12	0
1,193	985	500	0
6	4	6	0
496	820	336	0
218	173	110	0
3,107	3,172	1,581	0



	2007			2008									2009												
	Apr	May	Jun	Jul	Aug	Sep	Oct	Nov	Dec	Jan	Feb	Mar	Apr	May	Jun	Jul	Aug	Sep	Oct	Nov	Dec	Jan	Feb	Mar	
Minimum Info	49	77	306	337	430	369	332	333	331	309	333														
Awaiting Pass List	22	39	105	39	64	205	26	21	19	27	26														
Pending Reg. Fee	1	1	13	25	8	8	2	3	2	2	3														
TOTAL	72	117	424	401	502	582	360	357	352	338	362														

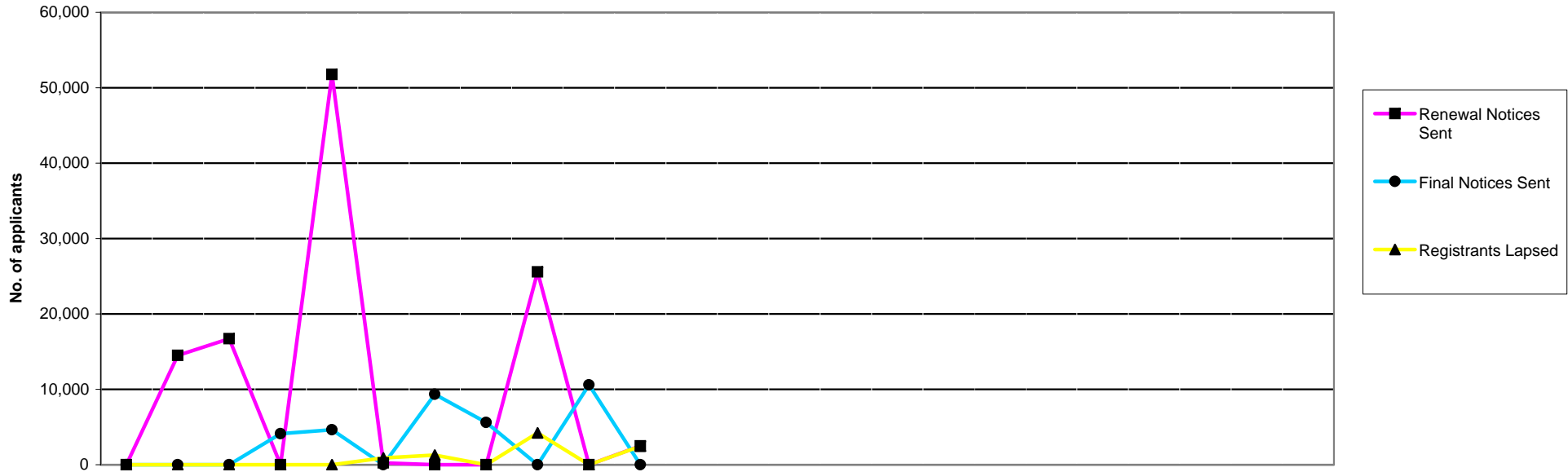
2005/6 FYE	2006/7 FYE	2007/8 FYE	2008/0 YTD
477	279	291	#DIV/0!
33	84	54	#DIV/0!
2	28	6	#DIV/0!
512	391	352	#DIV/0!
AVERAGE			

NOTE: Information covers UK applications only
Represents the current workload within the UK Registration Department as at the end of the month



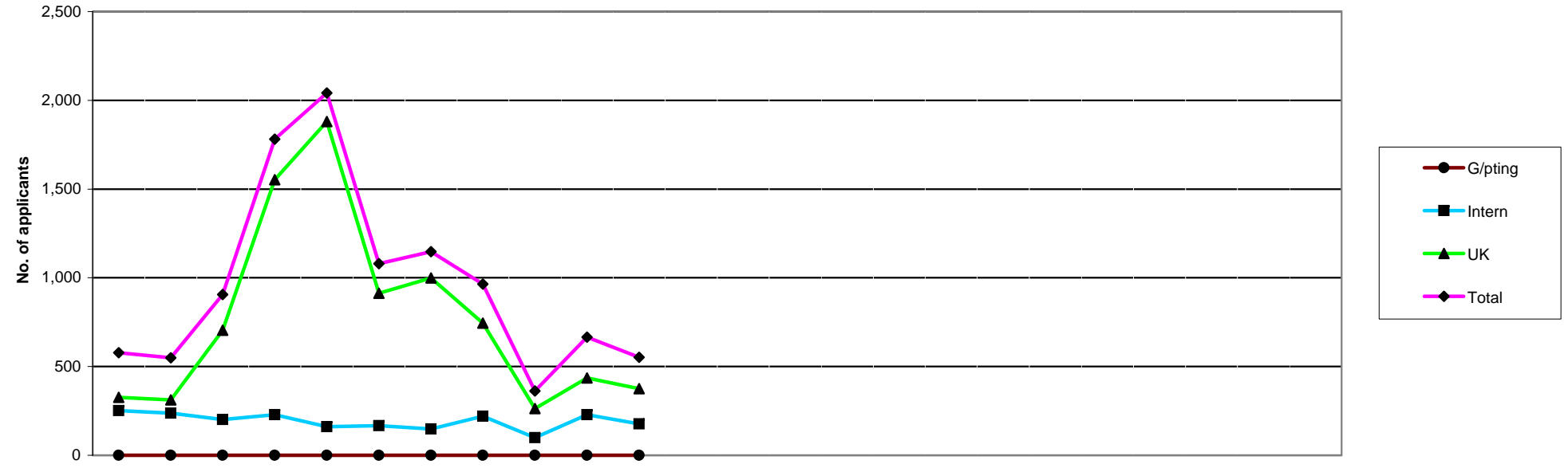
	2007		2008										2009												
	Apr	May	Jun	Jul	Aug	Sep	Oct	Nov	Dec	Jan	Feb	Mar	Apr	May	Jun	Jul	Aug	Sep	Oct	Nov	Dec	Jan	Feb	Mar	
Arts Ths	20	18	18	11	23	15	14	13	7	13	16														
Bio. Scs	40	60	45	57	72	62	60	75	39	78	57														
CI Scs	26	2	12	10	18	7	14	20	13	10	14														
Ch/ Pods	4	10	46	119	118	38	36	25	4	6	5														
Dietitians	13	20	62	72	67	30	34	24	7	13	8														
ODPs	56	25	84	33	83	149	119	163	17	39	19														
OTs	25	17	10	212	379	175	224	38	36	59	62														
Orths	0	0	3	15	14	3	5	0	0	0	1														
Paras	48	75	66	52	99	68	85	103	58	112	52														
Physios	71	41	130	543	605	197	196	169	54	67	100														
Pr/Orths	0	0	0	0	1	0	18	8	2	4	0														
Rads	8	24	193	381	251	76	88	32	10	11	15														
SLTs	16	20	35	48	151	93	106	75	16	24	26														
TOTAL	327	312	704	1,553	1,881	913	999	745	263	436	375														

2005/6	2006/7	2007/8	2008/9
FYE	FYE	FYE	YTD
234	184	168	0
912	690	645	0
155	145	146	0
399	341	411	0
367	331	350	0
754	668	787	0
1,544	1,327	1,237	0
34	41	41	0
1,247	807	818	0
2,051	2,120	2,173	0
46	32	33	0
1,008	1,051	1,089	0
746	582	610	0
9,497	8,319	8,508	0



	2007			2008								2009												
	Apr	May	Jun	Jul	Aug	Sep	Oct	Nov	Dec	Jan	Feb	Mar	Apr	May	Jun	Jul	Aug	Sep	Oct	Nov	Dec	Jan	Feb	Mar
Renewal Notices Sent	0	14,510	16,704	0	51,782	242	0	0	25,556	0	2,492													
Final Notices Sent	0	0	0	4,101	4,622	0	9,339	5,605	0	10,592	0													
TOTAL	0	14,510	16,704	4,101	56,404	242	9,339	5,605	25,556	10,592	2,492													
Registrants Lapsed	0	0	0	0	0	894	1,291	0	4,234	0	2,466													

2005/6 FYE	2006/7 FYE	2007/8 FYE	2008/9 YTD
142,363	27,711	111,286	0
36,261	25,909	34,259	0
178,624	53,620	145,545	0
9,448	5,388	8,885	0

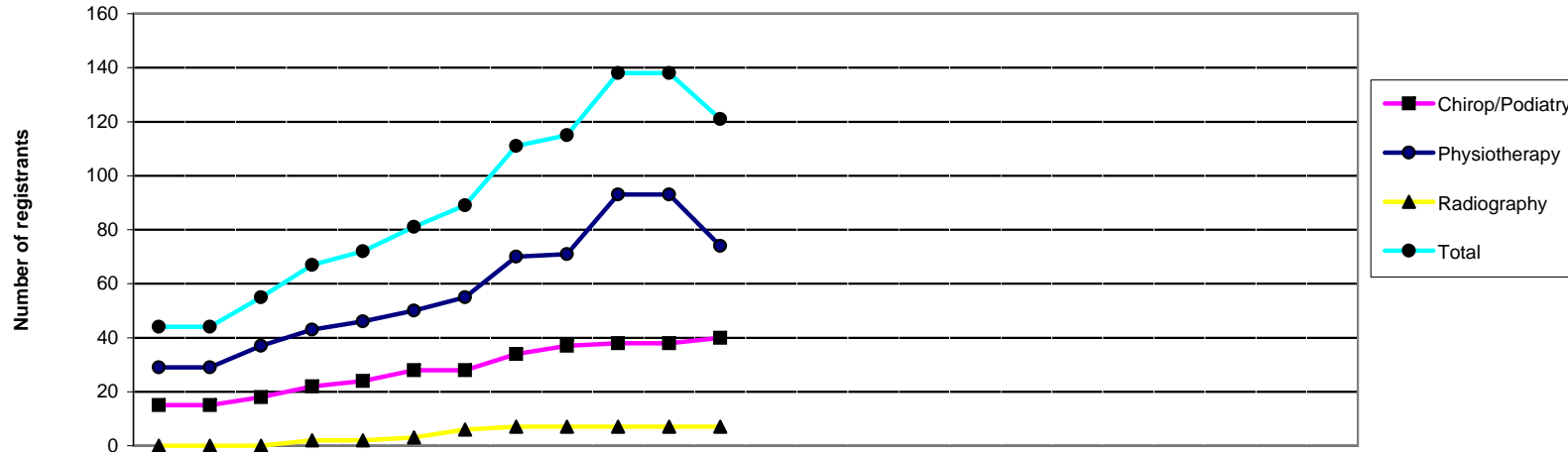


	2007			2008								2009													
	Apr	May	Jun	Jul	Aug	Sep	Oct	Nov	Dec	Jan	Feb	Mar	Apr	May	Jun	Jul	Aug	Sep	Oct	Nov	Dec	Jan	Feb	Mar	
G/pting	0	0	0	0	0	0	0	0	0	0	0	0													
Intern	251	237	201	228	161	167	148	220	99	229	177														
UK	327	312	704	1,553	1,881	913	999	745	263	436	375														
Total	578	549	905	1,781	2,042	1,080	1,147	965	362	665	552														

												2005/6	2006/7	2007/8	2008/9
												FYE	FYE	FYE	YTD
												2,479	20	0	0
												4,626	3,504	2,118	0
												9,497	8,319	8,508	0
												16,602	11,843	10,626	0

Health Professions Council

Number of registrants with supplementary prescribing rights 2007-9



	2007			2008									2009												
	Apr	May	Jun	Jul	Aug	Sep	Oct	Nov	Dec	Jan	Feb	Mar	Apr	May	Jun	Jul	Aug	Sep	Oct	Nov	Dec	Jan	Feb	Mar	
Chiropr/Podiatry	15	15	18	22	24	28	28	34	37	38	38	40													
Physiotherapy	29	29	37	43	46	50	55	70	71	93	93	74													
Radiography	0	0	0	2	2	3	6	7	7	7	7	7													
Total	44	44	55	67	72	81	89	111	115	138	138	121													

2006/7	2007/8	2008/9
FYE	FYE	YTD
15	40	
28		
0	7	
43	47	