

Council, 24 May 2017

Education Report

Executive summary and recommendations

Introduction

This report provides the Council with an update into the work of the Education Directorate in April 2017. Areas from the report to highlight are as follows:

- The number of approval cases already scheduled in this new financial year (2017-18) is unusually high compared to forecast (50 scheduled: 60 budget). The visit schedule is virtually fixed for quarters one and two and it has eleven more visits than forecast; a variance of +37%. If this trend continues into quarters three and four, there is a possibility that the year-end figures will be 15-30% higher than forecast.
- The Directorate has seen external stakeholder work in the area of higher and degree apprenticeships plateau in recent months, with our established connections allowing us to focus our time and efforts more effectively. This has created some opportunities for stakeholder work in other areas relevant to our future work.

Decision

The Council is asked to discuss the Education report

Appendices

Appendix 1 Education Narrative Report

Appendix 2 Education Management Information Pack

Date of paper

15 May 2017

Education Directorate – Management Commentary

The following provides an update about the work of the Education directorate in April 2017.

1. Approval process

- There were seven approval visits in April 2017 against a budgeted forecast of seven. In total we have 50 approval visits scheduled against a budgeted forecast of 60 in the 2017-18 financial year. This means that 85% of the budgeted forecast for the entire year is already scheduled, which is unprecedented for this time in the financial year. Five months of the financial year (42%) is still open for scheduling and this includes quarter four which is typically our second busiest quarter.
- Given this unusual position, a reforecast of the entire financial year has been undertaken. This now estimates 71 approval visits by year end compared to the original budgeted forecast of 60; an increase of 11 and variance of 18%.
- The approval visit schedule for the current 2016-17 academic year is currently at its peak period. There are now 61 approval visits scheduled within the 2016-17 academic year, which is an increase of 6 (11%) on the previous academic year (2015-16).
- The profession profile in the current 2016-17 academic year remains much more mixed than previous academic years. Programmes for biomedical scientists, paramedics, operating department practitioner, physiotherapist and practitioner psychologist programmes all have a noticeable presence.
- The reason for programmes being visited in the 2016-17 academic year is strongly in favour of new programmes. 60% of programmes to be visited are new proposals, with the remaining 40% to existing programmes due to significant change. The reasons behind both new proposals and changes to exiting provision remain very diverse.

2. Annual monitoring process

- There were 64 new annual monitoring submissions (40 audits and 24 declarations) received in April 2017, against a budgeted forecast of 55 (31 audits and 24 declarations). This increase of 9 submissions (16%) against forecast is mainly due to a number of late submissions from the previous month.
- There were two annual monitoring assessment days in April 2017, against a budgeted forecast of two. There were six audit submissions referred for consideration by correspondence in April 2017, against a budgeted forecast of one.

- On 30 April 2017, there were 276 active annual monitoring cases. This is just seven less than the previous month (2%). As there was no Education and Training Panel (ETP) meeting in April 2017 these figures distort the actual progression and completion of cases. Approximately 40% of these active cases are awaiting the next ETP meeting for a formal decision and case closure.
- The annual monitoring process for the current 2016-17 academic year is coming towards the end of its peak period. Activities were primarily concentrated over the six month period - December 2016 to May 2017. The activities transcend two financial years (2016-17 and 2017-18).

3. Major change process

- There were 18 new notifications in April 2017, against a budgeted forecast of 31. This is a decrease of 13 notifications against forecast (42%). There are no obvious reasons for this difference between forecast and actuals.
- There were 13 notifications referred to the full major change process in April 2017, against a budgeted forecast of 23. This is a decrease of 10 submissions against forecast (43%) and a direct consequent of the lower number of notifications. Approximately 25% of change notifications were channelled into the approval or annual monitoring for further consideration as expected still.
- On 30 April 2017, there were 68 active major change cases. This is just eleven more than the previous month (19%). Again, these figures are distorted by the lack of ETP meeting in April 2017. Approximately 45% of these active cases are awaiting the next ETP meeting for a formal decision and case closure.
- The major change process for the current 2016-17 academic year continues to be somewhat unpredictable. The number of notifications is generally higher than expected, but the increase is not steady; it fluctuates from month to month. The number of submissions is generally in line with the number expected, which means that a higher than expected number of notifications are not progressing into full major case submissions. This is a combination of channelling to approval or annual monitoring; cancellations and cases on hold.

4. Concerns process

- There were no new concern cases in April 2017, against a budgeted forecast of one.
- As of 30 April 2017, there were two active concerns; one at the submission stage and one at the investigations stage.
- The concerns process for the current 2016-17 academic year is broadly as expected in terms of overall numbers, however the number of concerns meeting our requirements for further investigation (60%) is higher than previous years.

5. Liaison with external stakeholders

- Members of the directorate met with the following external stakeholders in April 2017.
- Higher Education Funding Council for England (HEFCE)
The Director of Education, Chair of Education & Training Committee and the Chair of Council met with the Head of Quality Team, Regulation & Assurance for the first time. Topics discussed included our approach to quality assurance, HEFCE's new approach to quality assessment in England and Northern Ireland, HEFCE's role and intentions for funding allied health profession programmes and in England the UK Healthcare Education Advisory Committee (UKHEAC).
- NHS Education for Scotland (NES)
The Director of Education, Director of Policy & Standards, Director of Communications, Chief Executive and Chair of Council met with the executive team from NES. This is a regular and long standing meeting to keep each organisation up-to-date on developments in health and education in Scotland and professional regulation. Topics discussed included podiatric surgery, paramedic education, clinical scientist training and professional groups currently outside of statutory regulation.
- NHS Wales Shared Services Partnership (Directorate of Workforce, Education & Development)
The Director of Education met with the Director of Workforce, Education & Development. This is a regular (six monthly) meeting to keep each organisation up-to-date on developments in funding and commissioning in Wales and professional regulation. Topics discussed included social worker regulation in England, apprenticeships, physician associates, paramedic education and service delivery in Wales and the establishment of Health Education Wales, including the transfer of the Directorate of Workforce, Education & Development into it.
- Office of the Independent Adjudicator (England & Wales) (OIA)
The Director of Education and Head of Educational Development met with the Head of the Adjudication and Membership Manager for the first time. Topics discussed included our role as a regulator, the OIA's approach to and experience of student complaints, specifically around professional programmes, social worker regulation in England and our on-going relationship, including closer working and information sharing.

6. Systems

- An in house development process for our Microsoft Dynamics/SharePoint system has been agreed with IT. This will allow routine improvements without the need for external supplier involvement. The teams are working on the first series of changes since the system went live in 2015.
- Our Microsoft Dynamics/SharePoint system has been updated (part of a major project) to reflect recent legislative and policy changes linked to

medicine legislation (e.g. use by orthoptists of exemptions, renaming of local anaesthetics and prescription only medicine).

7. Employees

- Two employees resigned in April 2017; the PA to the Director (Liz Johnson) and an Education Officer (Alex Urquhart). Alex has moved internally to the Communications Department and Liz has decided not to return after her maternity leave. Both positions were filled immediately by members of the Department who were on fixed term contracts (Bernadette Wilby, PA and Niall Gooch, Education Officer). This has left a vacant Education Officer role for three months as Amal Hussein is on sabbatical. A mixture of temporary administrative agency resource and overtime will be used over this period.

Education Directorate Management Information Pack

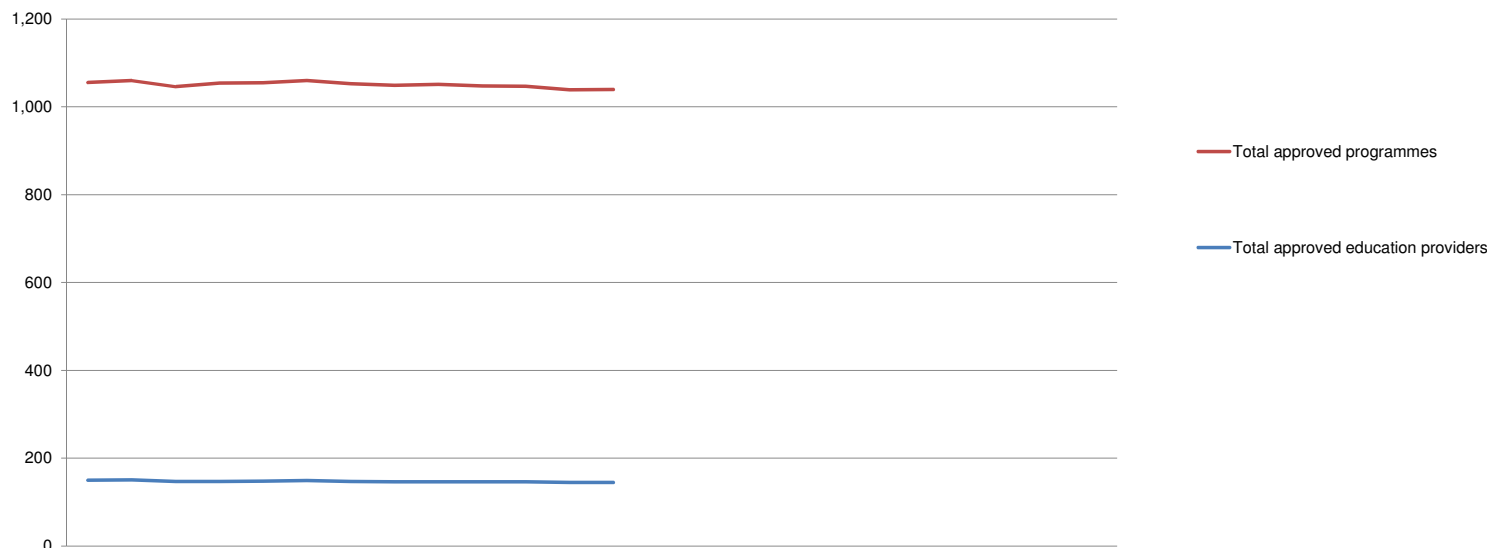
**Abigail Gorringe
Director of Education**

Activity in April 2017

Contents

| | | |
|------------|--|---------|
| 1) | Number of approved programmes, by profession, April 2016 – March 2018 | Page 9 |
| 2) | Overview of approval visits, April 2016 – March 2018 | Page 10 |
| 3) | Reasons for approval visits, April 2016 – March 2018 | Page 11 |
| 4) | Approval visits, by profession, April 2016 – March 2018 | Page 12 |
| 5) | Overview of annual monitoring audit submissions, April 2016 – March 2018 | Page 13 |
| 6) | Overview of annual monitoring declarations, April 2016 – March 2018 | Page 14 |
| 7) | Overview of major change submissions, April 2016 – March 2018 | Page 15 |
| 8) | Overview of concerns about approved programmes, April 2016 – March 2018 | Page 16 |
| 9) | Overview of workload, Number of active cases, April 2016 – March 2018 | Page 17 |
| 10) | Overview of workload, Number of resolved cases, April 2016 – March 2018 | Page 18 |
| 11) | Overview of workload, Number of cancelled cases, April 2016 – March 2018 | Page 19 |

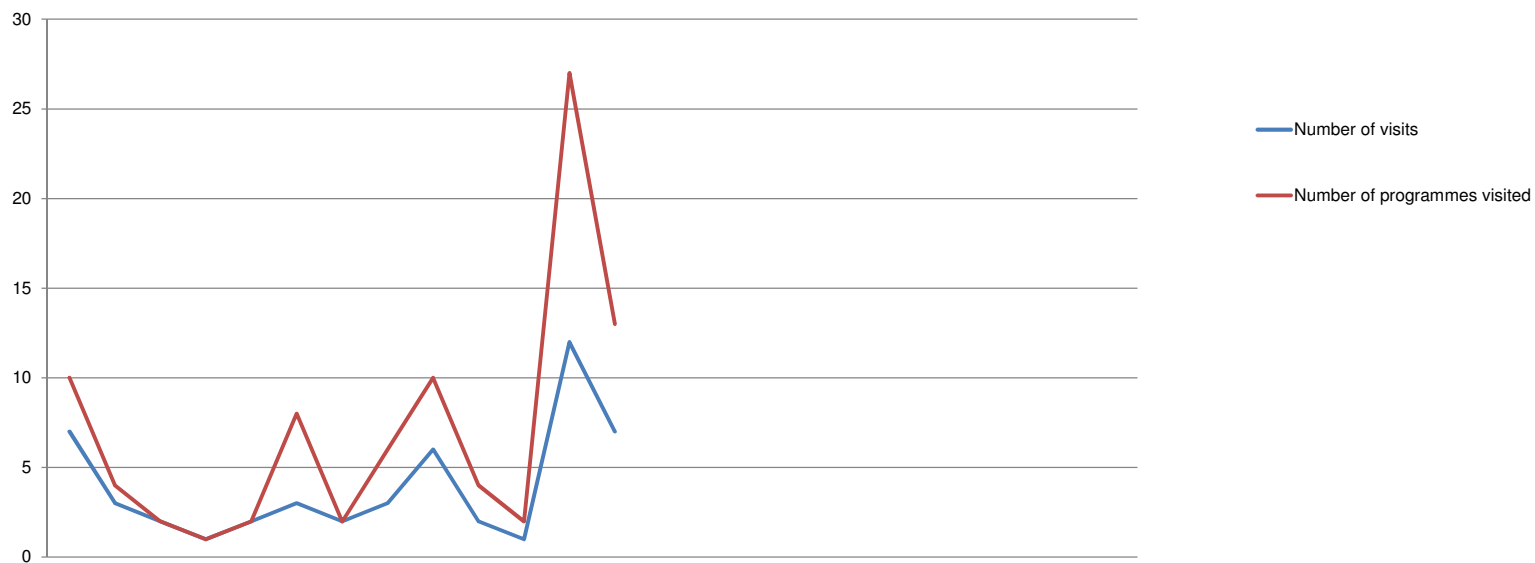
Number of approved programmes, by profession April 2016 - March 2018



| Profession/entitlement | 2016 | | | | | | | | | | | | 2017 | | | | | | | | | | | | 2018 | | | | | | | | | | | | | | | | | | | | |
|--|-------|-------|-------|-------|-------|-------|-------|-------|-------|-------|-------|-------|-------|-------|-------|-------|-------|-------|-------|-------|-------|-------|-------|-------|-------|-------|-------|-------|-------|-------|-------|-------|-------|-------|-------|-------|-------|-------|-------|-------|-------|-------|-------|-----|-----|
| | Apr | May | Jun | Jul | Aug | Sep | Oct | Nov | Dec | Jan | Feb | Mar | Apr | May | Jun | Jul | Aug | Sep | Oct | Nov | Dec | Jan | Feb | Mar | Apr | May | Jun | Jul | Aug | Sep | Oct | Nov | Dec | Jan | Feb | Mar | | | | | | | | | |
| Arts therapists | 31 | 31 | 30 | 30 | 29 | 29 | 29 | 29 | 28 | 28 | 28 | 28 | 28 | 28 | 28 | 28 | 28 | 28 | 28 | 28 | 28 | 28 | 28 | 28 | 28 | 28 | 28 | 28 | 28 | 28 | 28 | 28 | 28 | 28 | 28 | 28 | 28 | 28 | 28 | 28 | 28 | | | | |
| Biomedical scientists | 65 | 65 | 63 | 63 | 62 | 62 | 62 | 62 | 62 | 62 | 62 | 60 | 60 | 60 | 60 | 60 | 60 | 60 | 60 | 60 | 60 | 60 | 60 | 60 | 60 | 60 | 60 | 60 | 60 | 60 | 60 | 60 | 60 | 60 | 60 | 60 | 60 | 60 | 60 | 60 | 60 | 60 | | | |
| Chiroprodists/ Podiatrists | 20 | 20 | 20 | 20 | 19 | 19 | 19 | 19 | 17 | 17 | 17 | 17 | 17 | 17 | 17 | 17 | 17 | 17 | 17 | 17 | 17 | 17 | 17 | 17 | 17 | 17 | 17 | 17 | 17 | 17 | 17 | 17 | 17 | 17 | 17 | 17 | 17 | 17 | 17 | 17 | 17 | 17 | | | |
| Clinical scientists | 3 | 3 | 3 | 3 | 3 | 3 | 3 | 3 | 3 | 3 | 3 | 3 | 3 | 3 | 3 | 3 | 3 | 3 | 3 | 3 | 3 | 3 | 3 | 3 | 3 | 3 | 3 | 3 | 3 | 3 | 3 | 3 | 3 | 3 | 3 | 3 | 3 | 3 | 3 | 3 | 3 | 3 | | | |
| Dietitians | 32 | 32 | 32 | 32 | 32 | 32 | 32 | 32 | 32 | 32 | 32 | 32 | 32 | 32 | 32 | 32 | 32 | 32 | 32 | 32 | 32 | 32 | 32 | 32 | 32 | 32 | 32 | 32 | 32 | 32 | 32 | 32 | 32 | 32 | 32 | 32 | 32 | 32 | 32 | 32 | 32 | 32 | | | |
| Hearing aid dispensers | 22 | 22 | 22 | 20 | 20 | 20 | 20 | 19 | 19 | 19 | 19 | 18 | 18 | 18 | 18 | 18 | 18 | 18 | 18 | 18 | 18 | 18 | 18 | 18 | 18 | 18 | 18 | 18 | 18 | 18 | 18 | 18 | 18 | 18 | 18 | 18 | 18 | 18 | 18 | 18 | 18 | 18 | | | |
| Occupational therapists | 70 | 71 | 71 | 71 | 70 | 70 | 69 | 69 | 68 | 68 | 67 | 68 | 68 | 68 | 68 | 68 | 68 | 68 | 68 | 68 | 68 | 68 | 68 | 68 | 68 | 68 | 68 | 68 | 68 | 68 | 68 | 68 | 68 | 68 | 68 | 68 | 68 | 68 | 68 | 68 | 68 | 68 | 68 | | |
| Operating Department Practitioners | 38 | 37 | 37 | 38 | 38 | 38 | 37 | 37 | 37 | 35 | 35 | 34 | 34 | 34 | 34 | 34 | 34 | 34 | 34 | 34 | 34 | 34 | 34 | 34 | 34 | 34 | 34 | 34 | 34 | 34 | 34 | 34 | 34 | 34 | 34 | 34 | 34 | 34 | 34 | 34 | 34 | 34 | | | |
| Orthoptists | 3 | 3 | 3 | 3 | 3 | 3 | 3 | 3 | 3 | 3 | 3 | 3 | 3 | 3 | 3 | 3 | 3 | 3 | 3 | 3 | 3 | 3 | 3 | 3 | 3 | 3 | 3 | 3 | 3 | 3 | 3 | 3 | 3 | 3 | 3 | 3 | 3 | 3 | 3 | 3 | 3 | 3 | | | |
| Paramedics | 77 | 77 | 75 | 76 | 77 | 78 | 75 | 74 | 77 | 77 | 76 | 73 | 73 | 73 | 73 | 73 | 73 | 73 | 73 | 73 | 73 | 73 | 73 | 73 | 73 | 73 | 73 | 73 | 73 | 73 | 73 | 73 | 73 | 73 | 73 | 73 | 73 | 73 | 73 | 73 | 73 | 73 | 73 | | |
| Physiotherapists | 71 | 70 | 70 | 70 | 71 | 71 | 71 | 71 | 72 | 72 | 71 | 71 | 72 | 72 | 71 | 71 | 72 | 72 | 71 | 71 | 72 | 72 | 71 | 71 | 72 | 72 | 71 | 71 | 72 | 72 | 71 | 71 | 72 | 72 | 71 | 71 | 72 | 72 | 71 | 71 | 72 | 72 | 71 | 71 | |
| Practitioner psychologists | 102 | 103 | 101 | 101 | 101 | 101 | 101 | 102 | 104 | 104 | 105 | 102 | 102 | 102 | 102 | 102 | 102 | 102 | 102 | 102 | 102 | 102 | 102 | 102 | 102 | 102 | 102 | 102 | 102 | 102 | 102 | 102 | 102 | 102 | 102 | 102 | 102 | 102 | 102 | 102 | 102 | 102 | 102 | 102 | |
| Prosthetists/Orthotists | 2 | 2 | 2 | 2 | 2 | 2 | 2 | 2 | 2 | 2 | 2 | 2 | 2 | 2 | 2 | 2 | 2 | 2 | 2 | 2 | 2 | 2 | 2 | 2 | 2 | 2 | 2 | 2 | 2 | 2 | 2 | 2 | 2 | 2 | 2 | 2 | 2 | 2 | 2 | 2 | 2 | 2 | 2 | | |
| Radiographers | 52 | 53 | 52 | 52 | 54 | 54 | 54 | 54 | 54 | 54 | 54 | 54 | 54 | 54 | 54 | 54 | 54 | 54 | 54 | 54 | 54 | 54 | 54 | 54 | 54 | 54 | 54 | 54 | 54 | 54 | 54 | 54 | 54 | 54 | 54 | 54 | 54 | 54 | 54 | 54 | 54 | 54 | 54 | | |
| Social workers in England | 242 | 243 | 242 | 250 | 251 | 253 | 253 | 252 | 249 | 252 | 252 | 252 | 252 | 252 | 252 | 252 | 252 | 252 | 252 | 252 | 252 | 252 | 252 | 252 | 252 | 252 | 252 | 252 | 252 | 252 | 252 | 252 | 252 | 252 | 252 | 252 | 252 | 252 | 252 | 252 | 252 | 252 | 252 | 252 | |
| Speech and language therapists | 34 | 34 | 34 | 34 | 34 | 34 | 33 | 33 | 33 | 33 | 33 | 34 | 34 | 34 | 34 | 34 | 34 | 34 | 34 | 34 | 34 | 34 | 34 | 34 | 34 | 34 | 34 | 34 | 34 | 34 | 34 | 34 | 34 | 34 | 34 | 34 | 34 | 34 | 34 | 34 | 34 | 34 | 34 | 34 | |
| Prescription only medicines - administration | 4 | 4 | 4 | 4 | 4 | 4 | 4 | 4 | 4 | 4 | 4 | 4 | 4 | 4 | 4 | 4 | 4 | 4 | 4 | 4 | 4 | 4 | 4 | 4 | 4 | 4 | 4 | 4 | 4 | 4 | 4 | 4 | 4 | 4 | 4 | 4 | 4 | 4 | 4 | 4 | 4 | 4 | 4 | 4 | |
| Prescription only medicines – sale / supply | 8 | 8 | 7 | 7 | 7 | 7 | 7 | 6 | 6 | 6 | 6 | 6 | 6 | 6 | 6 | 6 | 6 | 6 | 6 | 6 | 6 | 6 | 6 | 6 | 6 | 6 | 6 | 6 | 6 | 6 | 6 | 6 | 6 | 6 | 6 | 6 | 6 | 6 | 6 | 6 | 6 | 6 | 6 | 6 | |
| Supplementary prescribing | 53 | 52 | 52 | 52 | 52 | 52 | 52 | 52 | 52 | 52 | 52 | 51 | 51 | 51 | 51 | 51 | 51 | 51 | 51 | 51 | 51 | 51 | 51 | 51 | 51 | 51 | 51 | 51 | 51 | 51 | 51 | 51 | 51 | 51 | 51 | 51 | 51 | 51 | 51 | 51 | 51 | 51 | 51 | 51 | |
| Independent prescribing | 93 | 94 | 94 | 94 | 94 | 96 | 95 | 94 | 94 | 96 | 96 | 95 | 95 | 95 | 95 | 95 | 95 | 95 | 95 | 95 | 95 | 95 | 95 | 95 | 95 | 95 | 95 | 95 | 95 | 95 | 95 | 95 | 95 | 95 | 95 | 95 | 95 | 95 | 95 | 95 | 95 | 95 | 95 | 95 | |
| Orthoptists - medicine exemptions | | | | | | | | | | | | | | | | | | | | | | | | | | | | | | | | | | | | | | | | | | | | | |
| Approved mental health professionals | 34 | 36 | 32 | 32 | 32 | 32 | 32 | 32 | 32 | 32 | 32 | 32 | 32 | 32 | 32 | 32 | 32 | 32 | 32 | 32 | 32 | 32 | 32 | 32 | 32 | 32 | 32 | 32 | 32 | 32 | 32 | 32 | 32 | 32 | 32 | 32 | 32 | 32 | 32 | 32 | 32 | 32 | 32 | 32 | |
| Podiatric surgery | | | | | | | | | | | | | | | | | | | | | | | | | | | | | | | | | | | | | | | | | | | | | |
| Total approved programmes | 1,056 | 1,060 | 1,046 | 1,054 | 1,055 | 1,060 | 1,053 | 1,049 | 1,051 | 1,048 | 1,047 | 1,039 | 1,040 | 1,040 | 1,040 | 1,040 | 1,040 | 1,040 | 1,040 | 1,040 | 1,040 | 1,040 | 1,040 | 1,040 | 1,040 | 1,040 | 1,040 | 1,040 | 1,040 | 1,040 | 1,040 | 1,040 | 1,040 | 1,040 | 1,040 | 1,040 | 1,040 | 1,040 | 1,040 | 1,040 | 1,040 | 1,040 | 1,040 | | |
| Total approved education providers | 150 | 151 | 147 | 147 | 148 | 149 | 147 | 146 | 146 | 146 | 146 | 145 | 145 | 145 | 145 | 145 | 145 | 145 | 145 | 145 | 145 | 145 | 145 | 145 | 145 | 145 | 145 | 145 | 145 | 145 | 145 | 145 | 145 | 145 | 145 | 145 | 145 | 145 | 145 | 145 | 145 | 145 | 145 | 145 | 145 |

| 2011/12 | 2012/13 | 2013/14 | 2014/15 | 2015/16 | 2016/17 | 2017/18 |
|---------|---------|---------|---------|---------|---------|---------|
| FYE | FYE | FYE | FYE | FYE | FYE | YTD |
| 21 | 29 | 30 | 28 | 31 | 28 | 60 |
| 49 | 60 | 57 | 55 | 65 | 60 | 17 |
| 20 | 18 | 17 | 16 | 20 | 17 | 3 |
| 1 | 3 | 3 | 3 | 3 | 3 | 32 |
| 33 | 32 | 32 | 32 | 32 | 32 | 18 |
| 18 | 15 | 18 | 20 | 22 | 18 | 68 |
| 74 | 73 | 70 | 69 | 70 | 68 | 34 |
| 34 | 35 | 34 | 34 | 38 | 34 | 3 |
| 3 | 3 | 3 | 3 | 3 | 3 | 73 |
| 50 | 50 | 49 | 53 | 77 | 73 | 72 |
| 67 | 65 | 69 | 69 | 71 | 71 | 102 |
| 95 | 91 | 91 | 93 | 102 | 102 | 2 |
| 3 | 3 | 3 | 3 | 2 | 2 | 54 |
| 56 | 53 | 51 | 50 | 51 | 54 | 252 |
| | 231 | 223 | 221 | 242 | 252 | 34 |
| 32 | 31 | 30 | 31 | 34 | 34 | 4 |
| 2 | 4 | 4 | 4 | 4 | 4 | 6 |
| 9 | 9 | 10 | 9 | 8 | 6 | 51 |
| 77 | 77 | 62 | 59 | 53 | 51 | 95 |
| | | 86 | 89 | 93 | 95 | 32 |
| | | | | | | |
| | 27 | 26 | 26 | 34 | 32 | 32 |
| | | | | | | |
| 644 | 909 | 968 | 967 | 1,055 | 1,039 | 1,040 |
| 128 | 150 | 151 | 143 | 150 | 145 | 145 |

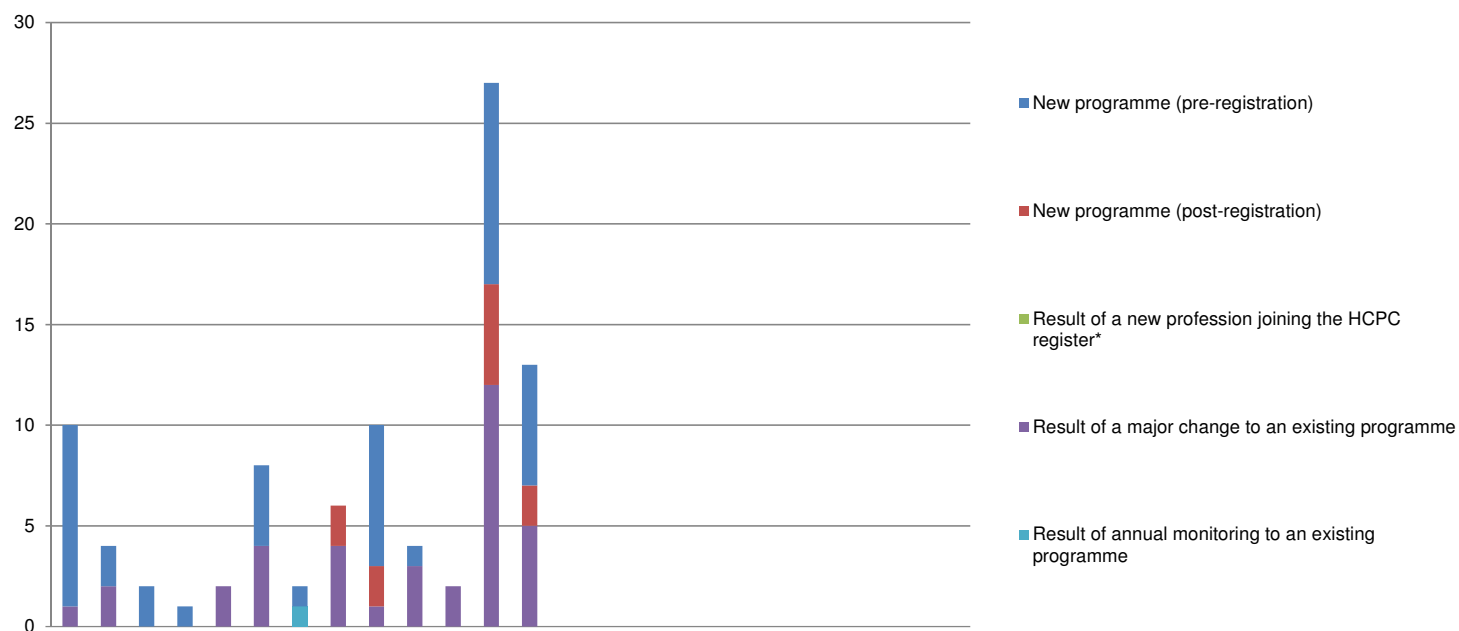
Overview of approval visits April 2016 - March 2018



| Overview of approval visits | 2016 | | | 2017 | | | | | | | | | 2018 | | | | | | | | | | | | |
|------------------------------|------|-----|-----|------|-----|-----|-----|-----|-----|-----|-----|-----|------|-----|-----|-----|-----|-----|-----|-----|-----|-----|-----|-----|--|
| | Apr | May | Jun | Jul | Aug | Sep | Oct | Nov | Dec | Jan | Feb | Mar | Apr | May | Jun | Jul | Aug | Sep | Oct | Nov | Dec | Jan | Feb | Mar | |
| Number of visits | 7 | 3 | 2 | 1 | 2 | 3 | 2 | 3 | 6 | 2 | 1 | 12 | 7 | | | | | | | | | | | | |
| Number of programmes visited | 10 | 4 | 2 | 1 | 2 | 8 | 2 | 6 | 10 | 4 | 2 | 27 | 13 | | | | | | | | | | | | |

| 2011/12 | 2012/13 | 2013/14 | 2014/15 | 2015/16 | 2016/17 | 2017/18 |
|---------|---------|---------|---------|---------|---------|---------|
| FYE | FYE | FYE | FYE | FYE | FYE | YTD |
| 59 | 56 | 66 | 69 | 59 | 44 | 7 |
| 112 | 103 | 170 | 132 | 89 | 78 | 13 |

Reasons for approval visits April 2016 - March 2018

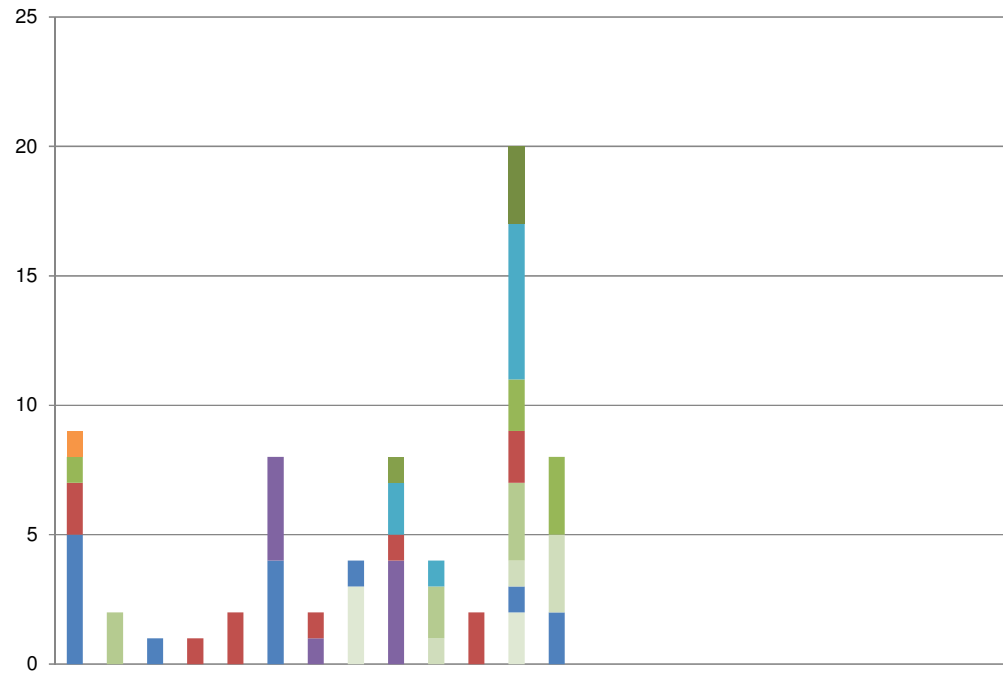


| Reason for programme visited | 2016 | | | 2017 | | | | | | | | | | 2018 | | | | | | | | | | |
|---|-----------|----------|----------|----------|----------|----------|----------|----------|-----------|----------|----------|-----------|-----------|------|-----|-----|-----|-----|-----|-----|-----|-----|-----|-----|
| | Apr | May | Jun | Jul | Aug | Sep | Oct | Nov | Dec | Jan | Feb | Mar | Apr | May | Jun | Jul | Aug | Sep | Oct | Nov | Dec | Jan | Feb | Mar |
| New programme (pre-registration) | 9 | 2 | 2 | 1 | 0 | 4 | 1 | 0 | 7 | 1 | 0 | 10 | 6 | | | | | | | | | | | |
| New programme (post-registration) | 0 | 0 | 0 | 0 | 0 | 0 | 0 | 2 | 2 | 0 | 0 | 5 | 2 | | | | | | | | | | | |
| Result of a new profession joining the HCPC register* | 0 | 0 | 0 | 0 | 0 | 0 | 0 | 0 | 0 | 0 | 0 | 0 | 0 | | | | | | | | | | | |
| Result of a major change to an existing programme | 1 | 2 | 0 | 0 | 2 | 4 | 0 | 4 | 1 | 3 | 2 | 12 | 5 | | | | | | | | | | | |
| Result of annual monitoring to an existing programme | 0 | 0 | 0 | 0 | 0 | 0 | 1 | 0 | 0 | 0 | 0 | 0 | 0 | | | | | | | | | | | |
| Total | 10 | 4 | 2 | 1 | 2 | 8 | 2 | 6 | 10 | 4 | 2 | 27 | 13 | | | | | | | | | | | |

| 2011/12 | 2012/13 | 2013/14 | 2014/15 | 2015/16 | 2016/17 | 2017/18 |
|------------|------------|------------|------------|-----------|-----------|-----------|
| FYE | FYE | FYE | FYE | FYE | FYE | YTD |
| 17 | 30 | 29 | 37 | 42 | 37 | 6 |
| 2 | 1 | 1 | 2 | 1 | 9 | 2 |
| 34 | 51 | 125 | 77 | 17 | 0 | 0 |
| 57 | 21 | 15 | 16 | 29 | 31 | 5 |
| 2 | 0 | 0 | 0 | 0 | 1 | 0 |
| 112 | 103 | 170 | 132 | 89 | 78 | 13 |

* Practitioner Psychologists, July 2009 - July 2012
 Hearing Aid Dispensers, April 2010 - July 2012
 Social workers in England, August 2012 - July 2015
 Approved Mental Health Professionals, September 2013 - July 2015

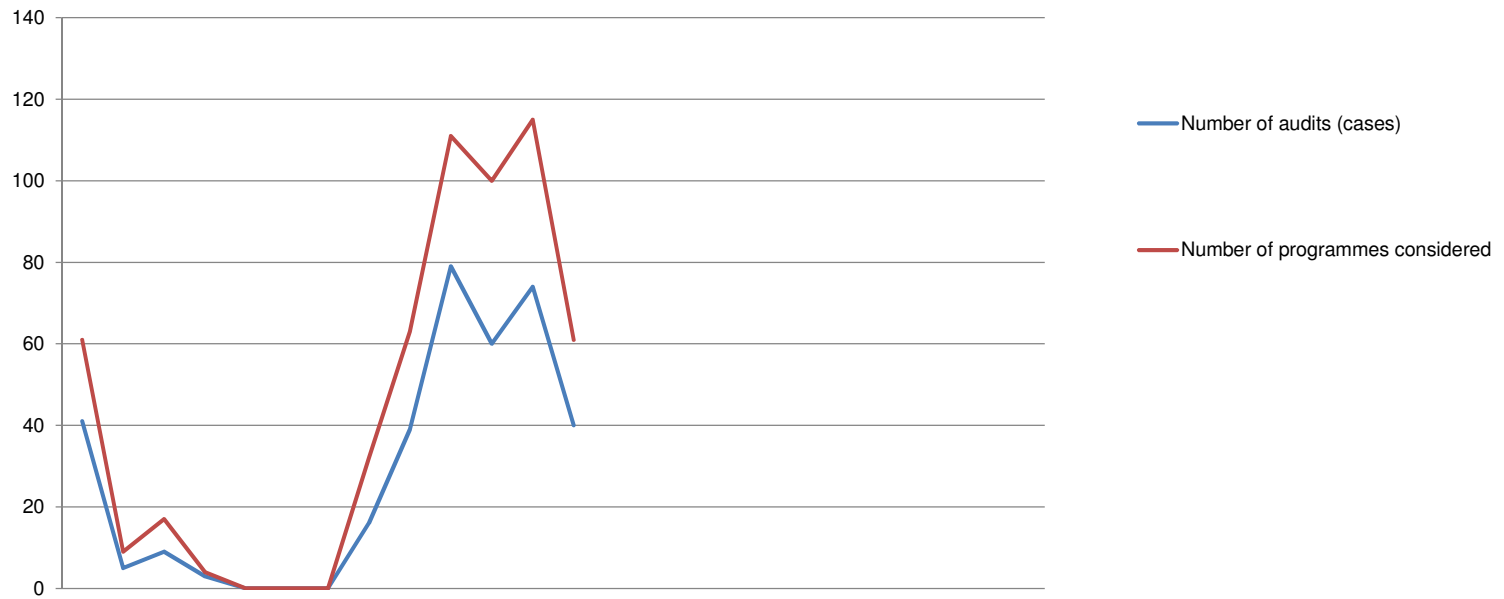
Approval visits, by profession, April 2016 - March 2018



| Profession/entitlement | 2016 | | | 2017 | | | | | | | | | | | | 2018 | | | | | | | | | | | |
|--|------|-----|-----|------|-----|-----|-----|-----|-----|-----|-----|-----|-----|-----|-----|------|-----|-----|-----|-----|-----|-----|-----|-----|--|--|--|
| | Apr | May | Jun | Jul | Aug | Sep | Oct | Nov | Dec | Jan | Feb | Mar | Apr | May | Jun | Jul | Aug | Sep | Oct | Nov | Dec | Jan | Feb | Mar | | | |
| Arts therapists | 0 | 0 | 0 | 0 | 0 | 0 | 0 | 0 | 0 | 0 | 0 | 0 | 0 | 0 | 0 | 0 | 0 | 0 | 0 | 0 | 0 | 0 | 0 | 0 | | | |
| Biomedical scientists | 1 | 0 | 0 | 0 | 0 | 0 | 0 | 0 | 0 | 0 | 0 | 0 | 0 | 0 | 0 | 0 | 0 | 0 | 0 | 0 | 0 | 0 | 0 | 0 | | | |
| Chiropodists/ Podiatrists | 0 | 0 | 0 | 0 | 0 | 0 | 0 | 0 | 0 | 0 | 0 | 0 | 0 | 0 | 0 | 0 | 0 | 0 | 0 | 0 | 0 | 0 | 3 | 0 | | | |
| Clinical scientists | 0 | 0 | 0 | 0 | 0 | 0 | 0 | 0 | 0 | 0 | 0 | 0 | 0 | 0 | 0 | 0 | 0 | 0 | 0 | 0 | 0 | 0 | 0 | 0 | | | |
| Dietitians | 0 | 0 | 0 | 0 | 0 | 0 | 0 | 0 | 0 | 0 | 1 | 0 | 0 | 0 | 0 | 0 | 0 | 0 | 0 | 0 | 0 | 0 | 0 | 0 | | | |
| Hearing aid dispensers | 0 | 0 | 0 | 0 | 0 | 0 | 0 | 0 | 0 | 0 | 0 | 0 | 0 | 0 | 0 | 0 | 0 | 0 | 0 | 0 | 0 | 0 | 0 | 0 | | | |
| Occupational therapists | 0 | 0 | 0 | 0 | 0 | 0 | 0 | 0 | 0 | 2 | 1 | 0 | 6 | 0 | 0 | 0 | 0 | 0 | 0 | 0 | 0 | 0 | 0 | 0 | | | |
| Operating Department Practitioners | 1 | 0 | 0 | 0 | 0 | 0 | 0 | 0 | 0 | 0 | 0 | 0 | 2 | 3 | 0 | 0 | 0 | 0 | 0 | 0 | 0 | 0 | 0 | 0 | | | |
| Orthoptists | 0 | 0 | 0 | 0 | 0 | 0 | 0 | 0 | 0 | 0 | 0 | 0 | 0 | 0 | 0 | 0 | 0 | 0 | 0 | 0 | 0 | 0 | 0 | 0 | | | |
| Paramedics | 2 | 0 | 0 | 1 | 2 | 0 | 1 | 0 | 1 | 0 | 1 | 2 | 2 | 0 | 0 | 0 | 0 | 0 | 0 | 0 | 0 | 0 | 0 | 0 | | | |
| Physiotherapists | 0 | 2 | 0 | 0 | 0 | 0 | 0 | 0 | 0 | 0 | 2 | 0 | 3 | 0 | 0 | 0 | 0 | 0 | 0 | 0 | 0 | 0 | 0 | 0 | | | |
| Practitioner psychologists | 0 | 0 | 0 | 0 | 0 | 4 | 1 | 0 | 4 | 0 | 0 | 0 | 0 | 0 | 0 | 0 | 0 | 0 | 0 | 0 | 0 | 0 | 0 | 0 | | | |
| Prosthetists/Orthotists | 0 | 0 | 0 | 0 | 0 | 0 | 0 | 0 | 0 | 0 | 0 | 0 | 0 | 0 | 0 | 0 | 0 | 0 | 0 | 0 | 0 | 0 | 0 | 0 | | | |
| Radiographers | 0 | 0 | 0 | 0 | 0 | 0 | 0 | 0 | 0 | 0 | 1 | 0 | 1 | 3 | 0 | 0 | 0 | 0 | 0 | 0 | 0 | 0 | 0 | 0 | | | |
| Social workers in England | 5 | 0 | 1 | 0 | 0 | 4 | 0 | 1 | 0 | 0 | 0 | 0 | 1 | 2 | 0 | 0 | 0 | 0 | 0 | 0 | 0 | 0 | 0 | 0 | | | |
| Speech and language therapists | 0 | 0 | 0 | 0 | 0 | 0 | 0 | 0 | 3 | 0 | 0 | 0 | 2 | 0 | 0 | 0 | 0 | 0 | 0 | 0 | 0 | 0 | 0 | 0 | | | |
| Prescription only medicines - administration | 0 | 0 | 0 | 0 | 0 | 0 | 0 | 0 | 0 | 0 | 0 | 0 | 1 | 0 | 0 | 0 | 0 | 0 | 0 | 0 | 0 | 0 | 0 | 0 | | | |
| Prescription only medicines - sale / supply | 0 | 0 | 0 | 0 | 0 | 0 | 0 | 0 | 0 | 0 | 0 | 0 | 1 | 0 | 0 | 0 | 0 | 0 | 0 | 0 | 0 | 0 | 0 | 0 | | | |
| Supplementary prescribing | 1 | 1 | 0 | 0 | 0 | 0 | 0 | 0 | 0 | 0 | 0 | 0 | 0 | 1 | 0 | 0 | 0 | 0 | 0 | 0 | 0 | 0 | 0 | 0 | | | |
| Independent prescribing | 0 | 1 | 1 | 0 | 0 | 0 | 0 | 2 | 0 | 0 | 0 | 2 | 4 | 0 | 0 | 0 | 0 | 0 | 0 | 0 | 0 | 0 | 0 | 0 | | | |
| Approved mental health professionals | 0 | 0 | 0 | 0 | 0 | 0 | 0 | 0 | 0 | 0 | 0 | 0 | 3 | 0 | 0 | 0 | 0 | 0 | 0 | 0 | 0 | 0 | 0 | 0 | | | |
| Podiatric surgery | 0 | 0 | 0 | 0 | 0 | 0 | 0 | 0 | 2 | 0 | 0 | 0 | 0 | 0 | 0 | 0 | 0 | 0 | 0 | 0 | 0 | 0 | 0 | 0 | | | |
| Total - pre-registration | 9 | 2 | 1 | 1 | 2 | 8 | 2 | 4 | 8 | 4 | 2 | 20 | 8 | 0 | 0 | 0 | 0 | 0 | 0 | 0 | 0 | 0 | 0 | 0 | | | |
| Total - post-registration | 1 | 2 | 1 | 0 | 0 | 0 | 0 | 2 | 2 | 0 | 0 | 7 | 5 | 0 | 0 | 0 | 0 | 0 | 0 | 0 | 0 | 0 | 0 | 0 | | | |
| Grand total | 10 | 4 | 2 | 1 | 2 | 8 | 2 | 6 | 10 | 4 | 2 | 27 | 13 | 0 | 0 | 0 | 0 | 0 | 0 | 0 | 0 | 0 | 0 | 0 | | | |

| 2015/16 | 2016/17 | 2017/18 |
|---------|---------|---------|
| FYE | FYE | YTD |
| 2 | 0 | 0 |
| 4 | 1 | 0 |
| 2 | 3 | 0 |
| 1 | 0 | 0 |
| 0 | 1 | 0 |
| 1 | 0 | 0 |
| 5 | 9 | 0 |
| 3 | 3 | 3 |
| 0 | 0 | 0 |
| 27 | 11 | 0 |
| 3 | 7 | 0 |
| 6 | 9 | 0 |
| 0 | 0 | 0 |
| 3 | 2 | 3 |
| 27 | 12 | 2 |
| 0 | 5 | 0 |
| 0 | 1 | 0 |
| 0 | 2 | 1 |
| 0 | 6 | 4 |
| 4 | 3 | 0 |
| 1 | 2 | 0 |
| 84 | 63 | 8 |
| 5 | 15 | 5 |
| 89 | 78 | 13 |

Overview of annual monitoring audit submissions, April 2016 - March 2018



| Type of submission | 2016 | | | 2017 | | | | | | | | | | | 2018 | | | | | | | | | | |
|---------------------------------|------|-----|-----|------|-----|-----|-----|-----|-----|-----|-----|-----|-----|-----|------|-----|-----|-----|-----|-----|-----|-----|-----|-----|--|
| | Apr | May | Jun | Jul | Aug | Sep | Oct | Nov | Dec | Jan | Feb | Mar | Apr | May | Jun | Jul | Aug | Sep | Oct | Nov | Dec | Jan | Feb | Mar | |
| Number of audits (cases) | 41 | 5 | 9 | 3 | 0 | 0 | 0 | 16 | 39 | 79 | 60 | 74 | 40 | | | | | | | | | | | | |
| Number of programmes considered | 61 | 9 | 17 | 4 | 0 | 0 | 0 | 32 | 63 | 111 | 100 | 115 | 61 | | | | | | | | | | | | |

| 2011/12 | 2012/13 | 2013/14 | 2014/15 | 2015/16 | 2016/17 | 2017/18 |
|---------|---------|---------|---------|---------|---------|---------|
| FYE | FYE | FYE | FYE | FYE | FYE | YTD |
| 163 | 199 | 222 | 209 | 223 | 326 | 40 |
| 206 | 282 | 268 | 286 | 317 | 512 | 61 |

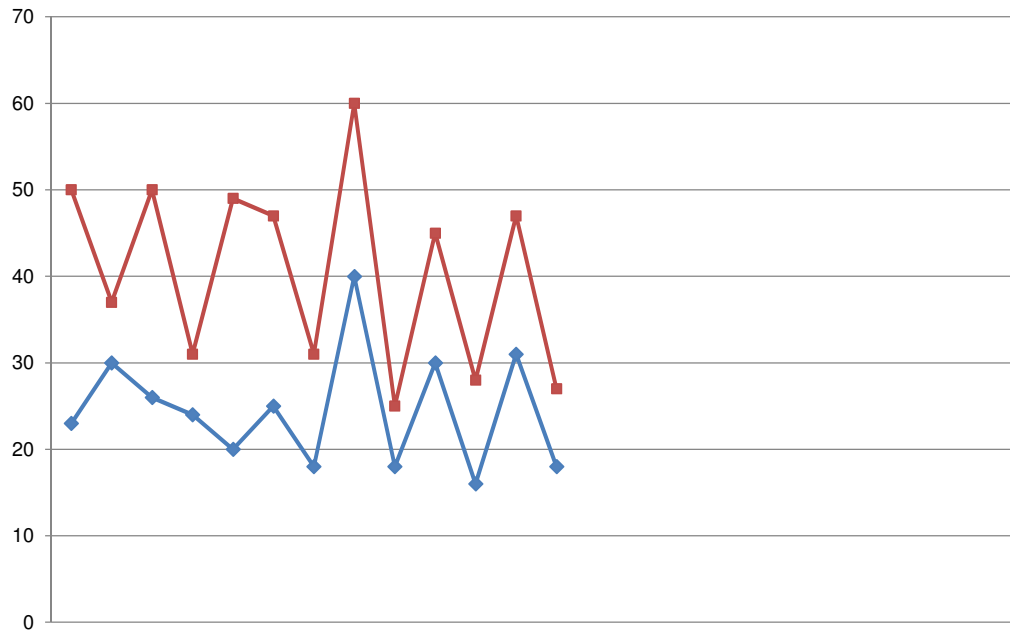
Overview of annual monitoring declarations, April 2016 - March 2018



| Type of submission | 2016 | | | 2017 | | | | | | | | | | | 2018 | | | | | | | | | |
|---------------------------------|------|-----|-----|------|-----|-----|-----|-----|-----|-----|-----|-----|-----|-----|------|-----|-----|-----|-----|-----|-----|-----|-----|-----|
| | Apr | May | Jun | Jul | Aug | Sep | Oct | Nov | Dec | Jan | Feb | Mar | Apr | May | Jun | Jul | Aug | Sep | Oct | Nov | Dec | Jan | Feb | Mar |
| Number of declarations (cases) | 37 | 7 | 21 | 5 | 0 | 0 | 15 | 36 | 32 | 40 | 53 | 45 | 24 | | | | | | | | | | | |
| Number of programmes considered | 39 | 7 | 28 | 6 | 0 | 0 | 19 | 48 | 46 | 60 | 74 | 68 | 39 | | | | | | | | | | | |

| 2011/12 | 2012/13 | 2013/14 | 2014/15 | 2015/16 | 2016/17 | 2017/18 |
|---------|---------|---------|---------|---------|---------|---------|
| FYE | FYE | FYE | FYE | FYE | FYE | YTD |
| 232 | 199 | 222 | 231 | 370 | 291 | 24 |
| 249 | 267 | 297 | 316 | 468 | 395 | 39 |

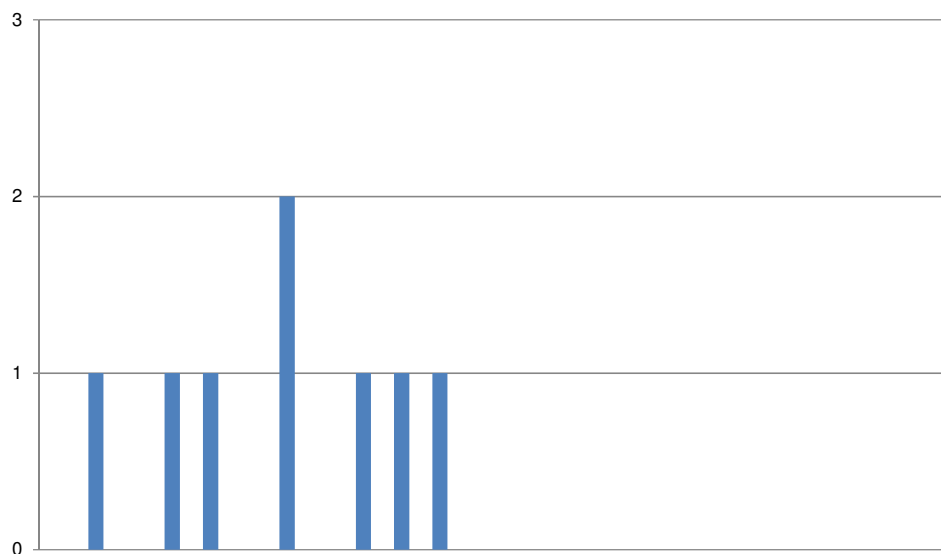
Overview of major change submissions, April 2016 - March 2018



◆ Number of notifications (cases)
 ■ Number of programmes considered

| Overview of notifications | 2016 | | | 2017 | | | | | | | | | 2018 | | |
|---------------------------------|------|-----|-----|------|-----|-----|-----|-----|-----|-----|-----|-----|------|-----|-----|
| | Apr | May | Jun | Jul | Aug | Sep | Oct | Nov | Dec | Jan | Feb | Mar | Apr | May | Jun |
| Number of notifications (cases) | 23 | 30 | 26 | 24 | 20 | 25 | 18 | 40 | 18 | 30 | 16 | 31 | 18 | | |
| Number of programmes considered | 50 | 37 | 50 | 31 | 49 | 47 | 31 | 60 | 25 | 45 | 28 | 47 | 27 | | |

| 2011/12 | 2012/13 | 2013/14 | 2014/15 | 2015/16 | 2016/17 | 2017/18 |
|---------|---------|---------|---------|---------|---------|---------|
| FYE | FYE | FYE | FYE | FYE | FYE | YTD |
| 174 | 146 | 157 | 200 | 277 | 301 | 18 |
| 311 | 266 | 250 | 398 | 430 | 500 | 27 |



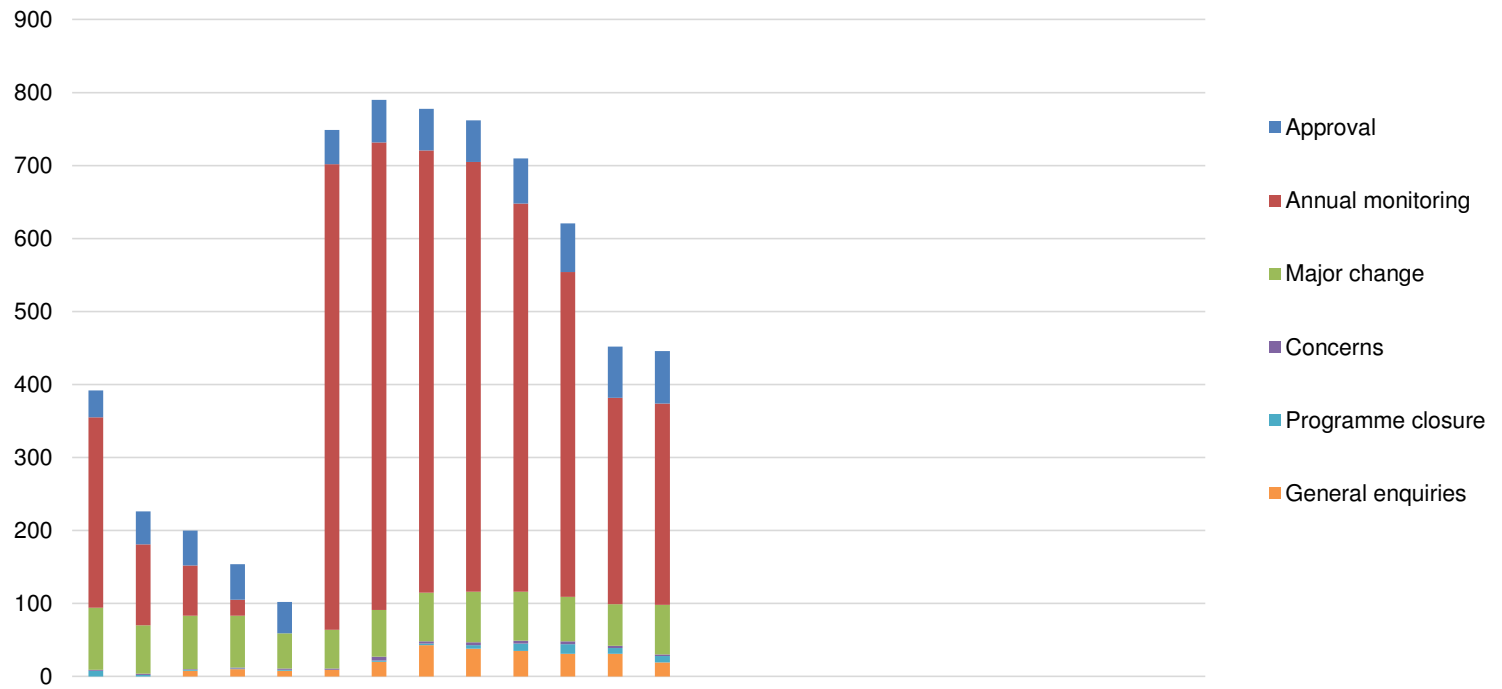
| | 2016 | | | 2017 | | | | | | | | | 2018 | | |
|-----------------------------|------|-----|-----|------|-----|-----|-----|-----|-----|-----|-----|-----|------|-----|-----|
| | Apr | May | Jun | Jul | Aug | Sep | Oct | Nov | Dec | Jan | Feb | Mar | Apr | May | Jun |
| Number of concerns received | 0 | 1 | 0 | 1 | 1 | 0 | 2 | 0 | 1 | 1 | 1 | 0 | 0 | 0 | 0 |

| | 2011/12 FYE | 2012/13 FYE | 2013/14 FYE | 2014/15 FYE | 2015/16 FYE | 2016/17 FYE | 2017/18 YTD |
|-----------------------------------|----------------|----------------|----------------|----------------|----------------|----------------|----------------|
| | 5 | 6 | 5 | 8 | 4 | 8 | 0 |
| Total number of approved progs | 644 | 909 | 968 | 967 | 1,055 | 1,039 | 1,040 |
| % programmes affected by concerns | 0.8% | 0.7% | 0.5% | 0.8% | 0.4% | 0.8% | 0.0% |

| Outcome of process | 2016 | | | 2017 | | | | | | | | | 2018 | | |
|---------------------------|------|-----|-----|------|-----|-----|-----|-----|-----|-----|-----|-----|------|-----|-----|
| | Apr | May | Jun | Jul | Aug | Sep | Oct | Nov | Dec | Jan | Feb | Mar | Apr | May | Jun |
| Directed visit | 0 | 0 | 0 | 0 | 0 | 0 | 0 | 0 | 0 | 0 | 0 | 0 | 0 | 0 | 0 |
| Approval process | 0 | 0 | 0 | 0 | 0 | 0 | 0 | 0 | 0 | 0 | 0 | 0 | 0 | 0 | 0 |
| Major change process | 0 | 0 | 0 | 0 | 0 | 0 | 0 | 0 | 0 | 0 | 0 | 0 | 0 | 0 | 0 |
| Annual monitoring process | 0 | 0 | 0 | 0 | 0 | 0 | 0 | 0 | 0 | 0 | 0 | 0 | 0 | 0 | 0 |
| Withdrawn | 0 | 0 | 0 | 0 | 0 | 0 | 0 | 0 | 0 | 1 | 0 | 0 | 0 | 0 | 0 |
| Unsubstantiated | 0 | 0 | 0 | 1 | 1 | 0 | 2 | 0 | 1 | 0 | 0 | 0 | 0 | 0 | 0 |
| Pending | 0 | 1 | 0 | 0 | 0 | 0 | 0 | 0 | 0 | 0 | 1 | 0 | 0 | 0 | 0 |

| | 2011/12 FYE | 2012/13 FYE | 2013/14 FYE | 2014/15 FYE | 2015/16 FYE | 2016/17 FYE | 2017/18 YTD |
|--|----------------|----------------|----------------|----------------|----------------|----------------|----------------|
| | 0 | 0 | 0 | 1 | 0 | 0 | 0 |
| | 1 | 0 | 1 | 0 | 1 | 0 | 0 |
| | 1 | 0 | 0 | 0 | 0 | 0 | 0 |
| | 0 | 0 | 0 | 0 | 0 | 0 | 0 |
| | 0 | 0 | 0 | 0 | 1 | 1 | 0 |
| | 3 | 6 | 4 | 7 | 2 | 5 | 0 |
| | 0 | 0 | 0 | 0 | 0 | 2 | 0 |

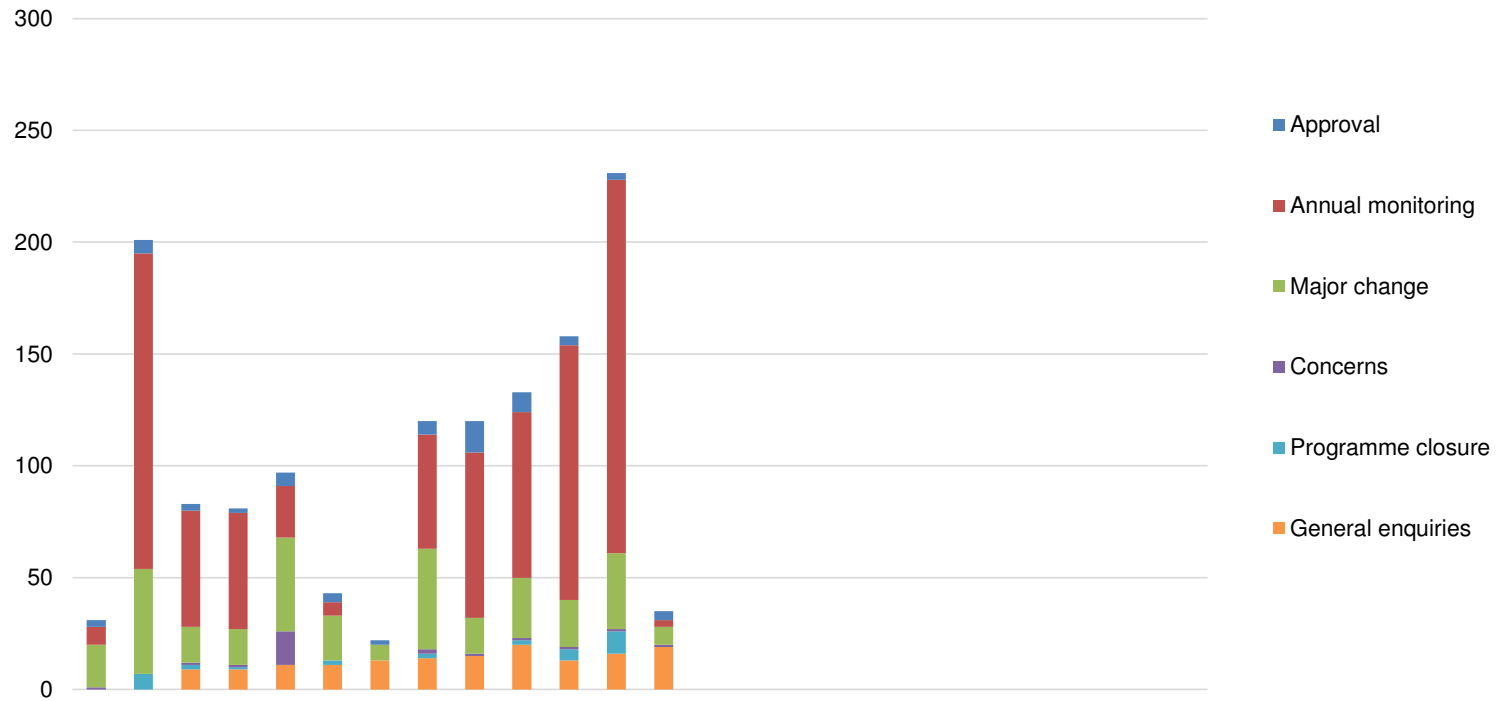
Overview of workload, Number of active cases, April 2016 - March 2018



| Work area | 2016 | | | 2017 | | | | | | | | | | | | 2018 | | | | | | | | | |
|-------------------|------------|------------|------------|------------|------------|------------|------------|------------|------------|------------|------------|------------|------------|-----|-----|------|-----|-----|-----|-----|-----|-----|-----|-----|--|
| | Apr | May | Jun | Jul | Aug | Sep | Oct | Nov | Dec | Jan | Feb | Mar | Apr | May | Jun | Jul | Aug | Sep | Oct | Nov | Dec | Jan | Feb | Mar | |
| Approval | 37 | 45 | 48 | 49 | 43 | 47 | 58 | 57 | 57 | 62 | 67 | 70 | 72 | | | | | | | | | | | | |
| Annual monitoring | 261 | 111 | 69 | 22 | 0 | 638 | 641 | 606 | 589 | 532 | 445 | 283 | 276 | | | | | | | | | | | | |
| Major change | 85 | 66 | 73 | 71 | 48 | 53 | 64 | 67 | 69 | 67 | 61 | 57 | 68 | | | | | | | | | | | | |
| Concerns | 1 | 2 | 1 | 1 | 2 | 2 | 5 | 3 | 4 | 4 | 4 | 3 | 2 | | | | | | | | | | | | |
| Programme closure | 8 | 2 | 1 | 1 | 1 | 0 | 2 | 2 | 5 | 10 | 13 | 8 | 9 | | | | | | | | | | | | |
| General enquiries | | | 8 | 10 | 8 | 9 | 20 | 43 | 38 | 35 | 31 | 31 | 19 | | | | | | | | | | | | |
| Total | 392 | 226 | 200 | 154 | 102 | 749 | 790 | 778 | 762 | 710 | 621 | 452 | 446 | | | | | | | | | | | | |

| 2015/16 | 2016/17 | 2017/18 |
|------------|------------|------------|
| FYE | FYE | YTD |
| 34 | 70 | 72 |
| 264 | 283 | 276 |
| 69 | 57 | 68 |
| 2 | 3 | 2 |
| 4 | 8 | 9 |
| | 31 | 19 |
| 373 | 452 | 446 |

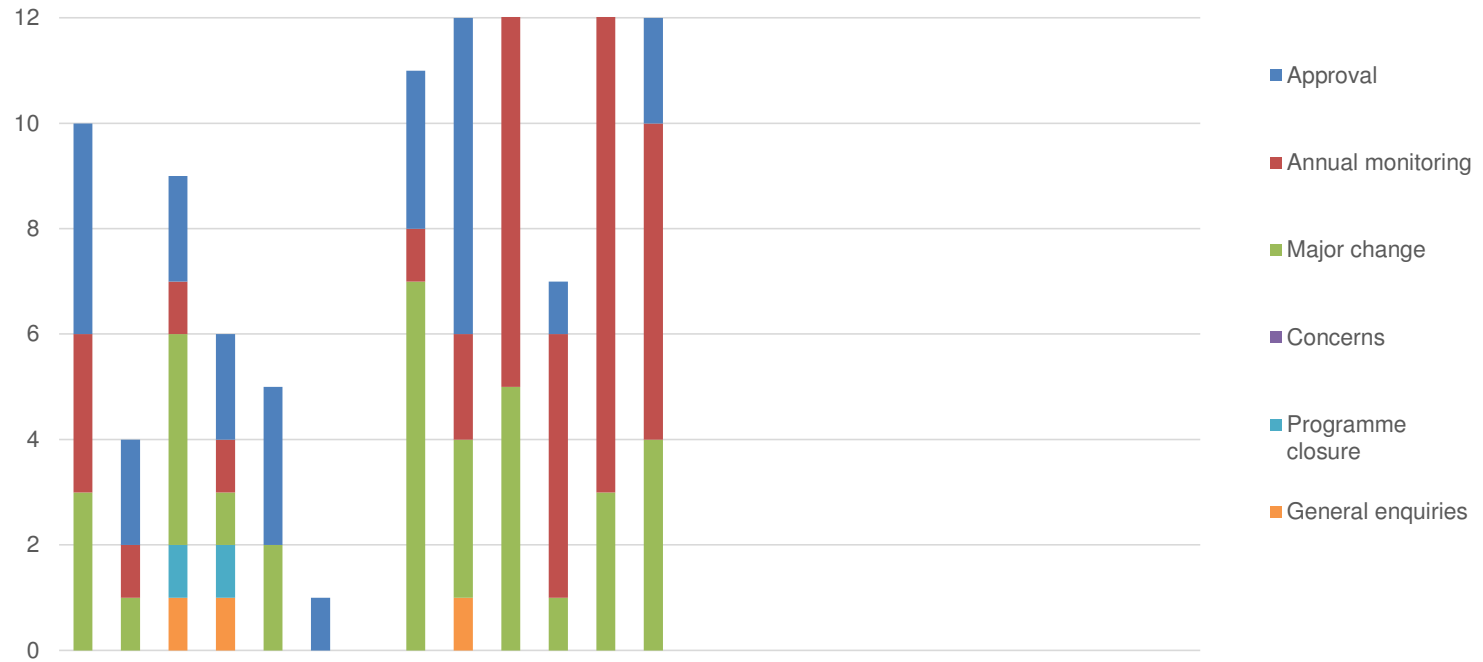
Overview of workload, Number of resolved cases, April 2016 - March 2018



| Work area | 2016 | | 2017 | | | | | | | | | | | | 2018 | | | | | | | | | | |
|-------------------|-----------|------------|-----------|-----------|-----------|-----------|-----------|------------|------------|------------|------------|------------|-----------|-----|------|-----|-----|-----|-----|-----|-----|-----|-----|-----|--|
| | Apr | May | Jun | Jul | Aug | Sep | Oct | Nov | Dec | Jan | Feb | Mar | Apr | May | Jun | Jul | Aug | Sep | Oct | Nov | Dec | Jan | Feb | Mar | |
| Approval | 3 | 6 | 3 | 2 | 6 | 4 | 2 | 6 | 14 | 9 | 4 | 3 | 4 | | | | | | | | | | | | |
| Annual monitoring | 8 | 141 | 52 | 52 | 23 | 6 | 0 | 51 | 74 | 74 | 114 | 167 | 3 | | | | | | | | | | | | |
| Major change | 19 | 47 | 16 | 16 | 42 | 20 | 7 | 45 | 16 | 27 | 21 | 34 | 8 | | | | | | | | | | | | |
| Concerns | 1 | 0 | 1 | 1 | 15 | 0 | 0 | 2 | 1 | 1 | 1 | 1 | 1 | | | | | | | | | | | | |
| Programme closure | 0 | 7 | 2 | 1 | 0 | 2 | 0 | 2 | 0 | 2 | 5 | 10 | 0 | | | | | | | | | | | | |
| General enquiries | | | 9 | 9 | 11 | 11 | 13 | 14 | 15 | 20 | 13 | 16 | 19 | | | | | | | | | | | | |
| Total | 31 | 201 | 83 | 81 | 97 | 43 | 22 | 120 | 120 | 133 | 158 | 231 | 35 | | | | | | | | | | | | |

| 2015/16 | 2016/17 | 2017/18 |
|---------|---------|---------|
| FYE | FYE | YTD |
| 133 | 62 | 4 |
| 928 | 762 | 3 |
| 306 | 310 | 8 |
| 9 | 24 | 1 |
| 38 | 31 | 0 |
| | 131 | 19 |
| 1,414 | 1,320 | 35 |

Overview of workload, Number of cancelled cases, April 2016 - March 2018



| Work area | 2016 | | 2017 | | | | | | | | | | | 2018 | | | | | | | | | | | |
|-------------------|-----------|----------|----------|----------|----------|----------|----------|-----------|-----------|-----------|----------|-----------|-----------|------|-----|-----|-----|-----|-----|-----|-----|-----|-----|-----|--|
| | Apr | May | Jun | Jul | Aug | Sep | Oct | Nov | Dec | Jan | Feb | Mar | Apr | May | Jun | Jul | Aug | Sep | Oct | Nov | Dec | Jan | Feb | Mar | |
| Approval | 4 | 2 | 2 | 2 | 3 | 1 | 0 | 3 | 6 | 2 | 1 | 1 | 2 | | | | | | | | | | | | |
| Annual monitoring | 3 | 1 | 1 | 1 | 0 | 0 | 0 | 1 | 2 | 8 | 5 | 10 | 6 | | | | | | | | | | | | |
| Major change | 3 | 1 | 4 | 1 | 2 | 0 | 0 | 7 | 3 | 5 | 1 | 3 | 4 | | | | | | | | | | | | |
| Concerns | 0 | 0 | 0 | 0 | 0 | 0 | 0 | 0 | 0 | 0 | 0 | 0 | 0 | | | | | | | | | | | | |
| Programme closure | 0 | 0 | 1 | 1 | 0 | 0 | 0 | 0 | 0 | 0 | 0 | 0 | 0 | | | | | | | | | | | | |
| General enquiries | | | 1 | 1 | 0 | 0 | 0 | 0 | 1 | 0 | 0 | 0 | 0 | | | | | | | | | | | | |
| Total | 10 | 4 | 9 | 6 | 5 | 1 | 0 | 11 | 12 | 15 | 7 | 14 | 12 | | | | | | | | | | | | |

| 2015/16 | 2016/17 | 2017/18 |
|-----------|-----------|-----------|
| FYE | FYE | YTD |
| 28 | 27 | 2 |
| 18 | 32 | 6 |
| 25 | 30 | 4 |
| 1 | 0 | 0 |
| 1 | 2 | 0 |
| | 3 | 0 |
| 73 | 94 | 12 |