

Council, 8 February 2017

Education Report

Executive summary and recommendations

Introduction

This report provides the Council with an update into the work of the Education Directorate in November and December 2016. Areas from the report to highlight are as follows:

- The number of approval cases continue to be lower than forecast in the current financial year, with annual monitoring and concerns cases broadly in line with forecast. The number of major change cases continues to be higher than forecast, but has levelled off slightly as activity was more in line with forecast in the last quarter.
- The number of approval cases scheduled for the first quarter of the next financial year (25) is significantly higher than the first quarter of this financial year (12). The schedules for the academic years 2015-16 and 2016-17 are broadly comparable, but the distribution of these visits are affecting the financial year comparisons. The profession profile and reasons for these visits remains very mixed, however is now evidence of the funding and commissioning changes to allied health profession provision in England beginning to impact the approval case numbers in the first quarter of the next financial year (April – June 2017).
- The Directorate continues to see an increase in external stakeholder work in the area of higher and degree apprenticeships. This involves formal engagement with three trailblazer groups (biomedical scientists; chiropodists and social workers) and initial (expressions of interest) work with seven professions and Health Education England and Skills for Care.

Decision

The Council is asked to discuss the Education report

Appendices

Appendix 1 Education Narrative Report

Appendix 2 Education Management Information Pack

Date of paper

23 January 2017

Education Directorate – Management Commentary

The following provides an update about the work of the Education directorate in November and December 2016.

1. Approval process

- There were ten approval visits in November and December 2016 against a budgeted forecast of ten. In total we have 46 approval visits scheduled against a budgeted forecast of 60 in the 2016-17 financial year. This is a decrease of 14 visits against forecast (or 23% lower than expected this year). There are 14 approval visits scheduled in the remainder of the 2016-17 financial year (January – March 2017) and given the pre-visit progression and liaison, it is unlikely that there will be significant change in these numbers at this stage.
- All five approvals cases previously reported as open from the 2015-16 academic year were closed in November and December 2016.
- There are now 55 active approval cases scheduled within the current 2016-17 academic year, (as increase of 2 from the data reported to the last Council meeting). Taking revisits (3) and resolved approval cases (5) into account, the total number of actual visits scheduled in the 2016-17 academic year is 55. This is broadly the same as the previous academic year (2015-16).
- The profession profile in the 2016-17 academic year remains more mixed than the last few academic years. Social worker programmes no longer dominate the schedule; however paramedic activity remains proportionately high. Dietitian, operating department practitioner, physiotherapist and practitioner psychologist programmes also have a more visible presence compared to recent academic years.
- The reason for programmes being visited in the 2016-17 academic year has tipped back in favour of new programmes. 52% of programmes to be visited are now new proposals, with the remaining 48% to existing programmes due to significant change. The reasons behind both new proposals and changes to exiting provision remain very diverse. The majority of approval cases are still linked to longer term developments (e.g. new provision at level six for operating department practitioners and paramedics; expansion of teaching partnership programme for social work) and routine changes (e.g. programme redesign; site relocations; changes to validating bodies). However, there are signs of the funding and commissioning changes for the allied health professions in England beginning to feature in the approval case numbers in the first quarter of the next financial year (April – June 2017).
- The standards for the use by orthoptists of exemptions to sell and supply medicines were published in November 2016, and simultaneously the

approval process opened to any new proposed programmes in this area. We have communicated these developments to relevant stakeholders, including existing pre-registration orthoptist education providers. To date, we have received no requests.

2. Annual monitoring process

- There were 123 new annual monitoring submissions (55 audits and 68 declarations) received in November and December 2016, against a budgeted forecast of 61 (35 audits and 26 declarations). This increase of 62 submissions (200%) against forecast is primarily due manual manipulations in our IT system to address the office closure over Christmas/New Year. In practice, the majority of submissions were received when expected.
- There was one annual monitoring assessment day in November and December 2016, against a budgeted forecast of one. There were six audit submissions referred for consideration by correspondence in November and December 2016, against a budgeted forecast of seven submissions.
- In total we have had 113 audits and 153 declarations in the 2016-17 financial year to date. In total we have had 4 assessment days and 31 correspondence submissions, against a budgeted forecast of 7 and 28 respectively. This is a decrease of three assessment days against forecast (or 43% lower than expected year to date) and an increase of three posts against forecast (or 11% higher than expected year to date).
- The annual monitoring process for the current 2016-17 academic year has entered its peak period. Activities are primarily concentrated over the six month period - December 2016 to May 2017 – and include ten assessment days. The activity in the 2016-17 financial year transcends two academic years (2015-16 and 2016-17).

3. Major change process

- There were 58 new notifications in November and December 2016 against a budgeted forecast of 47. In total we have had 224 new notifications scheduled against a budgeted forecast of 130 year to date. This is an increase of 94 notifications against forecast (or 72% higher than expected year to date).
- There were 39 notifications referred to the full major change process in November and December 2016 against a budgeted forecast of 35. Many of these submissions were novel and complex in nature, as they were associated with the expansion of social work teaching partnerships and development of apprenticeships. In total we had 162 major change submissions, against a budgeted forecast of 110 year to date. This is an increase of 52 submissions against forecast (or 47% higher than expected year to date).

4. Concerns process

- There was one new concern in November and December 2016, against a budgeted forecast of one. In total we have received six new concerns against a budgeted forecast of six year to date.
- As of 31 December 2016, there were four active concerns; two at the initial enquiry stage and two at the investigation stage.

5. Liaison with external stakeholders

- Members of the directorate met with the following external stakeholders in November and December 2016.
- Society of Chiropodists & Podiatrists (2 November)
The Head of Educational Development and Director of Policy and Standards met with members of the Society of Chiropodists & Podiatrists' College of Podiatry and Directorate of Podiatric Surgery to discuss podiatric surgery, and specifically the Society's intentions for qualifying training.
- QAA Professional Statutory Regulatory Body (PSRB) Forum (7 November)
The Head of Educational Development attended this forum. It is a regular (six monthly) forum for PSRBs across all sectors and professions involved in higher education quality assurance. The forum is organised by the Quality Assurance Agency and UK IPG (UK Inter-Professional Group). At this forum, there were presentations and updates from DfE, HEFCE, UUK and QAA on changes to higher education policy, including the teaching excellence framework, employability and the key information set/unistats.
- Skills for Care (21 November)
The Head of Educational Development met a number of individuals from Skills for Care and lead employers involved in the initial work (expression of interest stage) around developing standards and degrees apprenticeships for social workers. This meeting has resulted in a closer working relationship with the sector skills council, the lead education provider and membership of the trailblazer group.
- UK Healthcare Education Advisory Committee (UK HEAC) (25 November)
The Head of Educational Development attended this meeting. The UK HEAC is an advisory committee to the higher education funding councils in England, Scotland and Wales and constituted of UK higher education institutions delivering healthcare programmes. The HCPC was invited to join the committee with observer status in spring 2016, alongside other professional regulators, commissioners and government representatives. UK HEAC meets three times a year. At this meeting, topics discussed included healthcare funding reform for the nursing, midwifery and the allied health professions in England, the expansion of medical education in England, changes to pharmacy education across the UK, the teaching excellence framework and Brexit implications for academic health workforce.
- College of Occupational Therapists (7 December)
The Head of Educational Development met with the Associate Director at the College (with responsibility for education and research) to discuss current

and future plans around developing standards and degrees apprenticeships for occupational therapists. This meeting has resulted in a closer working relationship with the proposed trailblazer group and professional body.

6. Partners

- Three one day refresher visitor training sessions took place in November and December 2016. This completed the five planned refresher sessions for this financial year and reached 100 visitors.
- Work is currently underway for the final training session in this financial year. A two day new visitor training session will take place in February 2017, for recently recruited paramedic and educational psychologist visitors. This will ensure suitable numbers of visitors are maintained in these professions/modalities.

7. Systems

- Work has begun, with colleagues in IT, to agree an in house development process to allow routine improvements to our Microsoft Dynamics/SharePoint system. This was a long term benefit of the new system, with the goal to reduce reliance on external suppliers and instead exploit in-house expertise and experience for routine and low risk changes.
- Work is on-going, as part of a major project, to ensure our systems are updated to reflect recent legislative and policy changes linked to medicine legislation (e.g. use by orthoptists of exemptions, renaming of local anaesthetics and prescription).

8. Employees

- There are no changes or vacancies to report. The Department operated within the budgeted headcount (19) during November and December 2016.
- Many employees have engaged with learning and development opportunities in this period.

Education Directorate Management Information Pack

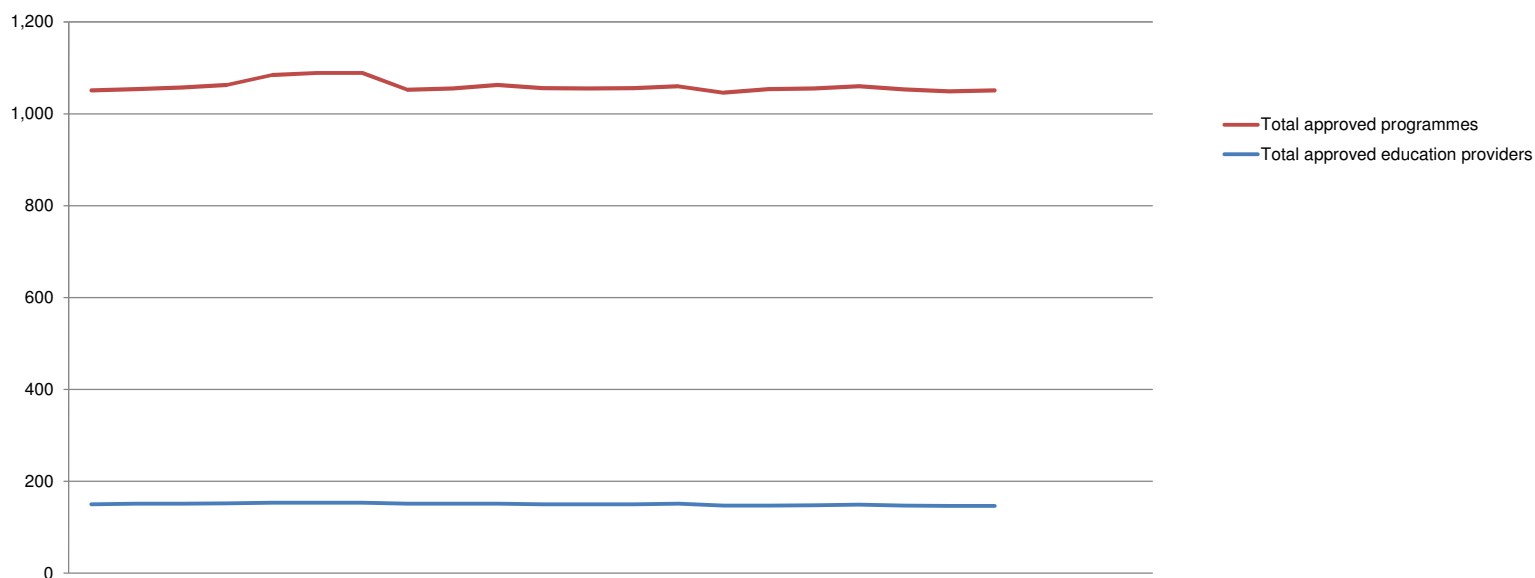
Abigail Gorringe
Director of Education

Activity in November and December 2016

Contents

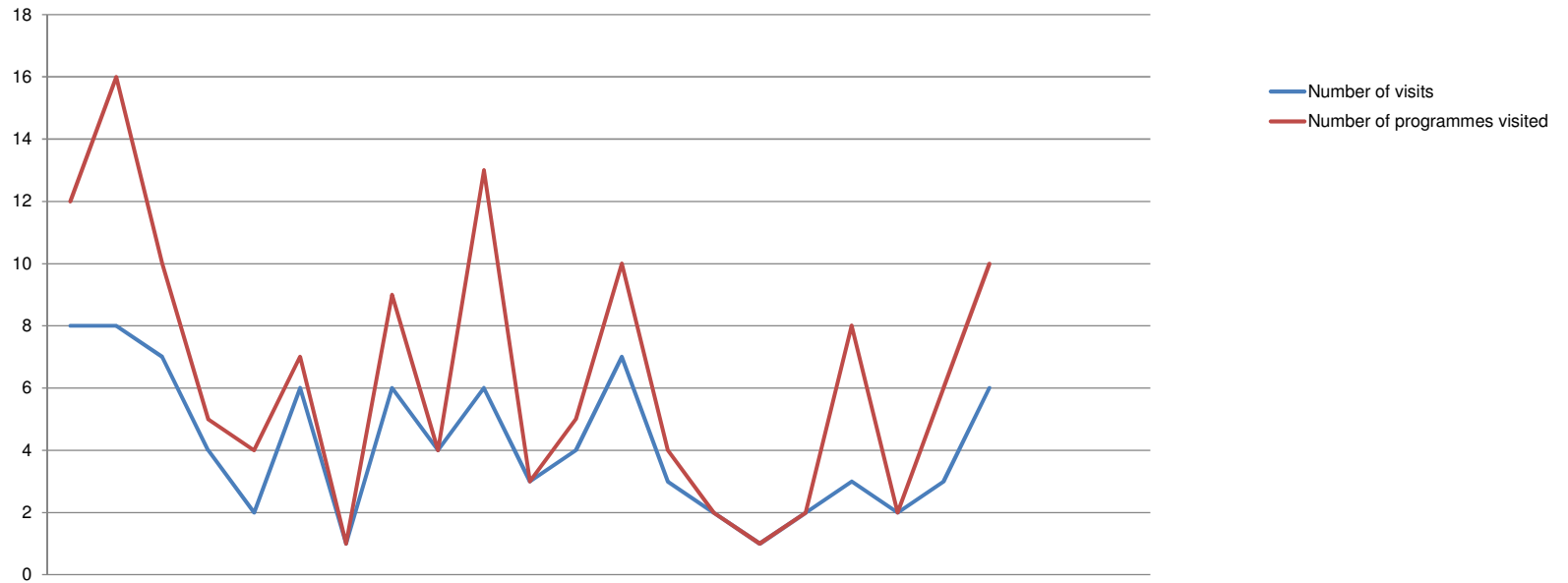
| | | |
|------------|--|---------|
| 1) | Number of approved programmes, by profession, April 2015 – March 2017 | Page 9 |
| 2) | Overview of approval visits, April 2015 – March 2017 | Page 10 |
| 3) | Reasons for approval visits, April 2015 – March 2017 | Page 11 |
| 4) | Approval visits, by profession, April 2015 – March 2017 | Page 12 |
| 5) | Overview of annual monitoring audit submissions, April 2015 – March 2017 | Page 13 |
| 6) | Overview of annual monitoring declarations, April 2015 – March 2017 | Page 14 |
| 7) | Overview of major change submissions, April 2015 – March 2017 | Page 15 |
| 8) | Overview of concerns about approved programmes, April 2015 – March 2017 | Page 16 |
| 9) | Overview of workload, Number of active cases, April 2015 – March 2017 | Page 17 |
| 10) | Overview of workload, Number of resolved cases, April 2015 – March 2017 | Page 18 |
| 11) | Overview of workload, Number of cancelled cases, April 2015 – March 2017 | Page 19 |

Number of approved programmes, by profession April 2015 - March 2017



| Profession/entitlement | 2015 | | | 2016 | | | | | | | | | 2017 | | | | | | | | | | | | |
|--|--------------|--------------|--------------|--------------|--------------|--------------|--------------|--------------|--------------|--------------|--------------|--------------|--------------|--------------|--------------|--------------|--------------|--------------|--------------|--------------|-------------|-----|-----|-----|--|
| | Apr | May | Jun | Jul | Aug | Sep | Oct | Nov | Dec | Jan | Feb | Mar | Apr | May | Jun | Jul | Aug | Sep | Oct | Nov | Dec | Jan | Feb | Mar | |
| Arts therapists | 33 | 33 | 33 | 32 | 33 | 33 | 33 | 31 | 31 | 31 | 31 | 31 | 31 | 31 | 30 | 30 | 29 | 29 | 29 | 29 | 28 | | | | |
| Biomedical scientists | 63 | 63 | 63 | 63 | 65 | 65 | 65 | 61 | 61 | 61 | 65 | 65 | 65 | 65 | 65 | 63 | 63 | 62 | 62 | 62 | 62 | 62 | | | |
| Chiropodists/ Podiatrists | 21 | 21 | 21 | 21 | 23 | 23 | 23 | 20 | 20 | 20 | 20 | 20 | 20 | 20 | 20 | 19 | 19 | 19 | 19 | 19 | 17 | | | | |
| Clinical scientists | 3 | 3 | 3 | 3 | 3 | 3 | 3 | 3 | 3 | 3 | 3 | 3 | 3 | 3 | 3 | 3 | 3 | 3 | 3 | 3 | 3 | | | | |
| Dietitians | 32 | 32 | 32 | 32 | 32 | 32 | 32 | 32 | 32 | 32 | 32 | 32 | 32 | 32 | 32 | 32 | 32 | 32 | 32 | 32 | 32 | | | | |
| Hearing aid dispensers | 23 | 22 | 22 | 23 | 23 | 23 | 23 | 22 | 22 | 22 | 22 | 22 | 22 | 22 | 22 | 20 | 20 | 20 | 20 | 19 | 19 | | | | |
| Occupational therapists | 73 | 73 | 71 | 73 | 73 | 73 | 73 | 70 | 70 | 70 | 70 | 70 | 70 | 70 | 71 | 71 | 71 | 70 | 70 | 69 | 69 | 68 | | | |
| Operating Department Practitioners | 40 | 40 | 40 | 40 | 42 | 42 | 42 | 37 | 38 | 38 | 38 | 38 | 38 | 38 | 37 | 37 | 38 | 38 | 37 | 37 | 37 | | | | |
| Orthoptists | 3 | 3 | 3 | 3 | 3 | 3 | 3 | 3 | 3 | 3 | 3 | 3 | 3 | 3 | 3 | 3 | 3 | 3 | 3 | 3 | 3 | | | | |
| Paramedics | 62 | 64 | 67 | 67 | 72 | 75 | 75 | 72 | 72 | 76 | 74 | 77 | 77 | 77 | 75 | 76 | 77 | 78 | 75 | 74 | 77 | | | | |
| Physiotherapists | 70 | 69 | 68 | 70 | 70 | 71 | 71 | 70 | 70 | 70 | 70 | 71 | 71 | 70 | 70 | 70 | 71 | 71 | 71 | 71 | 71 | | | | |
| Practitioner psychologists | 96 | 96 | 96 | 96 | 97 | 99 | 99 | 102 | 102 | 102 | 102 | 102 | 102 | 103 | 101 | 101 | 101 | 101 | 101 | 102 | 104 | | | | |
| Prosthetists/Orthotists | 3 | 3 | 3 | 3 | 3 | 3 | 3 | 3 | 3 | 3 | 3 | 2 | 2 | 2 | 2 | 2 | 2 | 2 | 2 | 2 | 2 | | | | |
| Radiographers | 52 | 52 | 52 | 52 | 52 | 52 | 52 | 50 | 50 | 50 | 50 | 51 | 52 | 53 | 52 | 52 | 54 | 54 | 54 | 54 | 54 | | | | |
| Social workers in England | 248 | 249 | 250 | 250 | 256 | 255 | 255 | 241 | 243 | 245 | 243 | 242 | 242 | 243 | 242 | 250 | 251 | 253 | 253 | 252 | 252 | | | | |
| Speech and language therapists | 35 | 36 | 36 | 36 | 36 | 36 | 36 | 34 | 34 | 34 | 34 | 34 | 34 | 34 | 34 | 34 | 34 | 34 | 33 | 33 | 33 | | | | |
| Prescription only medicines - administration | 4 | 4 | 4 | 4 | 4 | 4 | 4 | 4 | 4 | 4 | 4 | 4 | 4 | 4 | 4 | 4 | 4 | 4 | 4 | 4 | 4 | | | | |
| Prescription only medicines – sale / supply | 9 | 9 | 9 | 9 | 9 | 9 | 9 | 9 | 9 | 8 | 8 | 8 | 8 | 8 | 7 | 7 | 7 | 7 | 7 | 6 | 6 | | | | |
| Supplementary prescribing | 59 | 59 | 58 | 59 | 59 | 59 | 59 | 59 | 59 | 59 | 56 | 53 | 53 | 52 | 52 | 52 | 52 | 52 | 52 | 52 | 52 | | | | |
| Independent prescribing | 89 | 90 | 90 | 91 | 93 | 93 | 93 | 95 | 95 | 94 | 94 | 93 | 93 | 94 | 94 | 94 | 96 | 95 | 94 | 94 | | | | | |
| Approved mental health professionals | 33 | 33 | 36 | 36 | 36 | 36 | 34 | 34 | 34 | 34 | 34 | 34 | 34 | 36 | 32 | 32 | 32 | 32 | 32 | 32 | 32 | | | | |
| Podiatric surgery | | | | | | | | | | | | | | | | | | | | | | | | | |
| Total approved programmes | 1,051 | 1,054 | 1,057 | 1,063 | 1,084 | 1,089 | 1,089 | 1,052 | 1,055 | 1,063 | 1,056 | 1,055 | 1,056 | 1,060 | 1,046 | 1,054 | 1,055 | 1,060 | 1,053 | 1,049 | 1051 | | | | |
| Total approved education providers | 150 | 151 | 151 | 152 | 153 | 153 | 153 | 151 | 151 | 151 | 150 | 150 | 150 | 151 | 147 | 147 | 148 | 149 | 147 | 146 | 146 | | | | |

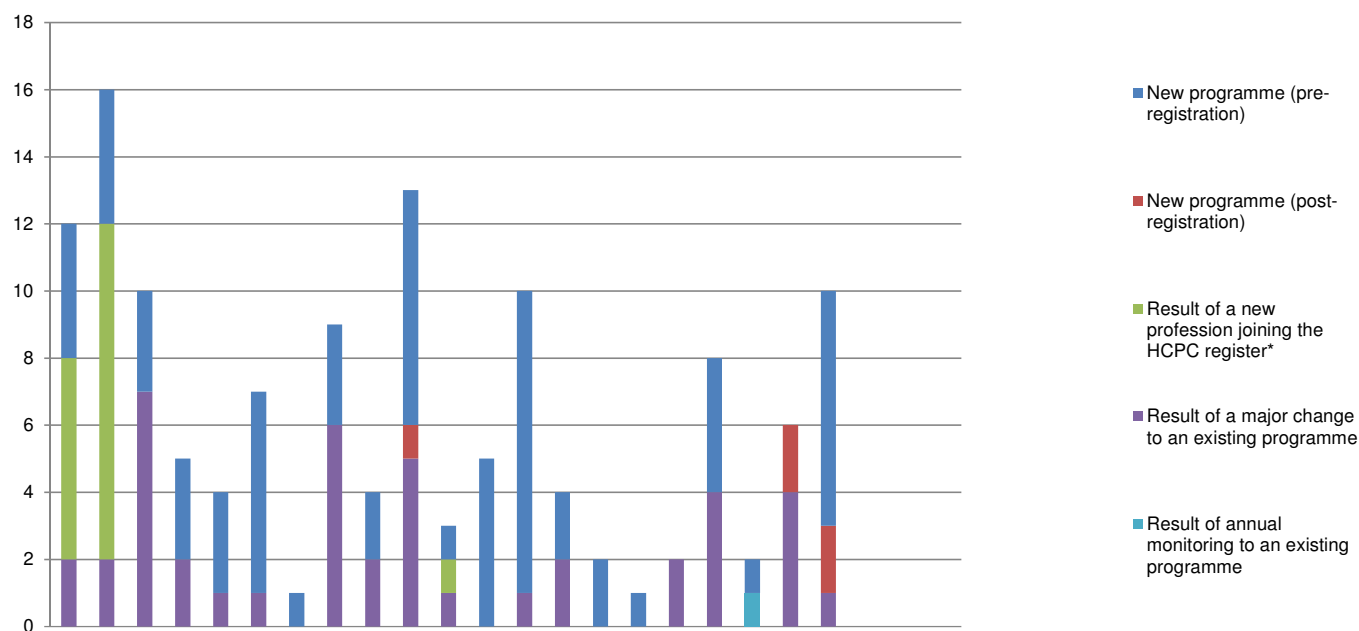
| 2011/12 | 2012/13 | 2013/14 | 2014/15 | 2015/16 | 2016/17 |
|---------|---------|---------|---------|---------|---------|
| FYE | FYE | FYE | FYE | FYE | YTD |
| 21 | 29 | 30 | 28 | 31 | 28 |
| 49 | 60 | 57 | 55 | 65 | 62 |
| 20 | 18 | 17 | 16 | 20 | 17 |
| 1 | 3 | 3 | 3 | 3 | 3 |
| 33 | 32 | 32 | 32 | 32 | 32 |
| 18 | 15 | 18 | 20 | 22 | 19 |
| 74 | 73 | 70 | 69 | 70 | 68 |
| 34 | 35 | 34 | 34 | 38 | 37 |
| 3 | 3 | 3 | 3 | 3 | 3 |
| 50 | 50 | 49 | 53 | 77 | 77 |
| 67 | 65 | 69 | 69 | 71 | 72 |
| 95 | 91 | 91 | 93 | 102 | 104 |
| 3 | 3 | 3 | 3 | 2 | 2 |
| 56 | 53 | 51 | 50 | 51 | 54 |
| | 231 | 223 | 221 | 242 | 252 |
| 32 | 31 | 30 | 31 | 34 | 33 |
| 2 | 4 | 4 | 4 | 4 | 4 |
| 9 | 9 | 10 | 9 | 8 | 6 |
| 77 | 77 | 62 | 59 | 53 | 52 |
| | | 86 | 89 | 93 | 94 |
| | 27 | 26 | 26 | 34 | 32 |
| 644 | 909 | 968 | 967 | 1,055 | 1051 |
| 128 | 150 | 151 | 143 | 150 | 146 |



| Overview of approval visits | 2015 | | | 2016 | | | | | | | | | 2017 | | | | | | | | | | | |
|------------------------------|------|-----|-----|------|-----|-----|-----|-----|-----|-----|-----|-----|------|-----|-----|-----|-----|-----|-----|-----|-----|-----|-----|-----|
| | Apr | May | Jun | Jul | Aug | Sep | Oct | Nov | Dec | Jan | Feb | Mar | Apr | May | Jun | Jul | Aug | Sep | Oct | Nov | Dec | Jan | Feb | Mar |
| Number of visits | 8 | 8 | 7 | 4 | 2 | 6 | 1 | 6 | 4 | 6 | 3 | 4 | 7 | 3 | 2 | 1 | 2 | 3 | 2 | 3 | 6 | | | |
| Number of programmes visited | 12 | 16 | 10 | 5 | 4 | 7 | 1 | 9 | 4 | 13 | 3 | 5 | 10 | 4 | 2 | 1 | 2 | 8 | 2 | 6 | 10 | | | |

| 2011/12 | 2012/13 | 2013/14 | 2014/15 | 2015/16 | 2016/17 |
|---------|---------|---------|---------|---------|---------|
| FYE | FYE | FYE | FYE | FYE | YTD |
| 59 | 56 | 66 | 69 | 59 | 29 |
| 112 | 103 | 170 | 132 | 89 | 45 |

Reasons for approval visits April 2015 - March 2017

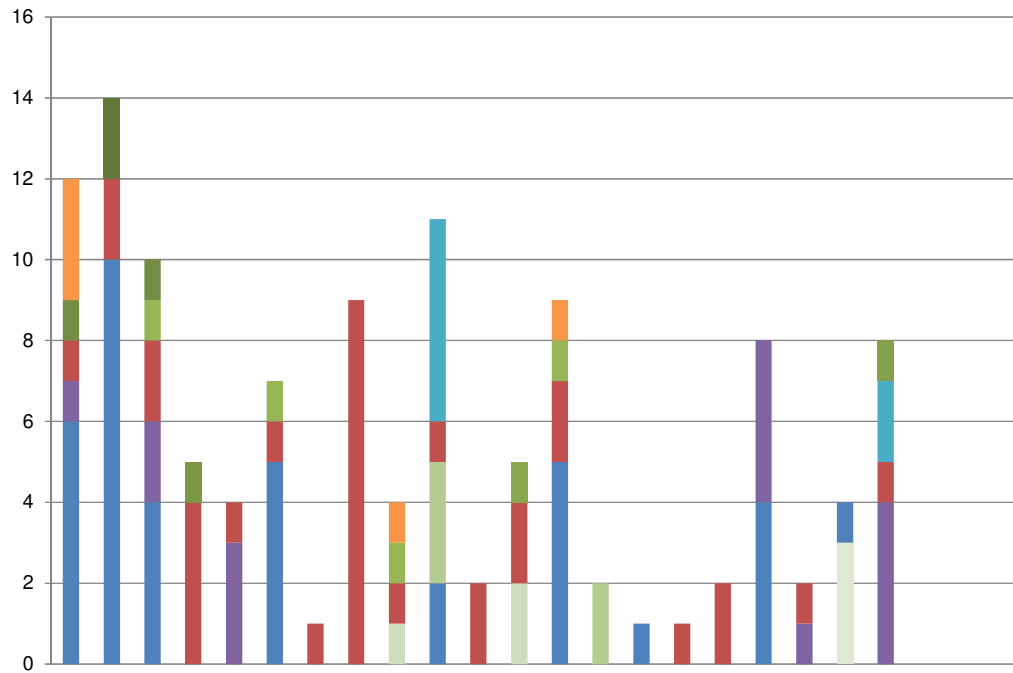


| Reason for programme visited | 2015 | | | 2016 | | | | | | | | | | | 2017 | | | | | | | | | |
|---|-----------|-----------|-----------|----------|----------|----------|----------|----------|----------|-----------|----------|----------|-----------|----------|----------|----------|----------|----------|----------|----------|-----------|-----|-----|-----|
| | Apr | May | Jun | Jul | Aug | Sep | Oct | Nov | Dec | Jan | Feb | Mar | Apr | May | Jun | Jul | Aug | Sep | Oct | Nov | Dec | Jan | Feb | Mar |
| New programme (pre-registration) | 4 | 4 | 3 | 3 | 3 | 6 | 1 | 3 | 2 | 7 | 1 | 5 | 9 | 2 | 2 | 1 | 0 | 4 | 1 | 0 | 7 | | | |
| New programme (post-registration) | 0 | 0 | 0 | 0 | 0 | 0 | 0 | 0 | 0 | 1 | 0 | 0 | 0 | 0 | 0 | 0 | 0 | 0 | 0 | 2 | 2 | | | |
| Result of a new profession joining the HCPC register* | 6 | 10 | 0 | 0 | 0 | 0 | 0 | 0 | 0 | 0 | 1 | 0 | 0 | 0 | 0 | 0 | 0 | 0 | 0 | 0 | 0 | | | |
| Result of a major change to an existing programme | 2 | 2 | 7 | 2 | 1 | 1 | 0 | 6 | 2 | 5 | 1 | 0 | 1 | 2 | 0 | 0 | 2 | 4 | 0 | 4 | 1 | | | |
| Result of annual monitoring to an existing programme | 0 | 0 | 0 | 0 | 0 | 0 | 0 | 0 | 0 | 0 | 0 | 0 | 0 | 0 | 0 | 0 | 0 | 0 | 1 | 0 | 0 | | | |
| Total | 12 | 16 | 10 | 5 | 4 | 7 | 1 | 9 | 4 | 13 | 3 | 5 | 10 | 4 | 2 | 1 | 2 | 8 | 2 | 6 | 10 | | | |

| 2011/12 FYE | 2012/13 FYE | 2013/14 FYE | 2014/15 FYE | 2015/16 FYE | 2016/17 YTD |
|----------------|----------------|----------------|----------------|----------------|----------------|
| 17 | 30 | 29 | 37 | 42 | 26 |
| 2 | 1 | 1 | 2 | 1 | 4 |
| 34 | 51 | 125 | 77 | 17 | 0 |
| 57 | 21 | 15 | 16 | 29 | 14 |
| 2 | 0 | 0 | 0 | 0 | 1 |
| 112 | 103 | 170 | 132 | 89 | 45 |

* Practitioner Psychologists, July 2009 - July 2012
 Hearing Aid Dispensers, April 2010 - July 2012
 Social workers in England, August 2012 - July 2015
 Approved Mental Health Professionals, September 2013 - July 2015

Approval visits, by profession, April 2015 - March 2017

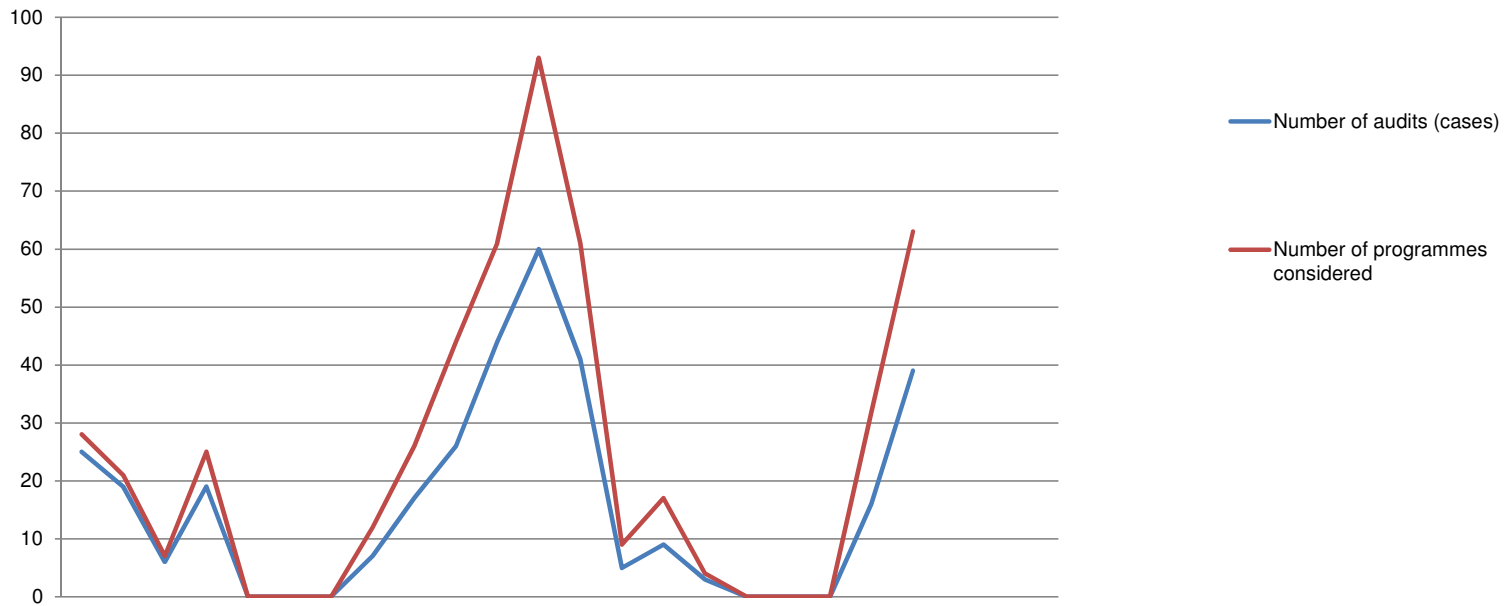


| Profession/entitlement | 2015 | | | 2016 | | | | | | | | | | | | 2017 | | | | | | | | |
|--|-----------|-----------|-----------|----------|----------|----------|----------|----------|----------|-----------|----------|----------|-----------|----------|----------|----------|----------|----------|----------|----------|-----------|-----------|-----------|-----------|
| | Apr | May | Jun | Jul | Aug | Sep | Oct | Nov | Dec | Jan | Feb | Mar | Apr | May | Jun | Jul | Aug | Sep | Oct | Nov | Dec | Jan | Feb | Mar |
| Arts therapists | 0 | 2 | 0 | 0 | 0 | 0 | 0 | 0 | 0 | 0 | 0 | 0 | 0 | 0 | 0 | 0 | 0 | 0 | 0 | 0 | 0 | 0 | 0 | 0 |
| Biomedical scientists | 3 | 0 | 0 | 0 | 0 | 0 | 0 | 0 | 0 | 1 | 0 | 0 | 0 | 1 | 0 | 0 | 0 | 0 | 0 | 0 | 0 | 0 | 0 | 0 |
| Chiropodists/ Podiatrists | 1 | 0 | 1 | 0 | 0 | 0 | 0 | 0 | 0 | 0 | 0 | 0 | 0 | 0 | 0 | 0 | 0 | 0 | 0 | 0 | 0 | 0 | 0 | 0 |
| Clinical scientists | 0 | 0 | 0 | 1 | 0 | 0 | 0 | 0 | 0 | 0 | 0 | 0 | 0 | 0 | 0 | 0 | 0 | 0 | 0 | 0 | 0 | 0 | 0 | 0 |
| Dietitians | 0 | 0 | 0 | 0 | 0 | 0 | 0 | 0 | 0 | 0 | 0 | 0 | 0 | 0 | 0 | 0 | 0 | 0 | 0 | 0 | 0 | 0 | 0 | 1 |
| Hearing aid dispensers | 0 | 0 | 0 | 0 | 0 | 0 | 0 | 0 | 0 | 0 | 0 | 0 | 1 | 0 | 0 | 0 | 0 | 0 | 0 | 0 | 0 | 0 | 0 | 0 |
| Occupational therapists | 0 | 0 | 0 | 0 | 0 | 0 | 0 | 0 | 0 | 0 | 5 | 0 | 0 | 0 | 0 | 0 | 0 | 0 | 0 | 0 | 0 | 0 | 2 | 0 |
| Operating Department Practitioners | 0 | 0 | 1 | 0 | 0 | 1 | 0 | 0 | 1 | 0 | 0 | 0 | 1 | 0 | 0 | 0 | 0 | 0 | 0 | 0 | 0 | 0 | 0 | 0 |
| Orthoptists | 0 | 0 | 0 | 0 | 0 | 0 | 0 | 0 | 0 | 0 | 0 | 0 | 0 | 0 | 0 | 0 | 0 | 0 | 0 | 0 | 0 | 0 | 0 | 0 |
| Paramedics | 1 | 2 | 2 | 4 | 1 | 1 | 1 | 9 | 1 | 1 | 2 | 2 | 2 | 0 | 0 | 1 | 2 | 0 | 1 | 0 | 1 | 0 | 1 | 0 |
| Physiotherapists | 0 | 0 | 0 | 0 | 0 | 0 | 0 | 0 | 0 | 3 | 0 | 0 | 0 | 2 | 0 | 0 | 0 | 0 | 0 | 0 | 0 | 0 | 0 | 0 |
| Practitioner psychologists | 1 | 0 | 2 | 0 | 3 | 0 | 0 | 0 | 0 | 0 | 0 | 0 | 0 | 0 | 0 | 0 | 0 | 4 | 1 | 0 | 4 | 0 | 4 | 0 |
| Prosthetists/Orthotists | 0 | 0 | 0 | 0 | 0 | 0 | 0 | 0 | 0 | 0 | 0 | 0 | 0 | 0 | 0 | 0 | 0 | 0 | 0 | 0 | 0 | 0 | 0 | 0 |
| Radiographers | 0 | 0 | 0 | 0 | 0 | 0 | 0 | 0 | 1 | 0 | 0 | 2 | 0 | 0 | 0 | 0 | 0 | 0 | 0 | 0 | 0 | 0 | 0 | 0 |
| Social workers in England | 6 | 10 | 4 | 0 | 0 | 5 | 0 | 0 | 0 | 2 | 0 | 0 | 5 | 0 | 1 | 0 | 0 | 4 | 0 | 1 | 0 | 0 | 0 | 0 |
| Speech and language therapists | 0 | 0 | 0 | 0 | 0 | 0 | 0 | 0 | 0 | 0 | 0 | 0 | 0 | 0 | 0 | 0 | 0 | 0 | 0 | 3 | 0 | 0 | 0 | 0 |
| Prescription only medicines - administration | 0 | 0 | 0 | 0 | 0 | 0 | 0 | 0 | 0 | 0 | 0 | 0 | 0 | 0 | 0 | 0 | 0 | 0 | 0 | 0 | 0 | 0 | 0 | 0 |
| Prescription only medicines - sale / supply | 0 | 0 | 0 | 0 | 0 | 0 | 0 | 0 | 0 | 0 | 0 | 0 | 0 | 0 | 0 | 0 | 0 | 0 | 0 | 0 | 0 | 0 | 0 | 0 |
| Supplementary prescribing | 0 | 0 | 0 | 0 | 0 | 0 | 0 | 0 | 0 | 0 | 0 | 0 | 1 | 1 | 0 | 0 | 0 | 0 | 0 | 0 | 0 | 0 | 0 | 0 |
| Independent prescribing | 0 | 0 | 0 | 0 | 0 | 0 | 0 | 0 | 0 | 0 | 0 | 0 | 0 | 1 | 1 | 0 | 0 | 0 | 0 | 0 | 2 | 0 | 0 | 0 |
| Approved mental health professionals | 0 | 2 | 0 | 0 | 0 | 0 | 0 | 0 | 0 | 2 | 0 | 0 | 0 | 0 | 0 | 0 | 0 | 0 | 0 | 0 | 0 | 0 | 0 | 0 |
| Podiatric surgery | | | | | | | | | | | | 1 | 0 | 0 | 0 | 0 | 0 | 0 | 0 | 0 | 0 | 2 | 0 | 2 |
| Total - pre-registration | 12 | 14 | 10 | 5 | 4 | 7 | 1 | 9 | 4 | 11 | 2 | 5 | 9 | 2 | 1 | 1 | 2 | 8 | 2 | 4 | 8 | 8 | 8 | 8 |
| Total - post-registration | 0 | 2 | 0 | 0 | 0 | 0 | 0 | 0 | 0 | 2 | 1 | 0 | 1 | 2 | 1 | 0 | 0 | 0 | 0 | 2 | 2 | 2 | 2 | 2 |
| Grand total | 12 | 16 | 10 | 5 | 4 | 7 | 1 | 9 | 4 | 13 | 3 | 5 | 10 | 4 | 2 | 1 | 2 | 8 | 2 | 6 | 10 | 10 | 10 | 10 |

- Arts therapists
- Biomedical scientists
- Chiropodists/ Podiatrists
- Clinical scientists
- Dietitians
- Hearing aid dispensers
- Occupational therapists
- Operating Department Practitioners
- Orthoptists
- Paramedics
- Physiotherapists
- Practitioner psychologists
- Prosthetists/Orthotists
- Radiographers
- Social workers in England
- Speech and language therapists

| 2015/16 | 2016/17 |
|---------|---------|
| FYE | YTD |
| 2 | 0 |
| 4 | 1 |
| 2 | 0 |
| 1 | 0 |
| 0 | 1 |
| 1 | 0 |
| 5 | 2 |
| 3 | 1 |
| 0 | 0 |
| 27 | 7 |
| 3 | 2 |
| 6 | 9 |
| 0 | 0 |
| 3 | 0 |
| 27 | 11 |
| 0 | 3 |
| 0 | 0 |
| 0 | 0 |
| 0 | 2 |
| 0 | 4 |
| 4 | 0 |
| 84 | 37 |
| 5 | 8 |
| 89 | 45 |

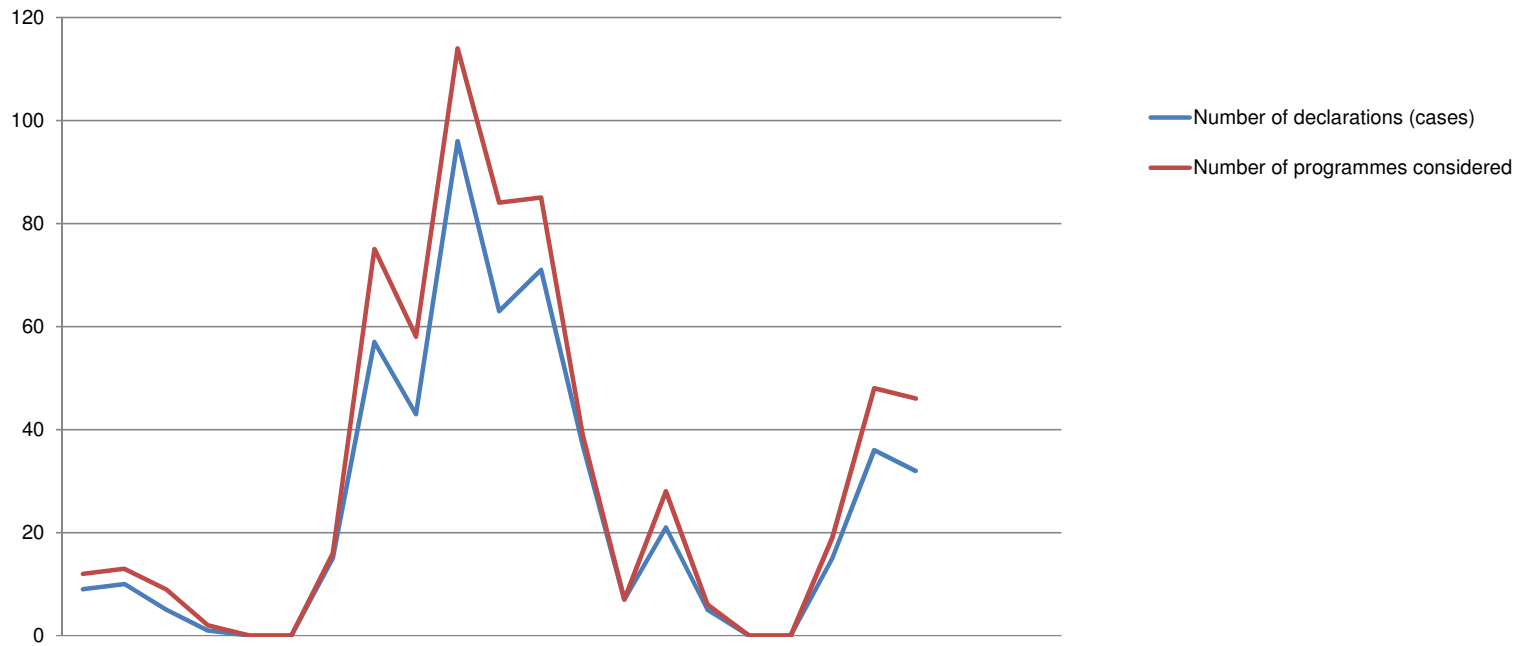
Overview of annual monitoring audit submissions, April 2015 - March 2017



| Type of submission | 2015 | | | 2016 | | | | | | | | | 2017 | | | | | | | | | | | |
|---------------------------------|------|-----|-----|------|-----|-----|-----|-----|-----|-----|-----|-----|------|-----|-----|-----|-----|-----|-----|-----|-----|-----|-----|-----|
| | Apr | May | Jun | Jul | Aug | Sep | Oct | Nov | Dec | Jan | Feb | Mar | Apr | May | Jun | Jul | Aug | Sep | Oct | Nov | Dec | Jan | Feb | Mar |
| Number of audits (cases) | 25 | 19 | 6 | 19 | 0 | 0 | 0 | 7 | 17 | 26 | 44 | 60 | 41 | 5 | 9 | 3 | 0 | 0 | 0 | 16 | 39 | | | |
| Number of programmes considered | 28 | 21 | 7 | 25 | 0 | 0 | 0 | 12 | 26 | 44 | 61 | 93 | 61 | 9 | 17 | 4 | 0 | 0 | 0 | 32 | 63 | | | |

| 2011/12 | 2012/13 | 2013/14 | 2014/15 | 2015/16 | 2016/17 |
|---------|---------|---------|---------|---------|---------|
| FYE | FYE | FYE | FYE | FYE | YTD |
| 163 | 199 | 222 | 209 | 223 | 113 |
| 206 | 282 | 268 | 286 | 317 | 186 |

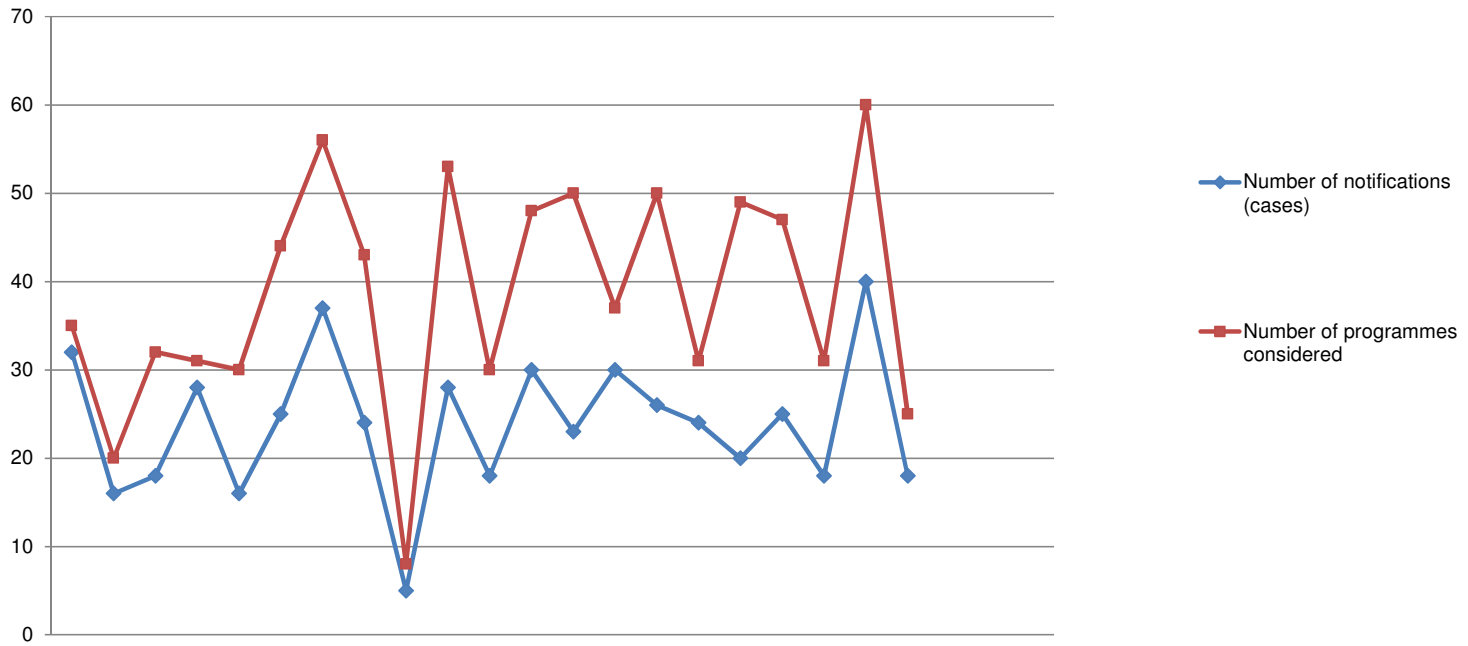
Overview of annual monitoring declarations, April 2015 - March 2017



| Type of submission | 2015 | | | 2016 | | | | | | | | | 2017 | | | | | | | | | | | |
|---------------------------------|------|-----|-----|------|-----|-----|-----|-----|-----|-----|-----|-----|------|-----|-----|-----|-----|-----|-----|-----|-----|-----|-----|-----|
| | Apr | May | Jun | Jul | Aug | Sep | Oct | Nov | Dec | Jan | Feb | Mar | Apr | May | Jun | Jul | Aug | Sep | Oct | Nov | Dec | Jan | Feb | Mar |
| Number of declarations (cases) | 9 | 10 | 5 | 1 | 0 | 0 | 15 | 57 | 43 | 96 | 63 | 71 | 37 | 7 | 21 | 5 | 0 | 0 | 15 | 36 | 32 | | | |
| Number of programmes considered | 12 | 13 | 9 | 2 | 0 | 0 | 16 | 75 | 58 | 114 | 84 | 85 | 39 | 7 | 28 | 6 | 0 | 0 | 19 | 48 | 46 | | | |

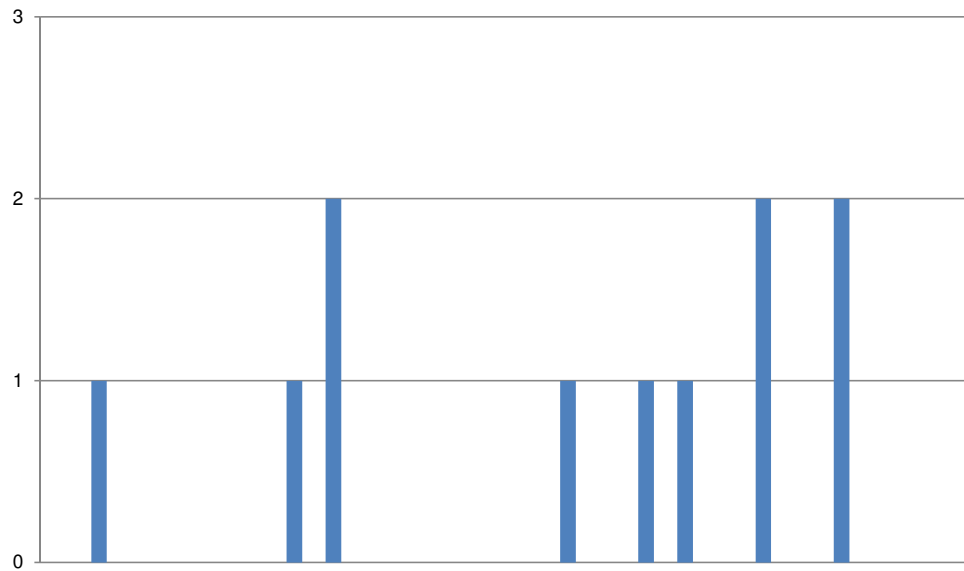
| 2011/12 | 2012/13 | 2013/14 | 2014/15 | 2015/16 | 2016/17 |
|---------|---------|---------|---------|---------|---------|
| FYE | FYE | FYE | FYE | FYE | YTD |
| 232 | 199 | 222 | 231 | 370 | 153 |
| 249 | 267 | 297 | 316 | 468 | 193 |

Overview of major change submissions, April 2015 - March 2017



| Overview of notifications | 2015 | | | 2016 | | | | | | | | | 2017 | | | | | | | | | | | |
|---------------------------------|------|-----|-----|------|-----|-----|-----|-----|-----|-----|-----|-----|------|-----|-----|-----|-----|-----|-----|-----|-----|-----|-----|-----|
| | Apr | May | Jun | Jul | Aug | Sep | Oct | Nov | Dec | Jan | Feb | Mar | Apr | May | Jun | Jul | Aug | Sep | Oct | Nov | Dec | Jan | Feb | Mar |
| Number of notifications (cases) | 32 | 16 | 18 | 28 | 16 | 25 | 37 | 24 | 5 | 28 | 18 | 30 | 23 | 30 | 26 | 24 | 20 | 25 | 18 | 40 | 18 | | | |
| Number of programmes considered | 35 | 20 | 32 | 31 | 30 | 44 | 56 | 43 | 8 | 53 | 30 | 48 | 50 | 37 | 50 | 31 | 49 | 47 | 31 | 60 | 25 | | | |

| 2011/12 | 2012/13 | 2013/14 | 2014/15 | 2015/16 | 2016/17 |
|---------|---------|---------|---------|---------|---------|
| FYE | FYE | FYE | FYE | FYE | YTD |
| 174 | 146 | 157 | 200 | 277 | 224 |
| 311 | 266 | 250 | 398 | 430 | 380 |



■ Number of concerns received

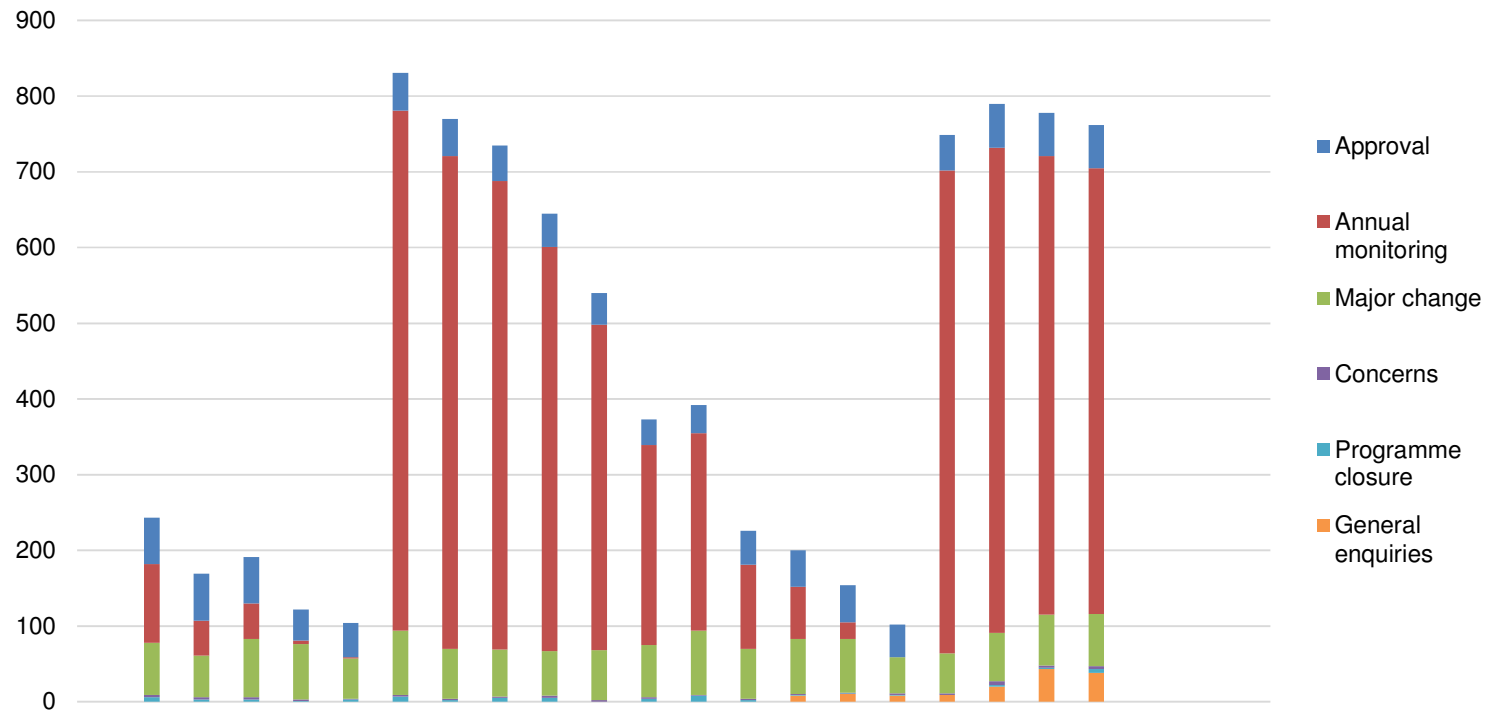
| | 2015 | | | 2016 | | | | | | | | | 2017 | | | | | | | | | | | |
|-----------------------------|------|-----|-----|------|-----|-----|-----|-----|-----|-----|-----|-----|------|-----|-----|-----|-----|-----|-----|-----|-----|-----|-----|-----|
| | Apr | May | Jun | Jul | Aug | Sep | Oct | Nov | Dec | Jan | Feb | Mar | Apr | May | Jun | Jul | Aug | Sep | Oct | Nov | Dec | Jan | Feb | Mar |
| Number of concerns received | 0 | 1 | 0 | 0 | 0 | 0 | 1 | 2 | 0 | 0 | 0 | 0 | 0 | 1 | 0 | 1 | 1 | 0 | 2 | 0 | 2 | 0 | 0 | 0 |

| | 2011/12 FYE | 2012/13 FYE | 2013/14 FYE | 2014/15 FYE | 2015/16 FYE | 2016/17 YTD |
|-----------------------------------|----------------|----------------|----------------|----------------|----------------|----------------|
| Total number of approved progs | 644 | 909 | 968 | 967 | 1,055 | 1,051 |
| % programmes affected by concerns | 0.8% | 0.7% | 0.5% | 0.8% | 0.4% | 0.7% |

| Outcome of process | 2015 | | | 2016 | | | | | | | | | 2017 | | | | | | | | | | | |
|---------------------------|------|-----|-----|------|-----|-----|-----|-----|-----|-----|-----|-----|------|-----|-----|-----|-----|-----|-----|-----|-----|-----|-----|-----|
| | Apr | May | Jun | Jul | Aug | Sep | Oct | Nov | Dec | Jan | Feb | Mar | Apr | May | Jun | Jul | Aug | Sep | Oct | Nov | Dec | Jan | Feb | Mar |
| Directed visit | 0 | 0 | 0 | 0 | 0 | 0 | 0 | 0 | 0 | 0 | 0 | 0 | 0 | 0 | 0 | 0 | 0 | 0 | 0 | 0 | 0 | 0 | 0 | 0 |
| Approval process | 0 | 1 | 0 | 0 | 0 | 0 | 0 | 0 | 0 | 0 | 0 | 0 | 0 | 0 | 0 | 0 | 0 | 0 | 0 | 0 | 0 | 0 | 0 | 0 |
| Major change process | 0 | 0 | 0 | 0 | 0 | 0 | 0 | 0 | 0 | 0 | 0 | 0 | 0 | 0 | 0 | 0 | 0 | 0 | 0 | 0 | 0 | 0 | 0 | 0 |
| Annual monitoring process | 0 | 0 | 0 | 0 | 0 | 0 | 0 | 0 | 0 | 0 | 0 | 0 | 0 | 0 | 0 | 0 | 0 | 0 | 0 | 0 | 0 | 0 | 0 | 0 |
| Withdrawn | 0 | 0 | 0 | 0 | 0 | 0 | 1 | 0 | 0 | 0 | 0 | 0 | 0 | 0 | 0 | 0 | 0 | 0 | 0 | 0 | 0 | 0 | 0 | 0 |
| Unsubstantiated | 0 | 0 | 0 | 0 | 0 | 0 | 0 | 2 | 0 | 0 | 0 | 0 | 0 | 0 | 0 | 1 | 1 | 0 | 1 | 0 | 0 | 0 | 0 | 0 |
| Pending | 0 | 0 | 0 | 0 | 0 | 0 | 0 | 0 | 0 | 0 | 0 | 0 | 0 | 1 | 0 | 0 | 0 | 1 | 0 | 2 | 0 | 0 | 0 | 0 |

| | 2011/12 FYE | 2012/13 FYE | 2013/14 FYE | 2014/15 FYE | 2015/16 FYE | 2016/17 YTD |
|---|----------------|----------------|----------------|----------------|----------------|----------------|
| 0 | 0 | 0 | 0 | 1 | 0 | 0 |
| 1 | 1 | 0 | 1 | 0 | 1 | 0 |
| 1 | 1 | 0 | 0 | 0 | 0 | 0 |
| 0 | 0 | 0 | 0 | 0 | 0 | 0 |
| 0 | 0 | 0 | 0 | 0 | 1 | 0 |
| 3 | 3 | 6 | 4 | 7 | 2 | 3 |
| 0 | 0 | 0 | 0 | 0 | 0 | 4 |

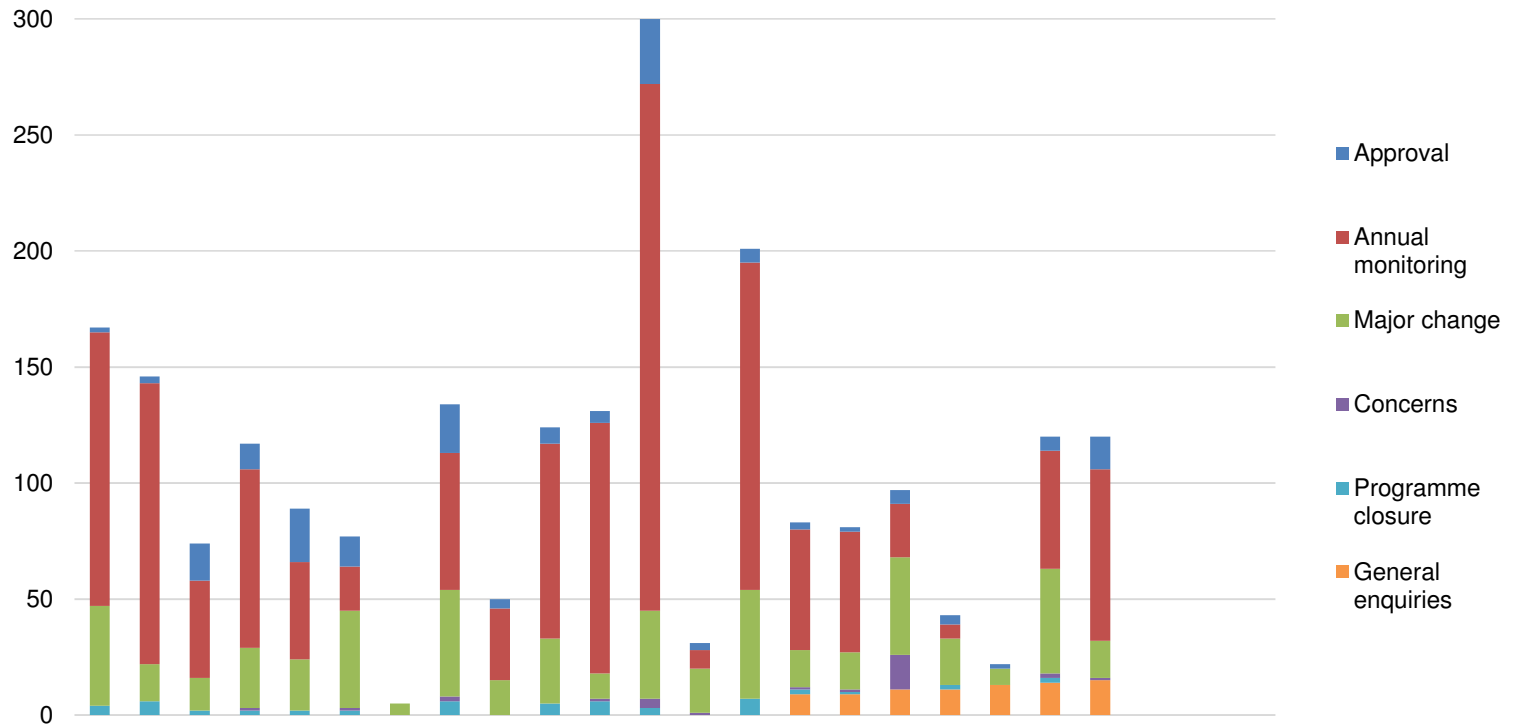
Overview of workload, Number of active cases, April 2015 - March 2017



| Work area | 2015 | | | 2016 | | | | | | | | | | | 2017 | | | | | | | | | |
|-------------------|------|------------|------------|------------|------------|------------|------------|------------|------------|------------|------------|------------|------------|------------|------------|------------|------------|------------|------------|------------|------------|-----|-----|-----|
| | Apr | May | Jun | Jul | Aug | Sep | Oct | Nov | Dec | Jan | Feb | Mar | Apr | May | Jun | Jul | Aug | Sep | Oct | Nov | Dec | Jan | Feb | Mar |
| Approval | | 61 | 62 | 61 | 41 | 45 | 50 | 49 | 47 | 44 | 42 | 34 | 37 | 45 | 48 | 49 | 43 | 47 | 58 | 57 | 57 | | | |
| Annual monitoring | | 104 | 46 | 47 | 5 | 2 | 687 | 651 | 619 | 534 | 430 | 264 | 261 | 111 | 69 | 22 | 0 | 638 | 641 | 606 | 589 | | | |
| Major change | | 69 | 55 | 77 | 73 | 53 | 85 | 66 | 62 | 59 | 66 | 69 | 85 | 66 | 73 | 71 | 48 | 53 | 64 | 67 | 69 | | | |
| Concerns | | 3 | 3 | 3 | 2 | 1 | 2 | 2 | 2 | 3 | 2 | 2 | 1 | 2 | 1 | 1 | 2 | 2 | 5 | 3 | 4 | | | |
| Programme closure | | 6 | 3 | 3 | 1 | 3 | 7 | 2 | 5 | 5 | 0 | 4 | 8 | 2 | 1 | 1 | 1 | 0 | 2 | 2 | 5 | | | |
| General enquiries | | | | | | | | | | | | | | | 8 | 10 | 8 | 9 | 20 | 43 | 38 | | | |
| Total | | 243 | 169 | 191 | 122 | 104 | 831 | 770 | 735 | 645 | 540 | 373 | 392 | 226 | 200 | 154 | 102 | 749 | 790 | 778 | 762 | | | |

| 2015/16 | 2016/17 |
|--------------|------------|
| FYE | YTD |
| 34 | 58 |
| 264 | 641 |
| 69 | 64 |
| 2 | 5 |
| 4 | 2 |
| | 20 |
| 4,723 | 790 |

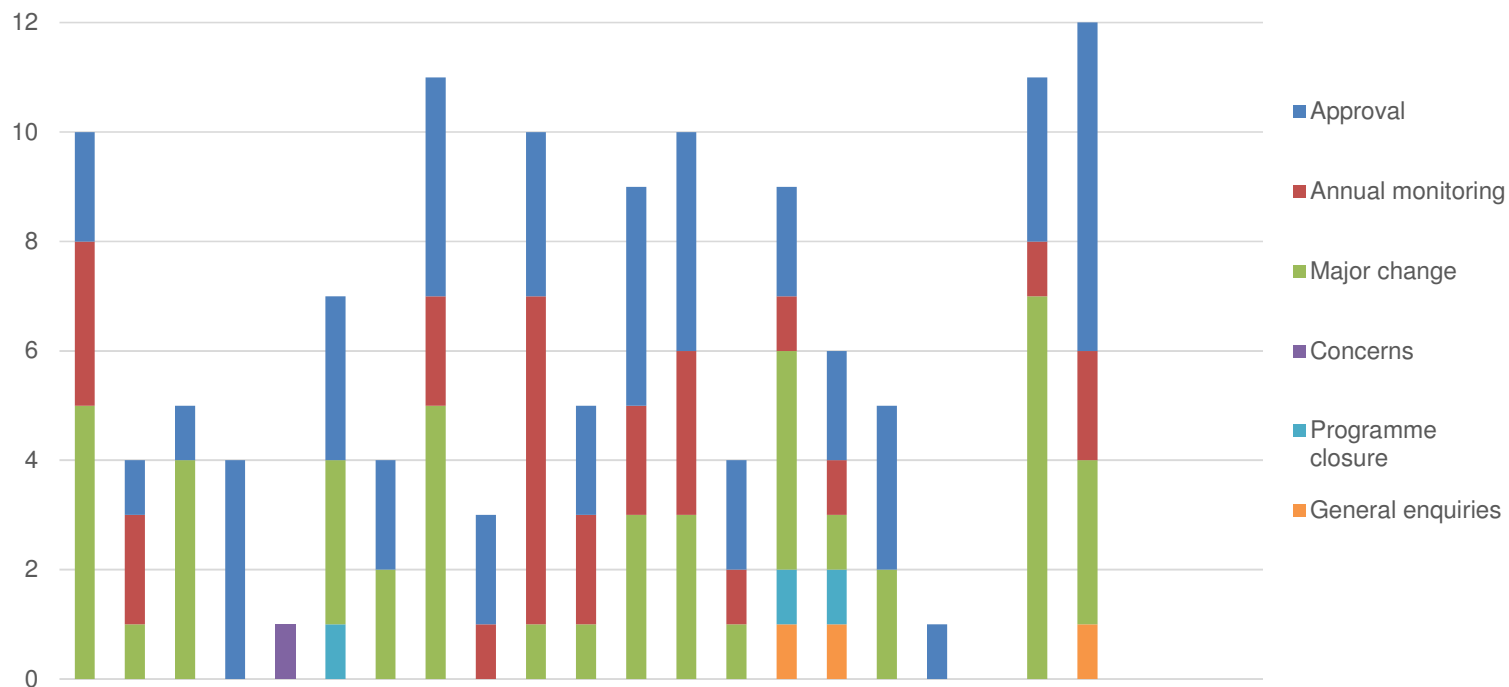
Overview of workload, Number of resolved cases, April 2015 - March 2017



| Work area | 2015 | | | 2016 | | | | | | | | | 2017 | | | | | | | | | | | |
|-------------------|------------|------------|-----------|------------|-----------|-----------|----------|------------|-----------|------------|------------|------------|-----------|------------|-----------|-----------|-----------|-----------|-----------|------------|------------|----------|----------|----------|
| | Apr | May | Jun | Jul | Aug | Sep | Oct | Nov | Dec | Jan | Feb | Mar | Apr | May | Jun | Jul | Aug | Sep | Oct | Nov | Dec | Jan | Feb | Mar |
| Approval | 2 | 3 | 16 | 11 | 23 | 13 | 0 | 21 | 4 | 7 | 5 | 28 | 3 | 6 | 3 | 2 | 6 | 4 | 2 | 6 | 14 | | | |
| Annual monitoring | 118 | 121 | 42 | 77 | 42 | 19 | 0 | 59 | 31 | 84 | 108 | 227 | 8 | 141 | 52 | 52 | 23 | 6 | 0 | 51 | 74 | | | |
| Major change | 43 | 16 | 14 | 26 | 22 | 42 | 5 | 46 | 15 | 28 | 11 | 38 | 19 | 47 | 16 | 16 | 42 | 20 | 7 | 45 | 16 | | | |
| Concerns | 0 | 0 | 0 | 1 | 0 | 1 | 0 | 2 | 0 | 0 | 1 | 4 | 1 | 0 | 1 | 1 | 15 | 0 | 0 | 2 | 1 | | | |
| Programme closure | 4 | 6 | 2 | 2 | 2 | 2 | 0 | 6 | 0 | 5 | 6 | 3 | 0 | 7 | 2 | 1 | 0 | 2 | 0 | 2 | 0 | | | |
| General enquiries | | | | | | | | | | | | | | | 9 | 9 | 11 | 11 | 13 | 14 | 15 | | | |
| Total | 167 | 146 | 74 | 117 | 89 | 77 | 5 | 134 | 50 | 124 | 131 | 300 | 31 | 201 | 83 | 81 | 97 | 43 | 22 | 120 | 120 | 0 | 0 | 0 |

| 2015/16 | 2016/17 |
|--------------|------------|
| FYE | YTD |
| 133 | 46 |
| 928 | 407 |
| 306 | 228 |
| 9 | 21 |
| 38 | 14 |
| | 82 |
| 1,414 | 798 |

Overview of workload, Number of cancelled cases, April 2015 - March 2017



| Work area | 2015 | | | 2016 | | | | | | | | | | | | 2017 | | | | | | | | |
|-------------------|-----------|----------|----------|----------|----------|----------|----------|-----------|----------|-----------|----------|----------|-----------|----------|----------|----------|----------|----------|----------|-----------|-----------|----------|----------|----------|
| | Apr | May | Jun | Jul | Aug | Sep | Oct | Nov | Dec | Jan | Feb | Mar | Apr | May | Jun | Jul | Aug | Sep | Oct | Nov | Dec | Jan | Feb | Mar |
| Approval | 2 | 1 | 1 | 4 | 0 | 3 | 2 | 4 | 2 | 3 | 2 | 4 | 4 | 2 | 2 | 2 | 3 | 1 | 0 | 3 | 6 | | | |
| Annual monitoring | 3 | 2 | 0 | 0 | 0 | 0 | 0 | 2 | 1 | 6 | 2 | 2 | 3 | 1 | 1 | 1 | 0 | 0 | 0 | 1 | 2 | | | |
| Major change | 5 | 1 | 4 | 0 | 0 | 3 | 2 | 5 | 0 | 1 | 1 | 3 | 3 | 1 | 4 | 1 | 2 | 0 | 0 | 7 | 3 | | | |
| Concerns | 0 | 0 | 0 | 0 | 1 | 0 | 0 | 0 | 0 | 0 | 0 | 0 | 0 | 0 | 0 | 0 | 0 | 0 | 0 | 0 | 0 | | | |
| Programme closure | 0 | 0 | 0 | 0 | 0 | 1 | 0 | 0 | 0 | 0 | 0 | 0 | 0 | 0 | 1 | 1 | 0 | 0 | 0 | 0 | 0 | | | |
| General enquiries | | | | | | | | | | | | | | | 1 | 1 | 0 | 0 | 0 | 0 | 1 | | | |
| Total | 10 | 4 | 5 | 4 | 1 | 7 | 4 | 11 | 3 | 10 | 5 | 9 | 10 | 4 | 9 | 6 | 5 | 1 | 0 | 11 | 12 | 0 | 0 | 0 |

| 2015/16 | 2016/17 |
|-----------|-----------|
| FYE | YTD |
| 28 | 23 |
| 18 | 9 |
| 25 | 21 |
| 1 | 0 |
| 1 | 2 |
| | 3 |
| 73 | 58 |