

## Council Meeting 6 – 7th July 2016

### Registrant numbers forecast 2016-2019

### Executive summary and recommendations

#### **Introduction**

The Registration numbers Forecast looks to provide information around changes to numbers of registrants over time.

The forecast is revised every year. Information around assumptions has been included for each section where appropriate after discussion with members of EMT, CDT and the Chief Executive. These assumptions have been refined over the last ten years.

Note this model was updated in June 2016 when end of Financial year data were available for 2015-16. Projected registrant numbers further forward in time are necessarily based on less tightly constrained data.

The information has been produced in the FAST format, a methodology suggested by Mazars, to allow rapid determination of errors if they occur. Note, this does not prevent errors occurring.

This report does not calculate income but is used as a basis for this process within the Finance department. It also supports the Three Year plan.

#### **Decision**

The Council is requested to note the document. No decision is required.

#### **Background information**

##### **Resource implications**

Informs annual departmental work plans

##### **Financial implications**

Informs annual departmental work plans

#### **Appendices**

##### **Date of paper**

27<sup>th</sup> June 2016

**REG <<<**

## Registration Numbers Forecast

Roy Dunn, Head of Business Process Improvement  
Internal working document

**27/06/2016**



## Contents

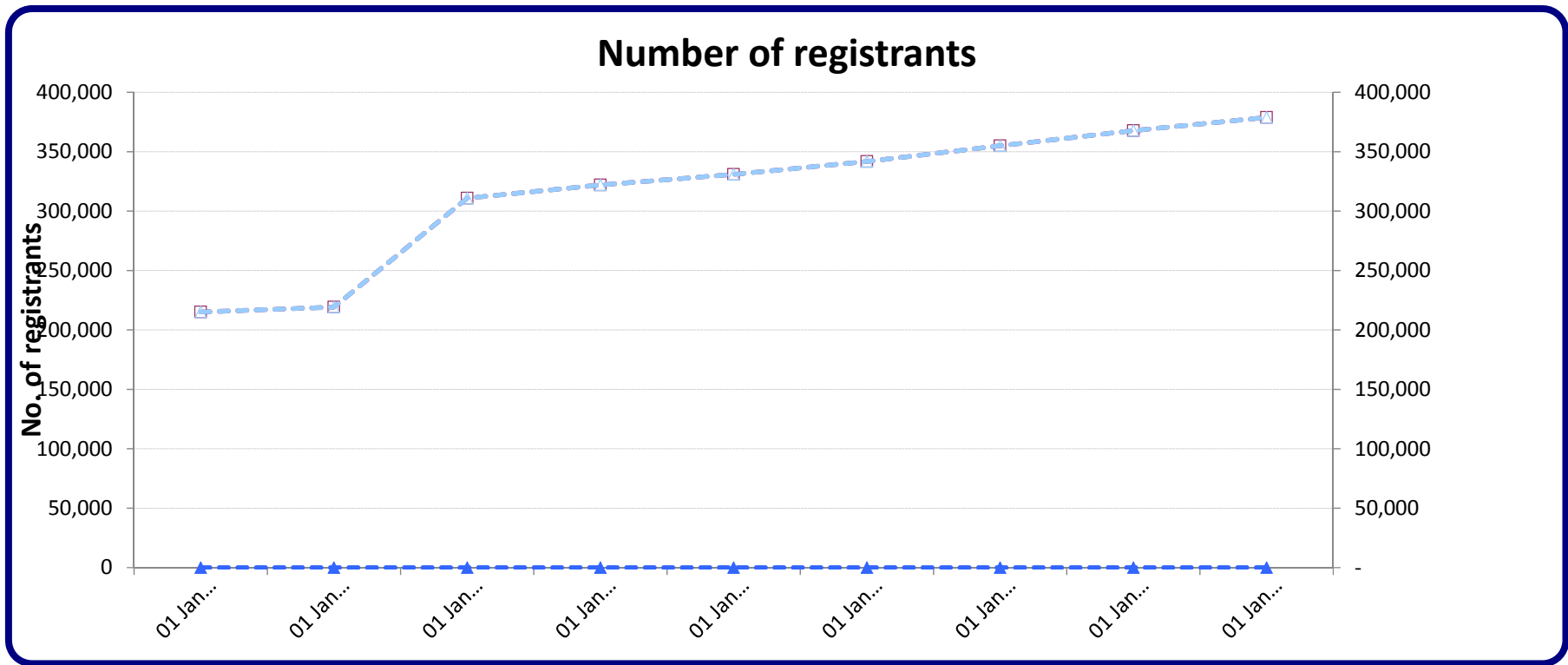
<b>Key assumptions</b>	<b>3</b>
<b>Number of registrants</b>	<b>4</b>
<b>New professions - transfer of voluntary registe</b>	<b>6</b>
<b>New registrations - UK route</b>	<b>8</b>
<b>New applications - International route</b>	<b>10</b>
<b>New registrations - International route</b>	<b>12</b>
<b>New applications - Grandparenting route</b>	<b>14</b>
<b>New registrations - Grandparenting route</b>	<b>16</b>
<b>Removed</b>	<b>18</b>
<b>Readmissions</b>	<b>20</b>
<b>Removed registrants less readmissions</b>	<b>22</b>
<b>Applications received for the register of visiting European Health</b>	<b>24</b>
<b>Appendices</b>	
<b>Appendix 1 List of acronyms</b>	<b>26</b>
<b>Appendix 2 UK route application &amp; registration monthly phasing</b>	<b>27 - 30</b>
<b>Appendix 3 International route application phasing (scrutiny fees)</b>	<b>31 - 34</b>
<b>Appendix 4 International route registration phasing</b>	<b>35 - 38</b>
<b>Appendix 5 Grandparenting model phasing based on two year win</b>	<b>39</b>
<b>Appendix 6 Profession renewal periods</b>	<b>40</b>

## Key assumptions

- Care workers are not included in this forecast as no decision has been made by government as to whether they will be regulated in England or on the type of regulation to be employed  
Notation; '0' indicates no records where route is viable. '-' indicates route is not viable  
Pale blue highlight indicates manual data input, for new or changing professions

# Drivers - Number of registrants

							Year 0	Year 1	Year 2
Model timeline label	Actuals	Actuals	Actuals	Actuals	Actuals	Actuals	Budget Fcast	LT Forecast	LT Forecast
Model period ending	31 Mar 11	31 Mar 12	31 Mar 13	31 Mar 14	31 Mar 15	31 Mar 16	31 Mar 17	31 Mar 18	31 Mar 19
AS	2,899	3,121	3,185	3,451	3,620	3,897	4,109	4,353	4,547
BS	22,627	21,886	22,402	21,901	22,640	22,154	22,889	23,359	24,026
CH	12,734	13,005	12,754	13,031	12,911	13,121	13,243	13,488	13,587
CS	4,621	4,665	4,847	4,930	5,296	5,376	5,634	5,827	6,067
DT	7,322	7,782	7,890	8,372	8,528	8,986	9,316	9,718	10,004
HAD	1,587	1,722	1,806	2,010	2,151	2,442	2,680	2,934	3,151
OT	32,126	31,946	33,717	34,145	36,128	36,272	37,759	38,810	40,187
ODP	10,313	10,929	11,246	11,881	12,182	12,811	13,230	13,763	14,143
OR	1,303	1,286	1,329	1,316	1,379	1,385	1,434	1,467	1,514
PA	16,782	17,913	19,373	20,100	21,185	22,380	23,918	25,145	26,546
PH	45,002	46,516	46,842	48,908	49,685	51,662	53,070	54,895	56,073
PO	901	893	936	948	1,011	1,005	1,052	1,086	1,129
PYL	17,165	17,845	19,341	19,908	20,996	21,470	22,386	23,044	23,896
RA	26,615	26,480	27,820	28,058	29,786	30,244	31,672	32,714	34,010
SL	13,086	13,173	14,033	14,129	14,992	15,199	15,965	16,539	17,243
SW	-	-	83,421	88,949	88,397	93,341	96,666	100,547	102,692
<b>Existing professions</b>	215,083	219,162	310,942	322,037	330,887	341,745	355,023	367,688	378,816
HMTCM	-	-	-	-	-	-	-	-	-
PHS	-	-	-	-	-	-	-	-	-
<b>New professions</b>	-	-	-	-	-	-	-	-	-
<b>All professions</b>	215,083	219,162	310,942	322,037	330,887	341,745	355,023	367,688	378,816



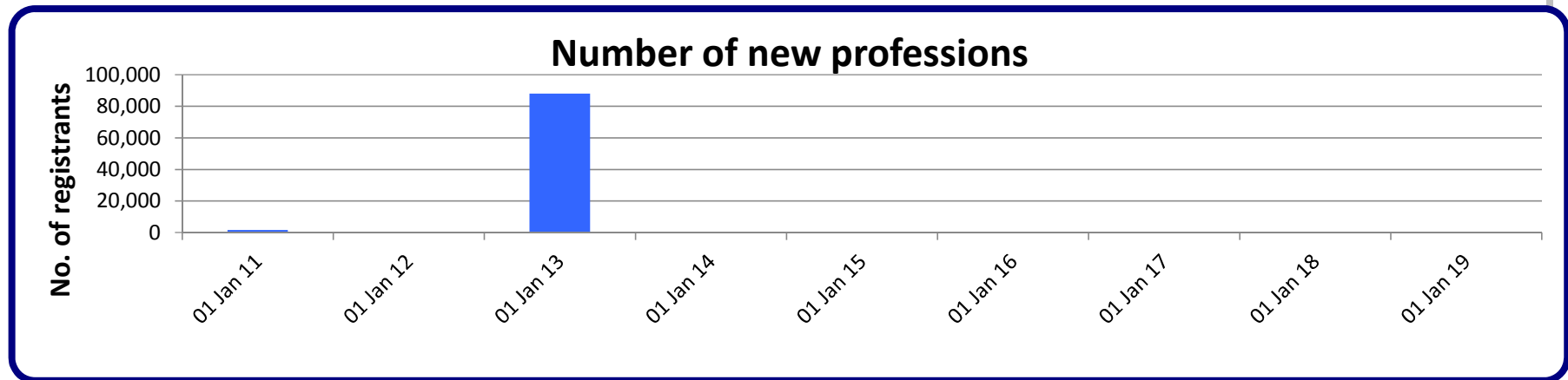
**Key assumptions**

- All figures on 31st March, Financial Year End for HCPC.
- These figures are calculated from;
  - Number of registrants
  - New registrations - UK route
  - New professions - transfer of voluntary register
  - New registrations - International route
  - New registrations - Grandparenting route
  - Removed registrations
  - Readmitted registration

# New professions - register trf

New professions - transfer of voluntary or existing register

	Actuals						Year 0	Year 1	Year 2	Year
Model timeline label	Actuals	Actuals	Actuals	Actuals	Actuals	Actuals	Budget Fcast	LT Forecast	LT Forecast	
Model period ending	31 Mar 11	31 Mar 12	31 Mar 13	31 Mar 14	31 Mar 15	31 Mar 16	31 Mar 17	31 Mar 18	31 Mar 19	
HAD	1,573	-	-	-	-	-	-	-	-	
PYL	-	-	-	-	-	-	-	-	-	
SW	-	-	88,059	-	-	-	-	-	-	
PHS	-	-	-	-	-	-	-	-	-	
HMTCM	-	-	-	-	-	-	-	-	-	
<b>Total</b>	<b>1,573</b>	<b>-</b>	<b>88,059</b>	<b>-</b>	<b>-</b>	<b>-</b>	<b>-</b>	<b>-</b>	<b>-</b>	



\*84,000 Social workers were Reforecasted to be transferred. However, 88,059 records were received from the GSCC. Of the 88,059 that were transferred, 8425 chose not to renew

**Key assumptions**

- No new professions currently scheduled
-

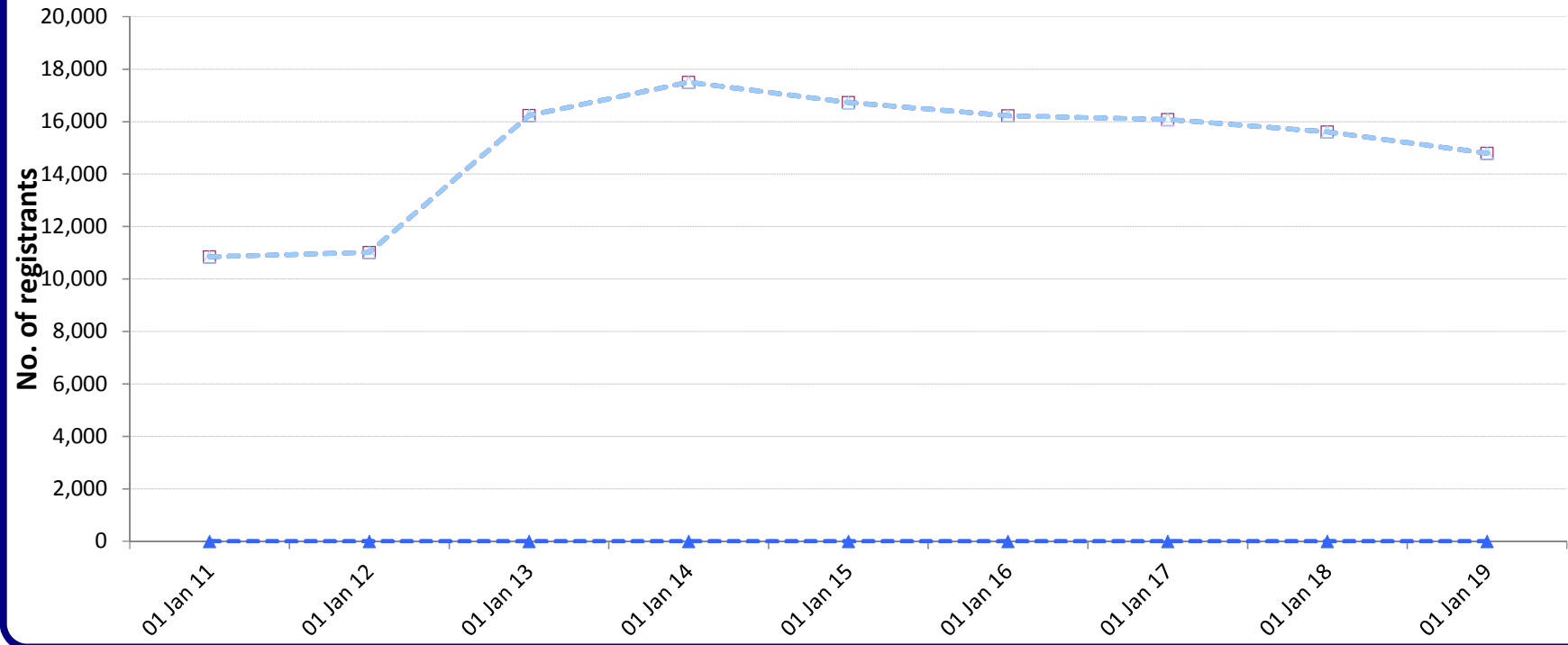


## UK registrations

	Actuals						Year 0	Year 1	Year 2	Year 4
<b>Model timeline label</b>	Actuals	Actuals	Actuals	Actuals	Actuals	Actuals	Budget Fcast	LT Forecast	LT Forecast	
<b>Model period ending</b>	31 Mar 11	31 Mar 12	31 Mar 13	31 Mar 14	31 Mar 15	31 Mar 16	31 Mar 17	31 Mar 18	31 Mar 19	
AS	248	251	248	287	328	287	283	280	276	
BS	800	752	687	819	738	775	765	755	745	
CH	406	369	354	385	377	356	351	347	342	
CS	228	271	212	340	362	285	281	278	274	
DT	442	420	422	453	397	419	414	408	403	
HAD	83	151	209	209	222	271	267	264	261	
OT	1,660	1,573	1,684	1,802	1,710	1,642	1,621	1,600	1,579	
ODP	611	674	683	701	641	673	664	656	647	
OR	49	41	58	71	68	62	61	60	60	
PA	1,148	1,529	1,624	1,207	1,140	1,398	1,380	1,362	1,344	
PH	1,947	1,803	1,862	1,968	1,834	1,840	1,816	1,792	1,769	
PO	36	32	45	63	55	50	49	49	48	
PYL	1,274	1,224	1,150	1,071	1,052	1,027	1,014	1,000	987	
RA	1,193	1,201	1,288	1,393	1,420	1,366	1,348	1,331	1,313	
SL	723	725	816	694	800	778	768	758	748	
SW	-	-	4,892	6,040	5,586	5,000	5,000	4,675	4,000	
<b>Existing professions</b>	10,848	11,016	16,234	17,503	16,730	16,229	16,083	15,614	14,797	
HMTCM	-	-	-	-	-	-	-	-	-	
PHS	-	-	-	-	-	-	-	-	-	
<b>New professions</b>	-	-	-	-	-	-	-	-	-	
<b>All professions</b>	10,848	11,016	16,234	17,503	16,730	16,229	16,083	15,614	14,797	

Negative values represent multiple removal and readmission for individuals, or readmissions from earlier removal cycles

## Number of registrants



### Key assumptions

- UK route registrations based on historic data projected forward, with additional 10% fall in Year 0 for most professions.
- 2010/11 to 2014/15: generic 4% fall p/a (excluding SW profession).
- Figures for all new professions are estimated based on DH data, unless otherwise specified.
- Social Work students graduating will fall by 10% starting 2016/17 following decrease in numbers of programmes
-

## International applications

							Year 0	Year 1	Year 2	Year
<b>Model timeline label</b>	Actuals	Actuals	Actuals	Actuals	Actuals	Actuals	Budget Fcast	LT Forecast	LT Forecast	
<b>Model period ending</b>	31 Mar 11	31 Mar 12	31 Mar 13	31 Mar 14	31 Mar 15	31 Mar 16	31 Mar 17	31 Mar 18	31 Mar 19	
AS	15	16	11	9	20	7	6	5	5	
BS	220	143	172	191	355	258	209	188	169	
CH	19	21	19	20	49	42	34	31	28	
CS	38	33	42	47	89	50	41	36	33	
DT	112	110	105	122	184	183	148	133	120	
HAD	7	6	7	22	33	25	20	18	16	
OT	324	258	256	260	417	340	275	248	223	
ODP	4	4	11	7	30	6	5	4	4	
OR	2	1	3	2	4	3	2	2	2	
PA	27	25	34	40	256	481	390	351	316	
PH	642	626	671	715	1,131	1,020	826	744	669	
PO	7	8	7	3	18	11	9	8	7	
PYL	191	124	152	150	310	226	183	165	148	
RA	320	299	235	301	662	600	486	437	394	
SL	137	153	121	153	230	171	139	125	112	
SW	-	-	218	306	681	622	386	347	312	
<b>Existing professions</b>	2,065	1,827	2,064	2,348	4,469	4,045	3,158	2,842	2,558	
HMTCM	-	-	-	-	-	-	-	-	-	
PHS	-	-	-	-	-	-	-	-	-	
<b>New professions</b>	-	-	-	-	-	-	-	-	-	
<b>All professions</b>	2,065	1,827	2,064	2,348	4,469	4,045	3,158	2,842	2,558	

Negative values represent multiple removal and readmission for individuals, or readmissions from earlier removal cycles

### **Key assumptions**

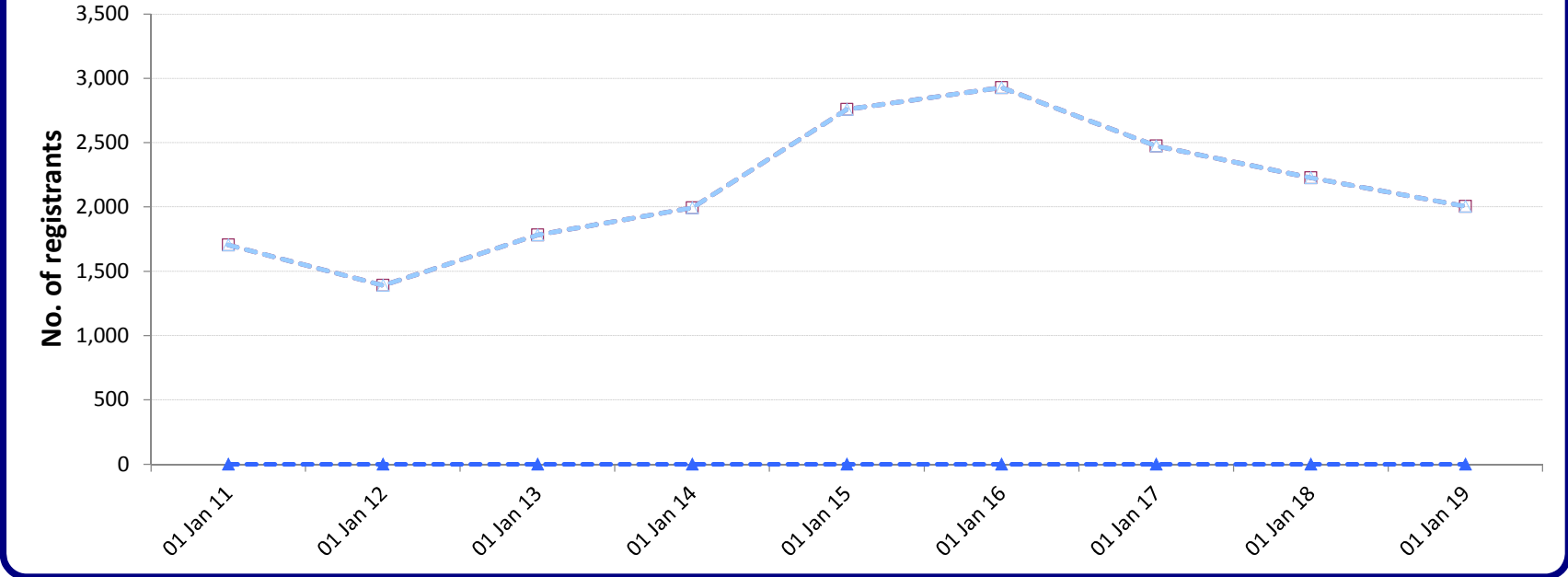
- Only applications where the scrutiny fee is retained are counted
- Applicants applying in one financial year may be registered in subsequent years
- Some applications will not result in registration
- Some initial assessments will result in POA or Aptitude Tests which may occur much later
- EU Temporary and Occasional applicants are not included here (see page 24)
- SW project 200 applications from Year 1, then decline
- 10% decrease in Intl applications per year on last actuals assumed from 2016-17 FY onwards

## International registrations

							Year 0	Year 1	Year 2
Model timeline label	Actuals	Actuals	Actuals	Actuals	Actuals	Actuals	Budget Fcast	LT Forecast	LT Forecast
Model period ending	31 Mar 11	31 Mar 12	31 Mar 13	31 Mar 14	31 Mar 15	31 Mar 16	31 Mar 17	31 Mar 18	31 Mar 19
AS	15	10	14	8	14	7	6	6	5
BS	202	122	157	157	224	213	192	173	155
CH	18	14	16	20	23	37	33	30	27
CS	25	25	34	30	45	34	31	28	25
DT	88	78	101	85	121	107	96	87	78
HAD	5	5	8	13	22	21	19	17	15
OT	289	217	252	259	268	255	230	207	186
ODP	3	3	2	4	9	12	11	10	9
OR	1	2	1	-	3	2	2	2	1
PA	25	20	24	27	160	424	382	343	309
PH	501	464	641	613	784	695	626	563	507
PO	6	7	6	4	6	8	7	6	6
PYL	127	91	96	129	150	130	117	105	95
RA	270	216	241	269	388	425	383	344	310
SL	130	116	139	144	153	167	150	135	122
SW	-	-	51	232	388	391	192	173	156
<b>Existing professions</b>	<b>1,705</b>	<b>1,390</b>	<b>1,783</b>	<b>1,994</b>	<b>2,758</b>	<b>2,928</b>	<b>2,475</b>	<b>2,228</b>	<b>2,005</b>
HMTCM	-	-	-	-	-	-	-	-	-
PHS	-	-	-	-	-	-	-	-	-
<b>New professions</b>	<b>-</b>	<b>-</b>	<b>-</b>	<b>-</b>	<b>-</b>	<b>-</b>	<b>-</b>	<b>-</b>	<b>-</b>
<b>All professions</b>	<b>1,705</b>	<b>1,390</b>	<b>1,783</b>	<b>1,994</b>	<b>2,758</b>	<b>2,928</b>	<b>2,475</b>	<b>2,228</b>	<b>2,005</b>

Negative values represent multiple removal and readmission for individuals, or readmissions from earlier removal cycles

### Number of registrants



**Key assumptions**

- Reforecast year reset to last financial years "Actuals" each year
- 10% drop per year in new International registrants projected forward from last actuals.
- Link between application date and registration date variable between 1 month and 8 months assuming POA/TOC is not required
- 
- 
- 
-

# Grandparents applications

							Year 0	Year 1	Year 2	Year
Model timeline label	Actuals	Actuals	Actuals	Actuals	Actuals	Actuals	Budget Fcast	LT Forecast	LT Forecast	
Model period ending	31 Mar 11	31 Mar 12	31 Mar 13	31 Mar 14	31 Mar 15	31 Mar 16	31 Mar 17	31 Mar 18	31 Mar 19	
AS	-	-	-	-	-	-	-	-	-	
BS	-	-	-	-	-	-	-	-	-	
CH	-	-	-	-	-	-	-	-	-	
CS	-	-	-	-	-	-	-	-	-	
DT	-	-	-	-	-	-	-	-	-	
HAD	-	-	-	-	-	-	-	-	-	
OT	-	-	-	-	-	-	-	-	-	
ODP	-	-	-	-	-	-	-	-	-	
OR	-	-	-	-	-	-	-	-	-	
PA	-	-	-	-	-	-	-	-	-	
PH	-	-	-	-	-	-	-	-	-	
PO	-	-	-	-	-	-	-	-	-	
PYL	96	337	265	-	-	-	-	-	-	
RA	-	-	-	-	-	-	-	-	-	
SL	-	-	-	-	-	-	-	-	-	
SW	-	-	-	-	-	-	-	-	-	
<b>Existing professions</b>	96	337	265	0	0	0	0	0	0	
HMTCM	-	-	-	-	-	-	-	-	-	
PHS	-	-	-	-	-	-	-	-	-	
<b>New professions</b>	-	-	-	-	-	-	-	-	-	
<b>All professions</b>	96	337	265	-	-	-	-	-	-	

Negative values represent multiple removal and readmission for individuals, or readmissions from earlier removal cycles

### **Key assumptions**

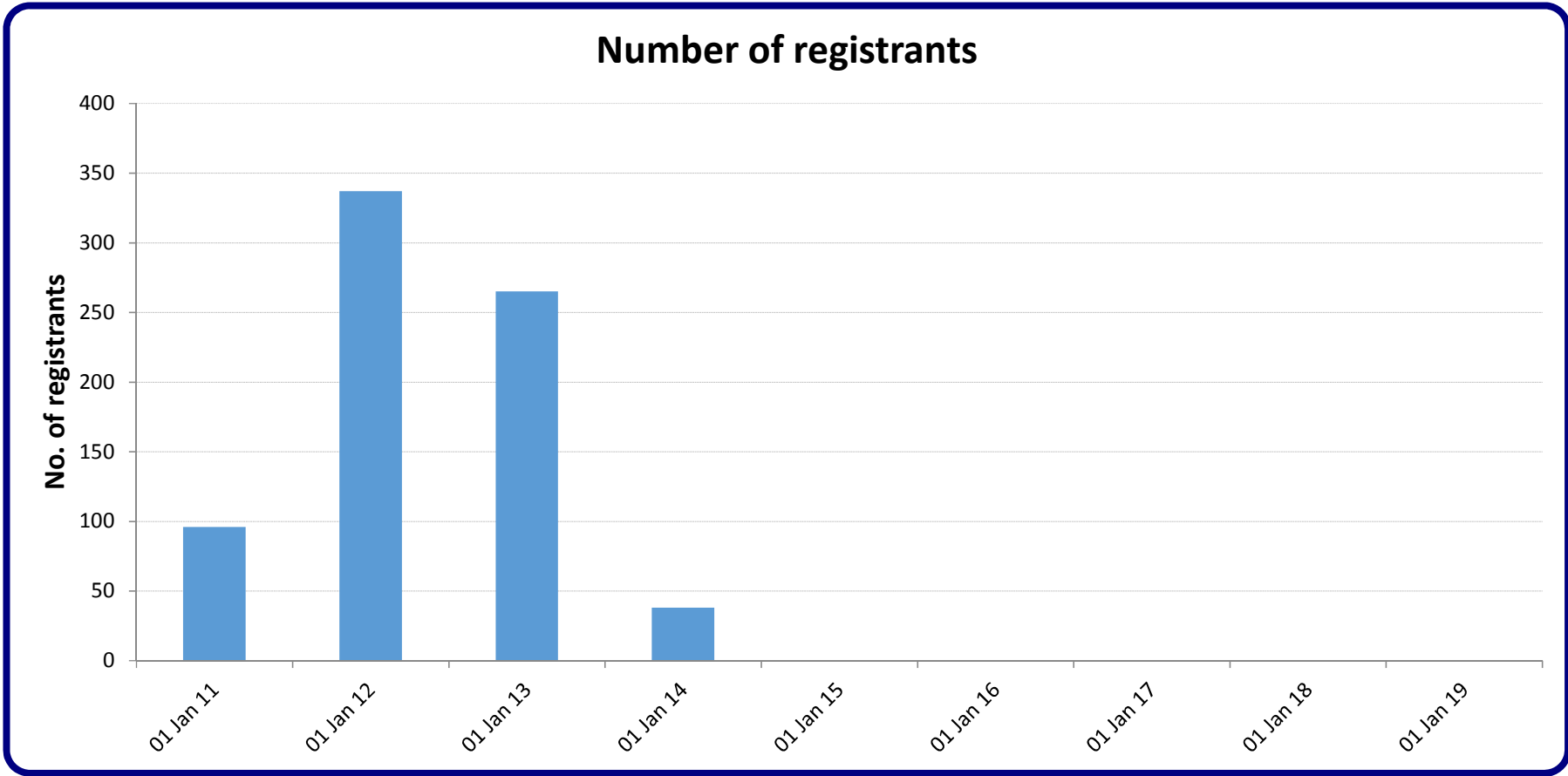
- Grandparenting route is typically run for a two year period starting with the opening of a new professional register
- Where multiple modalities or divisions occur, a registration resulting from an existing register may have additional modalities or divisions applied via the Grandparenting route
- However, the number of registrations does not increase when the applicant successfully applies, but has an additional modality or division listed.
- Predictions of applicants are difficult to delimit
- Phasing of applicants via the grandparenting route are based on previous trends but professional influences may cause large variances from the forecast



# Grandparenting registration

	Actuals						Year 0	Year 1	Year 2	Year
Model timeline label	Actuals	Actuals	Actuals	Actuals	Actuals	Actuals	Budget Fcast	LT Forecast	LT Forecast	
Model period ending	31 Mar 11	31 Mar 12	31 Mar 13	31 Mar 14	31 Mar 15	31 Mar 16	31 Mar 17	31 Mar 18	31 Mar 19	
AS	-	-	-	-	-	-	-	-	-	
BS	-	-	-	-	-	-	-	-	-	
CH	-	-	-	-	-	-	-	-	-	
CS	-	-	-	-	-	-	-	-	-	
DT	-	-	-	-	-	-	-	-	-	
HAD	-	-	-	-	-	-	-	-	-	
OT	-	-	-	-	-	-	-	-	-	
ODP	-	-	-	-	-	-	-	-	-	
OR	-	-	-	-	-	-	-	-	-	
PA	-	-	-	-	-	-	-	-	-	
PH	-	-	-	-	-	-	-	-	-	
PO	-	-	-	-	-	-	-	-	-	
PYL	96	337	265	38	-	-	-	-	-	
RA	-	-	-	-	-	-	-	-	-	
SL	-	-	-	-	-	-	-	-	-	
SW	-	-	-	-	-	-	-	-	-	
<b>Existing professions</b>	96	337	265	38	0	0	0	0	0	
HMTCM	-	-	-	-	-	-	-	-	-	
PHS	-	-	-	-	-	-	-	-	-	
<b>New professions</b>	-	-	-	-	-	-	-	-	-	
<b>All professions</b>	96	337	265	38	-	-	-	-	-	

Negative values represent multiple removal and readmission for individuals, or readmissions from earlier removal cycles



- Regular two year grandparenting period assumed for any grandparenting professions.

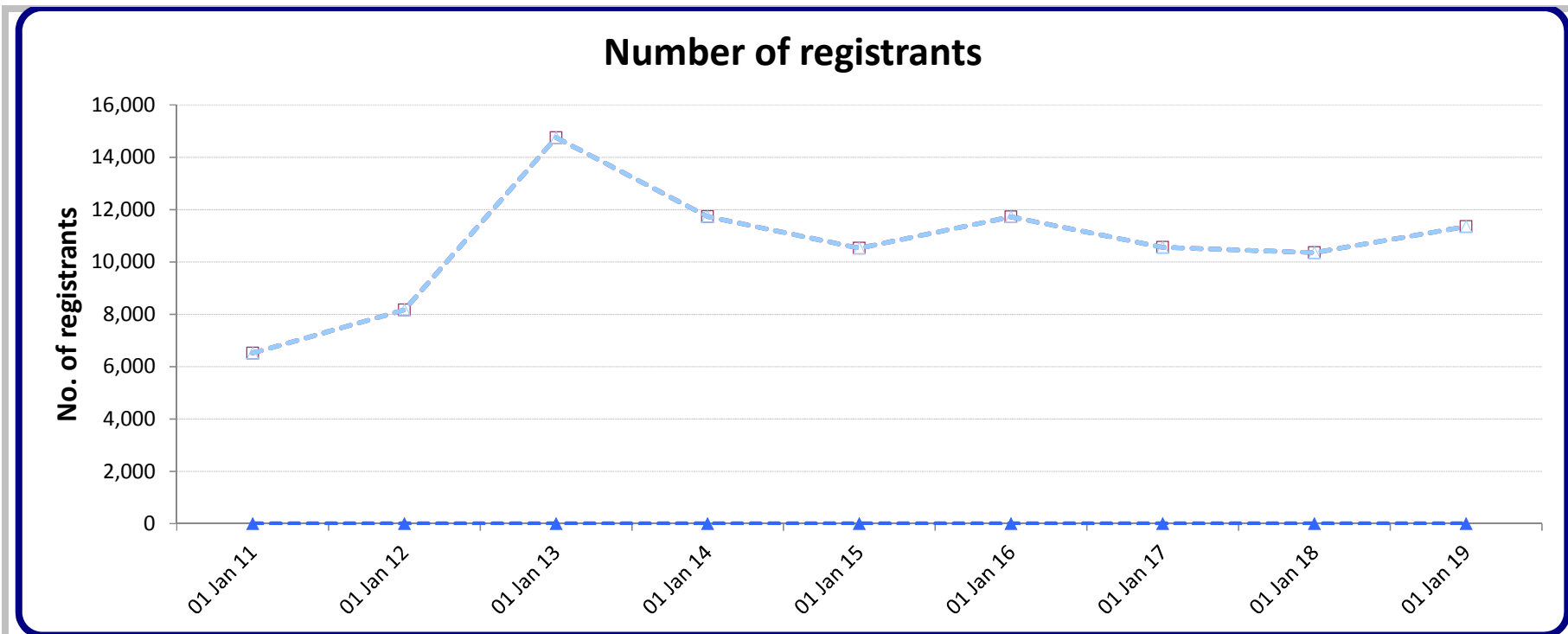
-

-

## Removal registrations

							Year 0	Year 1	Year 2	Year
<b>Model timeline label</b>	Actuals	Actuals	Actuals	Actuals	Actuals	Actuals	Budget Fcast	LT Forecast	LT Forecast	
<b>Model period ending</b>	31 Mar 11	31 Mar 12	31 Mar 13	31 Mar 14	31 Mar 15	31 Mar 16	31 Mar 17	31 Mar 18	31 Mar 19	
AS	209	73	232	85	257	52	156	82	174	
BS	404	1,106	472	1,132	453	1,702	443	916	467	
CH	800	221	742	323	371	269	525	265	540	
CS	80	166	78	248	87	285	108	225	117	
DT	315	77	370	207	290	108	359	186	389	
HAD	67	33	152	50	102	26	98	54	117	
OT	431	1,813	485	1,731	401	2,224	725	1,510	776	
ODP	645	224	319	293	310	180	512	265	551	
OR	16	49	22	67	27	66	28	57	29	
PA	214	336	256	1,017	295	803	448	957	503	
PH	2,686	1,030	2,415	1,214	1,722	846	2,066	1,061	2,196	
PO	14	47	21	48	10	75	20	42	22	
PYL	87	1,117	132	999	211	973	429	895	461	
RA	339	1,198	445	1,426	388	1,572	605	1,267	654	
SL	207	674	186	727	223	934	304	639	331	
SW	-	-	8,425	2,164	5,382	1,609	3,734	1,933	4,022	
<b>Existing professions</b>	6,514	8,164	14,752	11,731	10,529	11,724	10,560	10,355	11,348	
HMTCM	-	-	-	-	-	-	-	-	-	
PHS	-	-	-	-	-	-	-	-	-	
<b>New professions</b>	-	-	-	-	-	-	-	-	-	
<b>All professions</b>	6,514	8,164	14,752	11,731	10,529	11,724	10,560	10,355	11,348	

Negative values represent multiple removal and readmission for individuals, or readmissions from earlier removal cycles



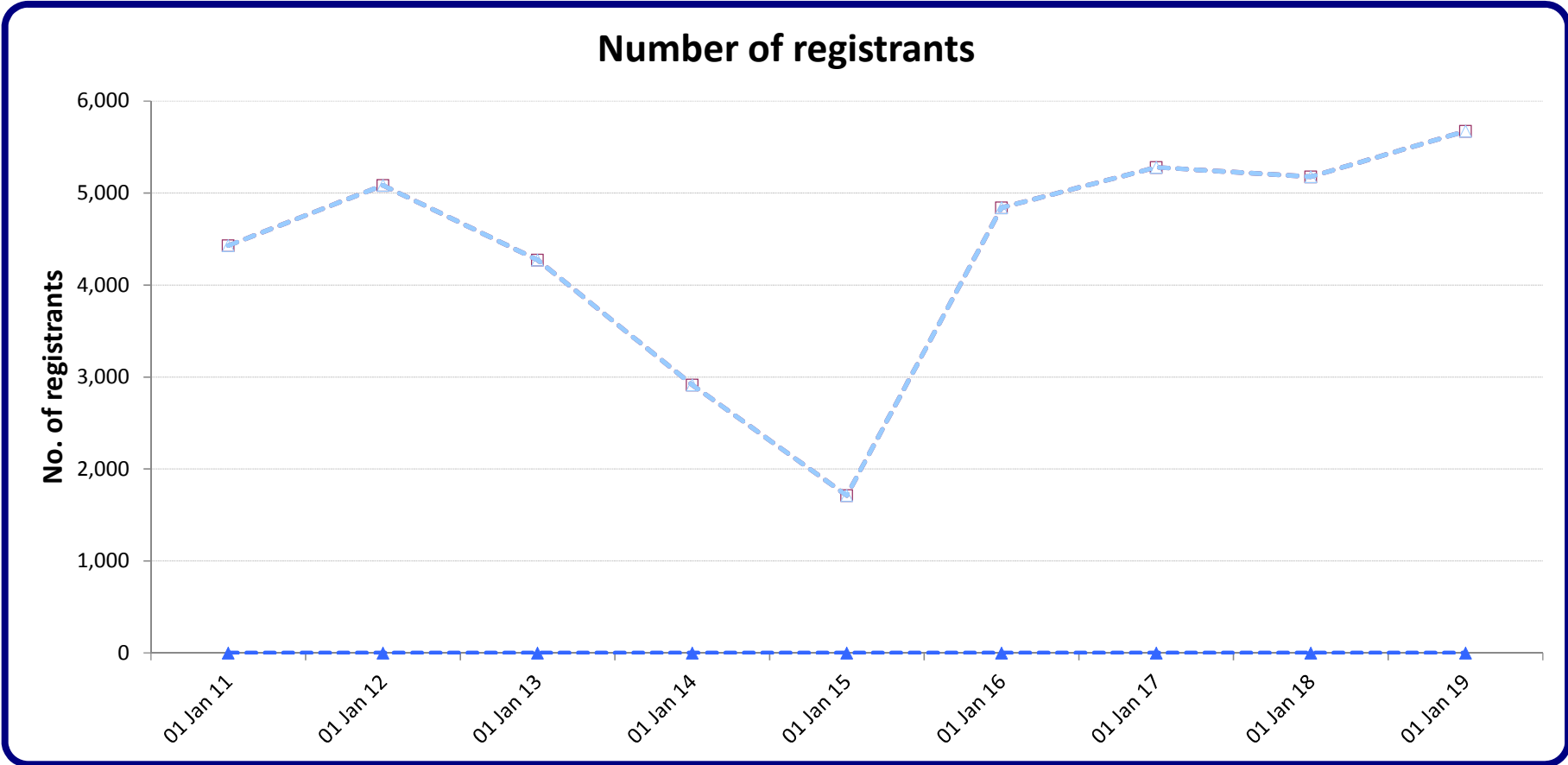
**Key assumptions**

- Renewal years are highlighted.
- Removal figures include voluntary removal, deceased registrants and struck-off registrants.
- 2% of professions removed in years where they are not in renewal; 4% of professions removed in years where they are in renewal.
- For new professions 5% removed in years where they are not in renewal; 10% of new professions removed in years where they are in renewal.
- End of cycle removal include 1% to account for retiring registrants and CPD audit triggered removals.
- PYL profession follows usual removal pattern after 3rd year of registration with HCPC
- SocWok profession follows usual removal pattern after 3rd year of registration with HCPC
- Figure in highlight reflects the end of registration period removal
- No highlight = intermediate and other removals outside the end of cycle Removal process

# Readmission registrations

							Year 0	Year 1	Year 2
Model timeline label	Actuals	Actuals	Actuals	Actuals	Actuals	Actuals	Budget Fcast	LT Forecast	LT Forecast
Model period ending	31 Mar 11	31 Mar 12	31 Mar 13	31 Mar 14	31 Mar 15	31 Mar 16	31 Mar 17	31 Mar 18	31 Mar 19
AS	193	40	96	19	87	36	78	41	87
BS	45	728	189	175	48	453	222	458	234
CH	791	159	430	52	69	129	262	132	270
CS	3	158	43	26	9	106	54	113	58
DT	42	99	57	17	38	85	180	93	194
HAD	4	20	52	16	18	22	49	27	59
OT	73	1,096	83	289	103	723	363	755	388
ODP	593	141	274	85	79	122	256	132	275
OR	1	43	1	21	2	28	14	29	15
PA	58	123	5	210	52	424	224	478	251
PH	2,514	586	1,801	169	303	497	1,033	531	1,098
PO	1	30	11	13	1	20	10	21	11
PYL	44	501	10	280	28	420	215	448	230
RA	57	904	121	194	86	596	302	633	327
SL	12	456	21	122	21	300	152	319	165
SW	-	-	1,080	1,228	768	884	1,867	967	2,011
<b>Existing professions</b>	4,431	5,084	4,274	2,916	1,712	4,843	5,280	5,177	5,674
HMTCM	-	-	-	-	-	-	-	-	-
PHS	-	-	-	-	-	-	-	-	-
<b>New professions</b>	-	-	-	-	-	-	-	-	-
<b>All professions</b>	4,431	5,084	4,274	2,916	1,712	4,843	5,280	5,177	5,674

Negative values represent multiple removal and readmission for individuals, or readmissions from earlier removal cycles  
 Highlighted figures reflect readmissions within 6 months of removal



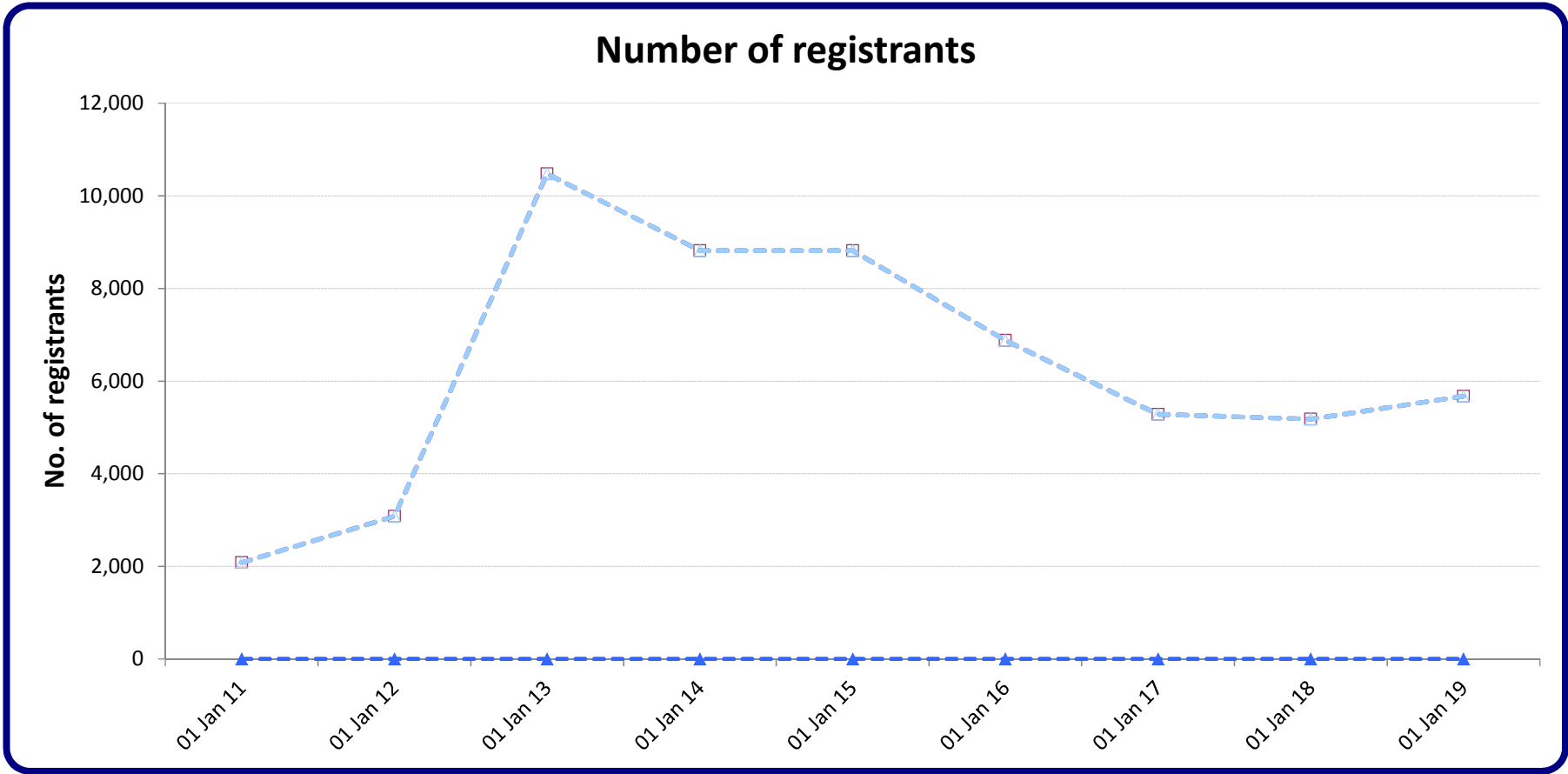
- Renewal years are shown highlighted
- 1% of professions readmit in years where they are not in renewal; 2% of professions readmit in years where they are in renewal. This is based on previous data that indicates that 50% of those removed do not readmit. Current profns only Estimate used for first year for new professions and then calculated using formula above.
- Between 5 and 20% of removed registrants readmit within 30 days of end of cycle removals, and do not pay a readmission fee
- This model does not include those Returning to Practice
- For very small professions, rounding issues are impact %age calculations to make arithmetic errors apparent
- This model does not include those Returning to Practice
- Slight percentage adjustments to ensure calculations balance

## Removed less Readmission

							Year 0	Year 1	Year 2	Year
Model timeline label	Actuals	Actuals	Actuals	Actuals	Actuals	Actuals	Budget Fcast	LT Forecast	LT Forecast	
Model period ending	31 Mar 11	31 Mar 12	31 Mar 13	31 Mar 14	31 Mar 15	31 Mar 16	31 Mar 17	31 Mar 18	31 Mar 19	
AS	16	33	136	66	170	16	78	41	87	
BS	359	378	283	957	405	1,249	222	458	234	
CH	9	62	312	271	302	140	262	132	270	
CS	77	8	35	222	78	179	54	113	58	
DT	273	(22)	313	190	252	23	180	93	194	
HAD	63	13	100	34	84	4	49	27	59	
OT	358	717	402	1,442	298	1,501	363	755	388	
ODP	52	83	45	208	231	58	256	132	275	
OR	15	6	21	46	25	38	14	29	15	
PA	156	213	251	807	243	379	224	478	251	
PH	172	444	614	1,045	1,419	349	1,033	531	1,098	
PO	13	17	10	35	9	55	10	21	11	
PYL	43	616	122	719	183	553	215	448	230	
RA	282	294	324	1,232	302	976	302	633	327	
SL	195	218	165	605	202	634	152	319	165	
SW	-	-	7,345	936	4,614	725	1,867	967	2,011	
<b>Existing professions</b>	2,083	3,080	10,478	8,815	8,817	6,881	5,280	5,177	5,674	
HMTCM	-	-	-	-	-	-	-	-	-	
PHS	-	-	-	-	-	-	-	-	-	
<b>New professions</b>	-	-	-	-	-	-	-	-	-	
<b>All professions</b>	2,083	3,080	10,478	8,815	8,817	6,881	5,280	5,177	5,674	

Negative values represent multiple removal and readmission for individuals, or readmissions from earlier removal cycles

Calculated by subtracting readmissions number from lapsed number in year.



- Deceased registrants, those retiring, emigrating and others permanently leaving the register (voluntary deregistration).



# Visiting professional

							Year 0	Year 1	Year 2	Year
Model timeline label	Actuals	Actuals	Actuals	Actuals	Actuals	Actuals	Budget Fcast	LT Forecast	LT Forecast	
Model period ending	31 Mar 2011	31 Mar 2012	31 Mar 2013	31 Mar 2014	31 Mar 2015	31 Mar 2016	31 Mar 2017	31 Mar 2018	31 Mar 2019	
AS		x	x	2	2	1				
BS		x	x	59	25	22				
CH		x	x	9		2				
CS		x	x	7		1				
DT		x	x	34	6	8				
HAD		x	x	2	6	6				
OT		x	x	40	10	8				
ODP		x	x	3	1	1				
OR		x	x	5	1	3				
PA		x	x	7	4	4				
PH		x	x	221	77	78				
PO		x	x	2	1	1				
PYL		x	x	31	18	19				
RA		x	x	141	174	205				
SL		x	x	29	13	10				
SW		x	x	22	13	7				
<b>Existing professions</b>	0	0	0	614	351	376	0	0	0	
HMTCM	-	-	-	-	-	-	-	-	-	-
PHS	-	-	-	-	-	-	-	-	-	-
<b>New professions</b>	-	-	-	-	-	-	-	-	-	-
<b>All professions</b>	-	-	-	614	351	376	-	-	-	-

# Appendices

## List of acronyms

AS	Arts therapists
BS	Biomedical scientists
CH	Chiroprodists and podiatrists
CS	Clinical scientists
DH	Dept of Health
DT	Dietitian
HAD	Hearing aid dispensers
HMTCM	Herbal Medicine and Traditional Chinese Medicine practitioners
OT	Occupational therapists
ODP	Operating department practitioners
OR	Orthoptists
PA	Paramedics
PH	Physiotherapists
PHS	Public Health Specialists
PO	Prosthetists and orthotists
PYL	Psychologists
RA	Radiographers
SL	Speech and language therapists
SW	Social Workers in England
BPS	British Psychological Society
HESA	Higher Education Statistics Authority
CFWI	Centre for Workforce Intelligence

# UK Application cycle

Month name	April	May	June	July	August	September	October	November	December	January	February	March
Month number	4	5	6	7	8	9	10	11	12	1	2	3

## UK route application & registration monthly phasing - 1

### AS

	April	May	June	July	August	September	October	November	December	January	February	March
Financial year ending												
2009	-	-	-	-	-	-	-	-	-	-	-	-
2010	17	13	16	16	26	28	23	26	12	9	11	11
2011	16	18	12	20	25	38	23	23	17	21	18	17
2012	16	9	9	20	47	26	39	33	19	11	17	5
2013	15	6	10	16	65	27	30	28	23	7	14	7
2014	8	9	12	14	52	44	70	28	13	19	9	9
Mean of AS	12	10	9	18	51	46	59	40	18	15	9	13
Monthly weighting AS	0.0399	0.0343	0.0310	0.0609	0.1694	0.1528	0.1971	0.1329	0.0598	0.0509	0.0288	0.0421

### BS

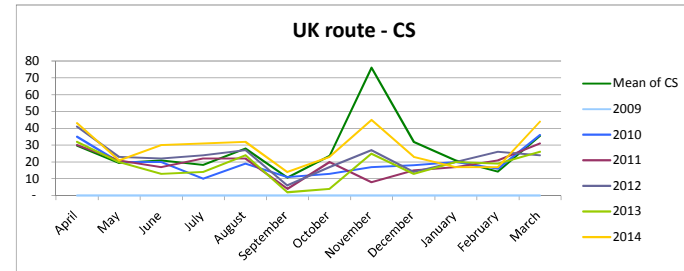
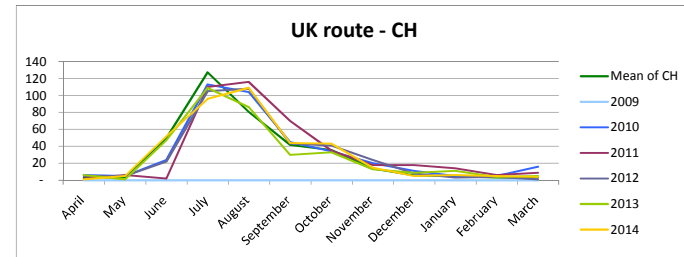
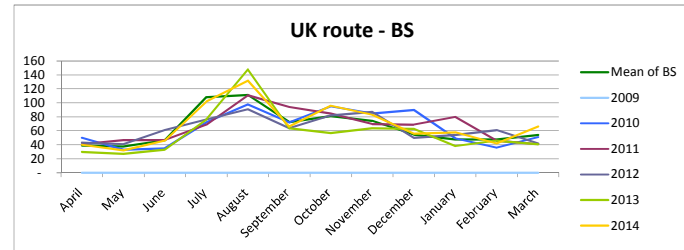
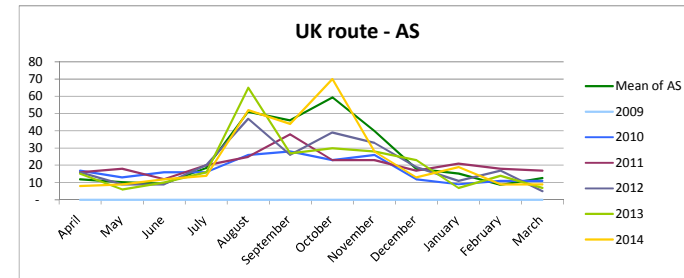
	April	May	June	July	August	September	October	November	December	January	February	March
Financial year ending												
2009	-	-	-	-	-	-	-	-	-	-	-	-
2010	50	33	35	72	98	72	95	85	90	49	36	51
2011	41	47	47	69	111	94	85	70	69	80	46	41
2012	43	41	61	76	91	64	82	87	50	54	61	42
2013	30	27	33	76	148	64	57	64	63	38	46	41
2014	40	32	46	102	132	66	96	83	56	58	42	66
Mean of BS	39	38	46	108	111	72	81	74	55	48	48	54
Monthly weighting BS	0.0503	0.0486	0.0598	0.1397	0.1436	0.0933	0.1049	0.0959	0.0705	0.0615	0.0619	0.0701

### CH

	April	May	June	July	August	September	October	November	December	January	February	March
Financial year ending												
2009	-	-	-	-	-	-	-	-	-	-	-	-
2010	6	5	24	113	104	45	34	20	11	5	5	16
2011	2	6	2	110	116	70	35	18	18	14	6	9
2012	5	5	22	105	108	43	41	24	8	3	4	1
2013	6	1	47	109	86	30	33	13	9	11	4	5
2014	1	5	52	96	109	44	43	15	5	6	5	4
Mean of CH	3	4	50	127	80	42	36	14	6	5	3	3
Monthly weighting CH	0.0090	0.0098	0.1334	0.3420	0.2158	0.1119	0.0958	0.0367	0.0152	0.0125	0.0090	0.0090

### CS

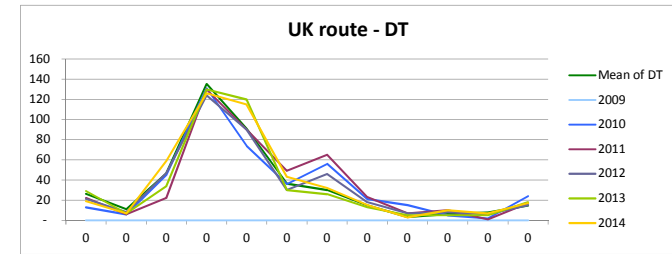
	April	May	June	July	August	September	October	November	December	January	February	March
Financial year ending												
2009	-	-	-	-	-	-	-	-	-	-	-	-
2010	35	20	20	10	19	11	13	17	18	20	16	36
2011	30	21	17	22	22	4	20	8	15	17	21	31
2012	41	23	22	24	27	6	17	27	14	20	26	24
2013	32	20	13	14	24	2	4	25	13	20	19	26
2014	43	21	30	31	32	14	23	45	23	17	17	44
Mean of CS	30	19	21	18	28	11	24	76	32	21	14	35
Monthly weighting CS	0.0901	0.0587	0.0638	0.0557	0.0850	0.0324	0.0719	0.2308	0.0972	0.0638	0.0435	0.1073



UK route application & registration monthly phasing - 2

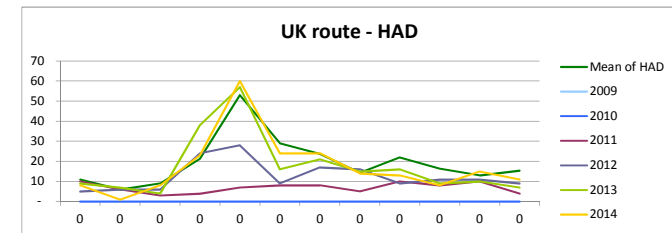
DT

Financial year ending	-	-	-	-	-	-	-	-	-	-	-	-
2009	-	-	-	-	-	-	-	-	-	-	-	-
2010	13	6	45	131	74	36	56	21	15	5	2	24
2011	22	6	22	130	90	49	65	23	7	10	1	17
2012	21	8	47	124	90	30	46	18	7	8	6	15
2013	29	7	34	130	120	30	26	13	5	5	5	18
2014	19	7	59	126	115	43	32	15	3	10	7	17
Mean of	26	11	47	135	91	36	30	15	3	6	8	15
Monthly \	0.0622	0.0260	0.1102	0.3197	0.2150	0.0858	0.0709	0.0346	0.0079	0.0150	0.0181	0.0346



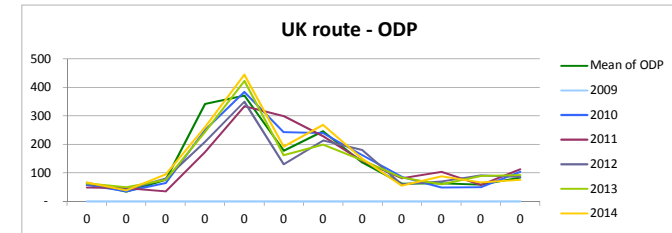
HAD

Month ph	-	-	-	-	-	-	-	-	-	-	-	-
2009	-	-	-	-	-	-	-	-	-	-	-	-
2010	-	-	-	-	-	-	-	-	-	-	-	-
2011	10	6	3	4	7	8	8	5	10	8	10	4
2012	5	6	6	24	28	9	17	16	9	11	11	9
2013	9	7	4	38	57	16	21	15	16	9	10	7
2014	8	1	8	23	60	24	24	14	13	8	15	11
Mean of	11	6	9	21	53	29	24	14	22	16	13	15
Monthly \	0.0470	0.0256	0.0385	0.0912	0.2265	0.1239	0.1011	0.0613	0.0940	0.0698	0.0556	0.0655



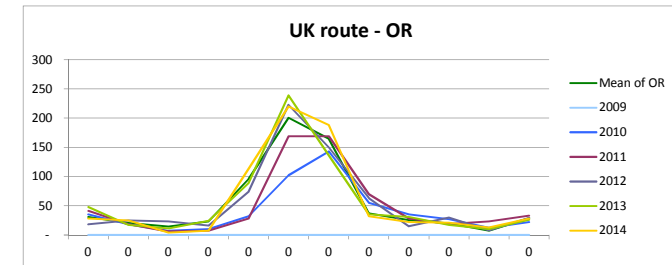
ODP

Month ph	-	-	-	-	-	-	-	-	-	-	-	-
2009	-	-	-	-	-	-	-	-	-	-	-	-
2010	57	36	64	251	384	243	239	162	86	49	50	103
2011	49	46	35	173	334	299	228	142	81	104	57	112
2012	61	41	80	209	350	131	214	180	60	70	91	86
2013	63	50	75	244	423	162	199	144	83	60	89	92
2014	66	39	94	261	445	192	269	150	55	88	67	76
Mean of	65	35	76	342	371	178	247	136	62	63	58	83
Monthly \	0.0379	0.0202	0.0441	0.1994	0.2163	0.1038	0.1438	0.0793	0.0360	0.0367	0.0340	0.0484



OR

Month ph	-	-	-	-	-	-	-	-	-	-	-	-
2009	-	-	-	-	-	-	-	-	-	-	-	-
2010	35	18	7	10	32	102	143	55	35	27	12	22
2011	41	18	6	7	28	169	169	70	28	19	23	33
2012	18	25	23	16	74	223	150	63	15	30	8	29
2013	48	17	11	24	89	239	136	35	31	17	10	26
2014	28	25	4	7	113	220	188	32	22	21	13	28
Mean of	31	21	14	23	95	201	165	37	25	20	8	29
Monthly \	0.0464	0.0309	0.0215	0.0344	0.1427	0.3004	0.2465	0.0554	0.0379	0.0294	0.0115	0.0429



UK route application & registration monthly phasing - 3

OT

Month ph	April	May	June	July	August	Septemb	October	Novembe	Decembe	January	February	March
2009	-	-	-	-	-	-	-	-	-	-	-	-
2010	1	-	1	9	10	7	8	4	4	1	-	-
2011	-	-	-	9	22	11	4	1	-	-	-	2
2012	-	-	-	9	17	3	6	1	3	-	2	-
2013	-	-	-	10	23	5	7	2	4	2	3	2
2014	-	-	1	11	29	6	11	5	1	5	1	1
Mean of I	-	-	1	12	30	7	7	4	1	3	1	1
Monthly v	-	-	0.0149	0.1782	0.4505	0.1089	0.1040	0.0594	0.0198	0.0396	0.0149	0.0099

PA

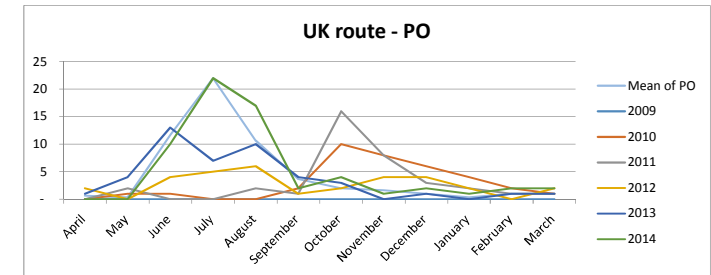
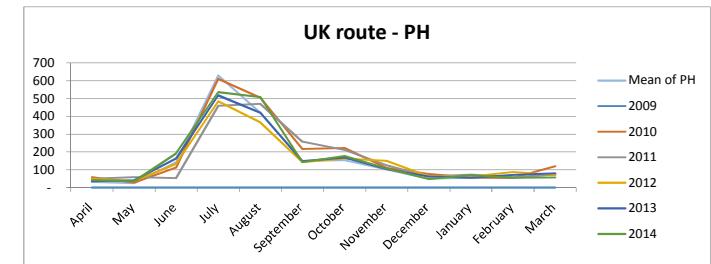
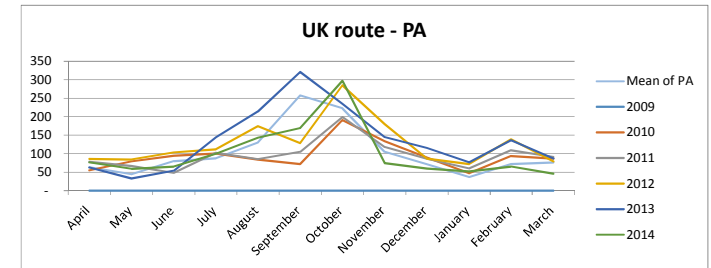
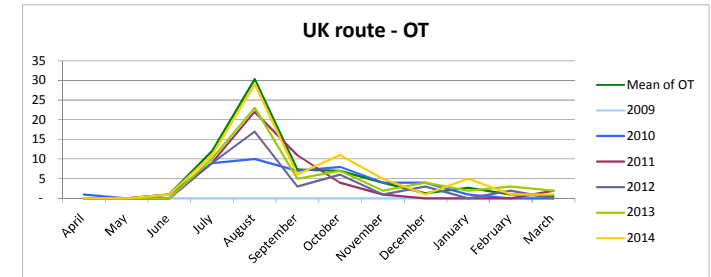
Month ph	April	May	June	July	August	Septemb	October	Novembe	Decembe	January	February	March
2009	-	-	-	-	-	-	-	-	-	-	-	-
2010	55	79	95	101	84	72	191	134	89	47	94	87
2011	78	67	48	102	85	105	199	118	86	60	109	91
2012	86	84	103	112	174	128	285	180	87	72	139	79
2013	63	33	54	145	214	321	235	145	115	76	136	87
2014	76	59	65	100	143	169	297	75	60	52	65	46
Mean of I	64	44	80	87	130	258	223	105	71	37	72	76
Monthly v	0.0510	0.0355	0.0639	0.0700	0.1042	0.2066	0.1788	0.0842	0.0572	0.0297	0.0577	0.0612

PH

Month ph	April	May	June	July	August	Septemb	October	Novembe	Decembe	January	February	March
2009	-	-	-	-	-	-	-	-	-	-	-	-
2010	59	28	113	611	505	216	222	110	77	57	54	119
2011	49	58	53	459	470	257	211	125	62	73	58	72
2012	49	36	132	484	365	142	163	150	62	62	87	71
2013	35	41	162	518	419	149	168	103	62	55	70	80
2014	42	35	192	536	508	142	177	107	48	69	55	57
Mean of I	32	24	140	630	419	149	153	101	49	54	52	75
Monthly v	0.0170	0.0128	0.0747	0.3350	0.2231	0.0795	0.0816	0.0539	0.0259	0.0289	0.0277	0.0399

PO

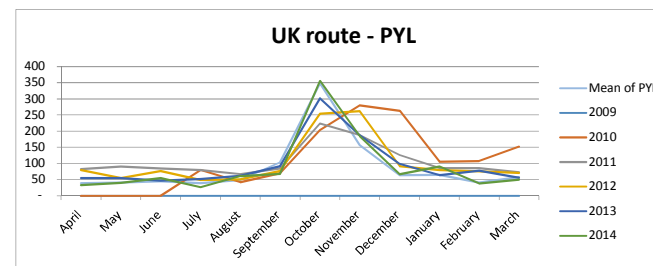
Month ph	April	May	June	July	August	Septemb	October	Novembe	Decembe	January	February	March
2009	-	-	-	-	-	-	-	-	-	-	-	-
2010	-	1	1	-	-	2	10	8	6	4	2	1
2011	-	2	-	-	2	1	16	8	3	2	1	1
2012	2	-	4	5	6	1	2	4	4	2	-	2
2013	1	4	13	7	10	4	3	-	1	-	1	1
2014	-	-	10	22	17	2	4	1	2	1	2	2
Mean of I	1	0	12	22	11	4	2	2	1	0	1	1
Monthly v	0.0119	0.0060	0.2083	0.3929	0.1905	0.0655	0.0357	0.0298	0.0179	0.0060	0.0179	0.0179



UK route application & registration monthly phasing - 4

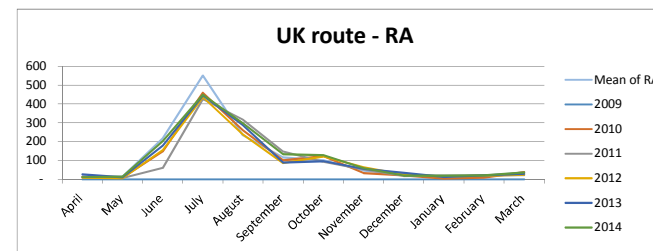
PYL

Month ph	April	May	June	July	August	Septemb	October	Novemb	Decemb	January	February	March
2009	-	-	-	-	-	-	-	-	-	-	-	-
2010	-	-	-	80	42	70	204	280	263	106	108	152
2011	83	91	85	80	67	85	224	188	126	86	86	73
2012	80	55	77	49	51	77	254	262	92	80	76	71
2013	55	55	47	52	62	92	302	188	99	64	78	56
2014	33	40	55	27	61	68	356	185	67	91	38	50
Mean of	39	41	45	39	49	104	348	157	64	65	41	58
Monthly \	0.0375	0.0394	0.0432	0.0372	0.0464	0.0988	0.3319	0.1493	0.0607	0.0619	0.0391	0.0549



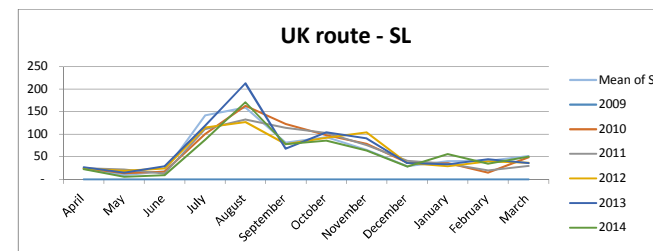
RA

Month ph	April	May	June	July	August	Septemb	October	Novemb	Decemb	January	February	March
2009	-	-	-	-	-	-	-	-	-	-	-	-
2010	13	10	148	460	261	101	123	33	21	4	10	39
2011	13	6	60	426	317	147	92	52	17	19	21	23
2012	10	5	156	437	239	86	122	64	24	14	20	24
2013	26	11	179	446	289	89	96	55	35	12	21	29
2014	12	14	203	450	299	133	128	59	19	19	21	36
Mean of	12	15	218	552	234	116	102	47	25	17	17	37
Monthly \	0.0089	0.0105	0.1567	0.3960	0.1682	0.0830	0.0732	0.0340	0.0179	0.0122	0.0124	0.0268



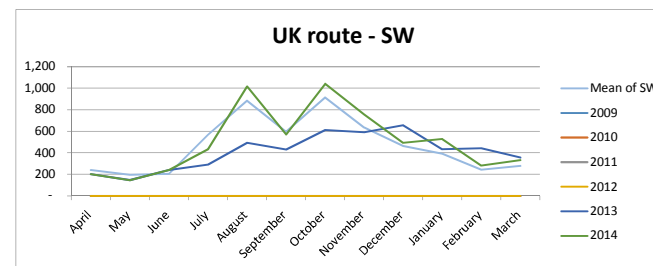
SL

Month ph	April	May	June	July	August	Septemb	October	Novemb	Decemb	January	February	March
2009	-	-	-	-	-	-	-	-	-	-	-	-
2010	25	14	17	101	163	123	98	79	37	36	15	49
2011	25	22	13	111	133	114	103	76	41	35	20	30
2012	24	19	24	115	127	78	92	104	36	29	40	37
2013	27	15	29	119	213	68	104	91	36	33	45	36
2014	23	6	9	88	171	78	86	64	28	56	35	50
Mean of	23	10	18	142	159	82	94	65	29	41	41	52
Monthly \	0.0309	0.0128	0.0238	0.1881	0.2110	0.1082	0.1241	0.0861	0.0384	0.0539	0.0543	0.0684



SW

Month ph	April	May	June	July	August	Septemb	October	Novemb	Decemb	January	February	March
2009	-	-	-	-	-	-	-	-	-	-	-	-
2010	-	-	-	-	-	-	-	-	-	-	-	-
2011	-	-	-	-	-	-	-	-	-	-	-	-
2012	-	-	-	-	-	-	-	-	-	-	-	-
2013	201	147	241	289	494	429	613	591	656	433	441	357
2014	201	146	240	434	1,015	570	1,042	757	494	527	281	333
Mean of	241	196	204	568	886	596	913	636	464	392	244	277
Monthly \	0.0430	0.0349	0.0364	0.1010	0.1578	0.1061	0.1626	0.1132	0.0826	0.0697	0.0434	0.0494



# INTL Application cycle

Month name	April	May	June	July	August	September	October	November	December	January	February	March
Month number	4	5	6	7	8	9	10	11	12	1	2	3

## International route application phasing (scrutiny fees) - 1

### AS

Financial year ending	April	May	June	July	August	September	October	November	December	January	February	March
2011	-	-	-	2	2	4	1	2	-	1	2	1
2012	-	-	4	-	-	-	3	5	2	1	1	-
2013	3	1	-	1	-	1	1	-	2	1	-	1
2014	-	-	-	3	1	1	-	1	-	2	1	-
2015	4	2	2	-	3	-	2	-	2	1	-	4
2016	-	-	-	-	2	1	1	2	-	1	-	-
Mean of AS	1	0	1	1	1	1	1	1	1	1	1	1
Monthly weighting AS	0.0824	0.0353	0.0824	0.0706	0.0941	0.0824	0.1059	0.1176	0.0941	0.0941	0.0471	0.0941

### BS

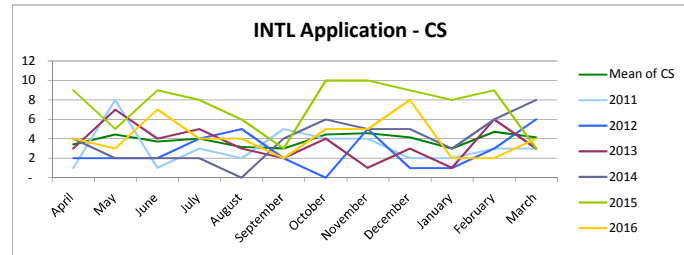
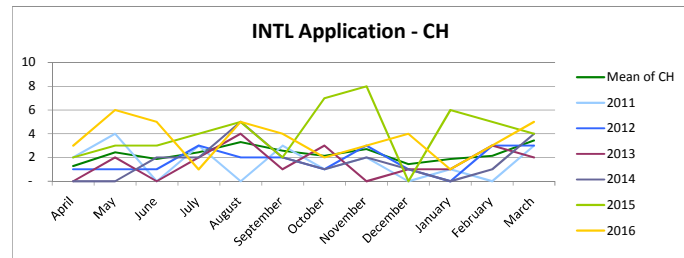
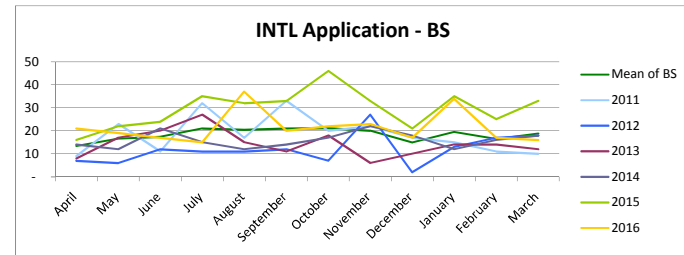
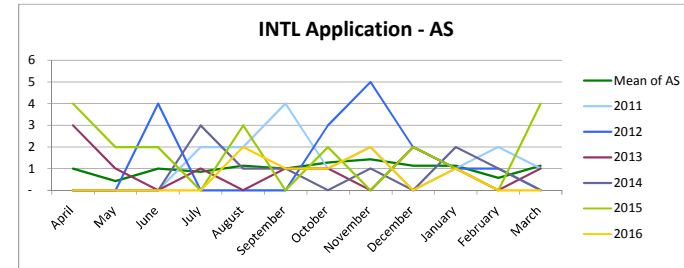
Financial year ending	April	May	June	July	August	September	October	November	December	January	February	March
2011	9	23	11	32	17	33	20	22	17	15	11	10
2012	7	6	12	11	11	12	7	27	2	13	17	18
2013	8	17	20	27	15	11	18	6	10	14	14	12
2014	14	12	21	15	12	14	17	22	18	12	16	18
2015	16	22	24	35	32	33	46	33	21	35	25	33
2016	21	19	17	15	37	20	22	23	17	34	17	16
Mean of BS	13	17	17	21	20	21	21	20	15	19	16	19
Monthly weighting BS	0.0609	0.0751	0.0790	0.0952	0.0926	0.0952	0.0959	0.0907	0.0674	0.0881	0.0745	0.0855

### CH

Financial year ending	April	May	June	July	August	September	October	November	December	January	February	March
2011	2	4	-	3	-	3	1	2	-	1	-	3
2012	1	1	1	3	2	2	1	3	1	-	3	3
2013	-	2	-	2	4	1	3	-	1	1	3	2
2014	-	-	2	2	5	2	1	2	1	-	1	4
2015	2	3	3	4	5	2	7	8	-	6	5	4
2016	3	6	5	1	5	4	2	3	4	1	3	5
Mean of CH	1	2	2	2	3	3	2	3	1	2	2	3
Monthly weighting CH	0.0466	0.0881	0.0674	0.0881	0.1192	0.0933	0.0777	0.0984	0.0518	0.0674	0.0777	0.1244

### CS

Financial year ending	April	May	June	July	August	September	October	November	December	January	February	March
2011	1	8	1	3	2	5	4	4	2	2	3	3
2012	2	2	2	4	5	2	-	5	1	1	3	6
2013	3	7	4	5	3	2	4	1	3	1	6	3
2014	4	2	2	2	-	4	6	5	5	3	6	8
2015	9	5	9	8	6	3	10	10	9	8	9	3
2016	4	3	7	4	4	2	5	5	8	2	2	4
Mean of CS	3	4	4	4	3	3	4	5	4	3	5	4
Monthly weighting CS	0.0734	0.0948	0.0795	0.0856	0.0673	0.0642	0.0948	0.0979	0.0887	0.0642	0.1009	0.0887





International route application phasing (scrutiny fees) - 2

DT

Financial year ending	April	May	June	July	August	September	October	November	December	January	February	March
2011	8	15	4	13	5	13	13	10	5	12	6	8
2012	2	8	11	8	6	7	7	19	5	2	15	20
2013	14	17	9	8	15	6	11	3	10	4	3	5
2014	13	8	9	13	8	8	8	9	6	14	15	11
2015	17	16	17	8	20	6	15	18	8	18	22	19
2016	17	15	23	12	17	10	16	12	10	20	17	14
Mean of I	12	13	12	10	11	8	10	11	7	11	12	12
Monthly v	0.0921	0.1009	0.0932	0.0757	0.0844	0.0614	0.0800	0.0855	0.0570	0.0855	0.0899	0.0943

HAD

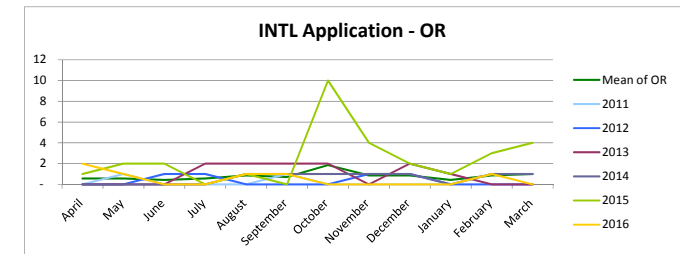
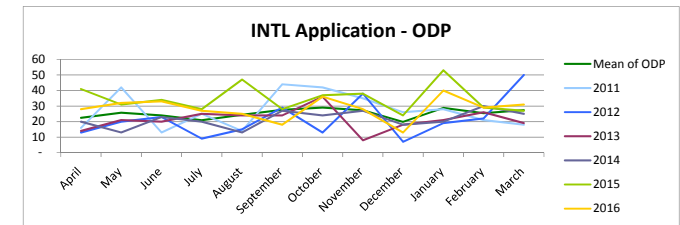
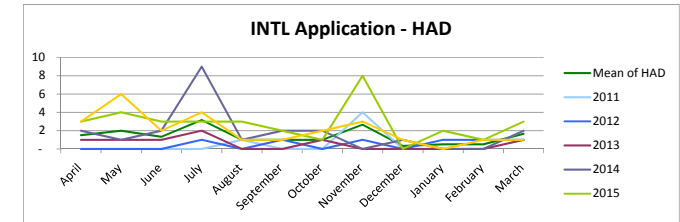
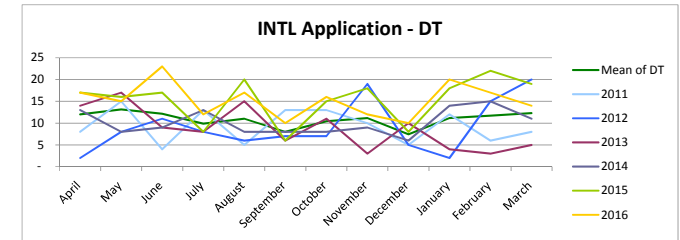
Month ph	April	May	June	July	August	September	October	November	December	January	February	March
2011	-	-	-	-	1	-	-	4	-	-	-	2
2012	-	-	-	1	-	1	-	1	-	1	1	1
2013	1	1	1	2	-	-	1	-	-	-	-	1
2014	2	1	2	9	1	2	2	-	1	-	-	2
2015	3	4	3	3	3	2	1	8	-	2	1	3
2016	3	6	2	4	1	1	2	3	1	-	1	1
Mean of I	2	2	1	3	1	1	1	3	0	1	1	2
Monthly v	0.0900	0.1200	0.0800	0.1900	0.0600	0.0600	0.0600	0.1600	0.0200	0.0300	0.0300	0.1000

ODP

Month ph	April	May	June	July	August	September	October	November	December	January	February	March
2011	16	42	13	25	14	44	42	35	26	28	21	18
2012	13	20	23	9	15	29	13	38	7	19	22	50
2013	14	21	20	25	24	24	36	8	18	21	26	19
2014	20	13	23	20	13	27	24	27	18	20	30	25
2015	41	31	34	28	47	28	37	38	24	53	29	27
2016	28	32	33	27	25	18	36	28	13	40	29	31
Mean of I	22	26	24	21	24	28	29	27	20	29	25	27
Monthly v	0.0741	0.0849	0.0792	0.0689	0.0807	0.0910	0.0958	0.0901	0.0656	0.0953	0.0840	0.0906

OR

Month ph	April	May	June	July	August	September	October	November	December	January	February	March
2011	-	1	-	-	-	1	-	-	-	-	1	1
2012	-	-	1	1	-	-	-	1	1	-	-	-
2013	-	-	-	2	2	2	2	-	2	1	-	-
2014	-	-	-	-	1	1	1	1	1	-	1	1
2015	1	2	2	-	1	-	10	4	2	1	3	4
2016	2	1	-	-	1	1	-	-	-	-	1	-
Mean of I	1	1	0	1	1	1	2	1	1	0	1	1
Monthly v	0.0597	0.0597	0.0448	0.0597	0.0896	0.0746	0.1940	0.0896	0.0896	0.0448	0.0896	0.1045



International route application phasing (scrutiny fees) - 3

OT

Month ph	April	May	June	July	August	Septemb	October	Novembe	Decembe	January	February	March
2011	1	-	-	-	-	-	-	-	-	1	-	-
2012	-	-	-	1	-	-	-	-	-	-	-	-
2013	1	-	-	-	1	-	1	-	1	1	-	-
2014	-	-	-	-	-	-	1	1	1	1	1	-
2015	-	-	-	-	-	-	-	-	1	-	-	-
2016	-	-	1	-	1	-	-	-	1	-	-	-
Mean of l	0	0	0	0	0	-	0	0	0	0	0	-
Monthly v	0.1250	0.0625	0.0625	0.0625	0.1250	-	0.1250	0.0625	0.1250	0.1875	0.0625	-

PA

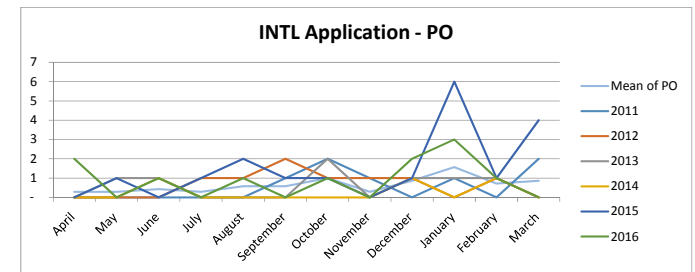
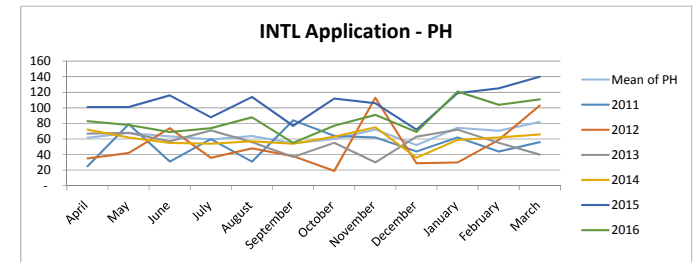
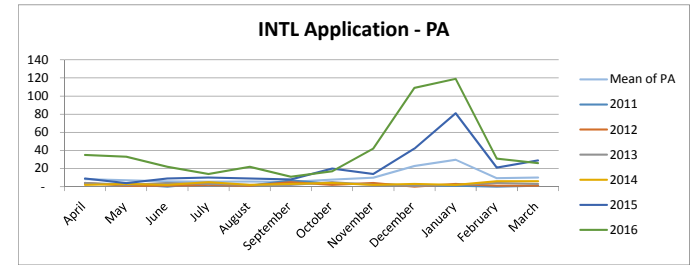
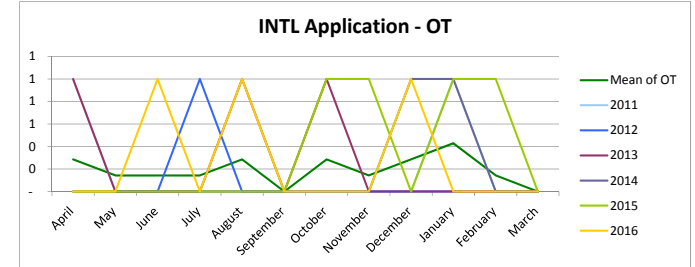
Month ph	April	May	June	July	August	Septemb	October	Novembe	Decembe	January	February	March
2011	3	3	-	4	1	7	3	3	1	1	-	1
2012	4	1	1	2	1	5	2	4	-	3	1	1
2013	4	2	4	3	2	2	5	2	1	2	4	3
2014	2	3	2	5	2	3	4	2	3	2	6	6
2015	9	4	9	10	9	8	20	14	42	81	21	29
2016	35	33	22	14	22	11	17	42	109	119	31	26
Mean of l	8	7	6	6	6	5	8	10	23	30	9	10
Monthly v	0.0651	0.0550	0.0460	0.0438	0.0449	0.0415	0.0606	0.0774	0.1785	0.2334	0.0741	0.0797

PH

Month ph	April	May	June	July	August	Septemb	October	Novembe	Decembe	January	February	March
2011	25	79	31	60	31	84	64	62	44	62	44	56
2012	35	42	74	36	48	38	19	113	29	30	59	103
2013	67	68	57	71	56	37	55	30	63	72	55	40
2014	72	62	55	54	57	54	63	75	36	59	62	66
2015	101	101	116	88	114	77	112	106	72	119	125	140
2016	83	78	69	74	88	55	77	91	69	121	104	111
Mean of l	62	68	63	60	64	55	60	72	52	74	71	82
Monthly v	0.0788	0.0866	0.0811	0.0762	0.0817	0.0698	0.0769	0.0921	0.0669	0.0950	0.0903	0.1047

PO

Month ph	April	May	June	July	August	Septemb	October	Novembe	Decembe	January	February	March
2011	-	-	-	-	-	1	2	1	-	1	-	2
2012	-	-	-	1	1	2	1	1	1	1	1	-
2013	-	1	1	-	-	-	2	-	1	1	1	-
2014	-	-	1	-	-	-	-	-	1	-	1	-
2015	-	1	-	1	2	1	1	-	1	6	1	4
2016	2	-	1	-	1	-	1	-	2	3	1	-
Mean of l	0	0	0	0	1	1	1	0	1	2	1	1
Monthly v	0.0370	0.0370	0.0556	0.0370	0.0741	0.0741	0.1296	0.0370	0.1111	0.2037	0.0926	0.1111



International route application phasing (scrutiny fees) - 4

PYL

Month ph	April	May	June	July	August	September	October	November	December	January	February	March
2011	13	20	11	19	9	29	21	11	11	15	11	11
2012	12	8	14	9	15	10	5	17	8	6	6	14
2013	16	14	10	16	12	10	7	7	27	8	14	11
2014	12	10	10	14	9	11	17	8	9	11	17	22
2015	26	22	22	36	25	23	41	22	22	22	22	27
2016	19	25	19	26	17	14	20	20	20	19	9	18
Mean of f	16	17	14	17	13	15	17	16	16	14	14	18
Monthly v	0.0871	0.0880	0.0765	0.0930	0.0694	0.0815	0.0922	0.0831	0.0869	0.0724	0.0724	0.0975

RA

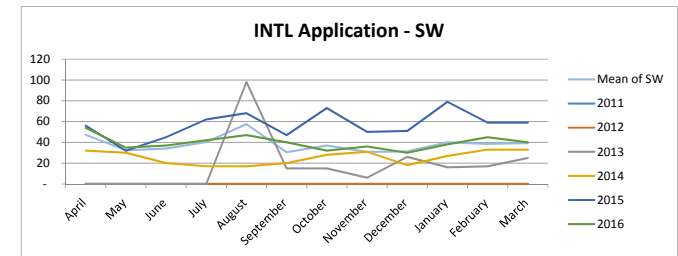
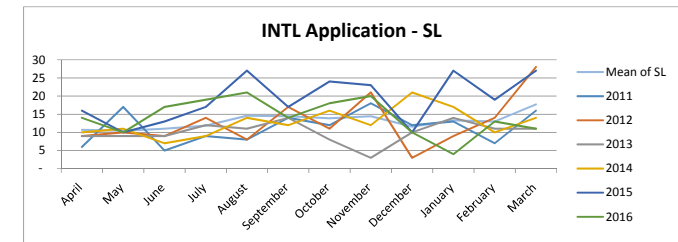
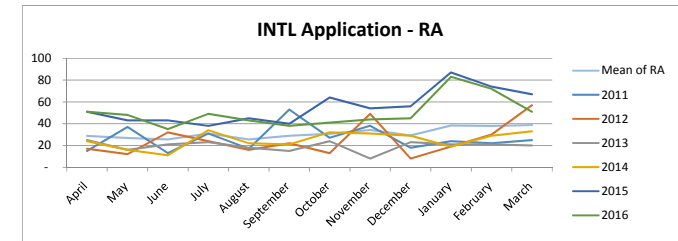
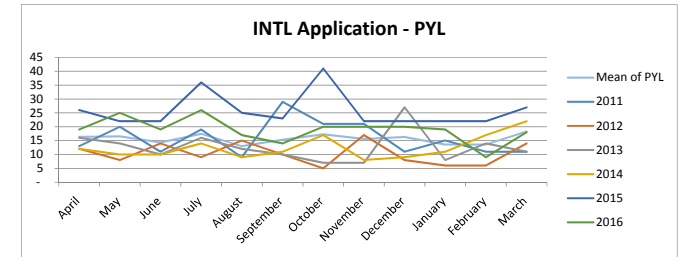
Month ph	April	May	June	July	August	September	October	November	December	January	February	March
2011	15	37	13	31	17	53	27	38	18	24	22	25
2012	17	12	32	24	16	22	13	49	8	19	30	57
2013	25	16	21	23	18	15	24	8	23	21	21	20
2014	24	16	11	34	22	21	32	31	29	19	29	33
2015	51	43	43	38	45	40	64	54	56	87	74	67
2016	51	48	35	49	43	38	41	44	45	83	72	51
Mean of f	29	27	26	31	26	29	31	34	29	38	38	39
Monthly v	0.0767	0.0714	0.0680	0.0824	0.0680	0.0771	0.0817	0.0912	0.0779	0.1018	0.1007	0.1030

SL

Month ph	April	May	June	July	August	September	October	November	December	January	February	March
2011	6	17	5	9	8	14	12	18	12	13	7	16
2012	9	10	9	14	8	17	11	21	3	9	14	28
2013	9	9	9	12	11	14	8	3	10	14	11	11
2014	10	11	7	9	14	12	16	12	21	17	10	14
2015	16	10	13	17	27	17	24	23	10	27	19	27
2016	14	10	17	19	21	14	18	20	10	4	13	11
Mean of f	11	10	11	12	15	14	14	14	12	13	13	18
Monthly v	0.0683	0.0665	0.0701	0.0756	0.0929	0.0920	0.0883	0.0920	0.0738	0.0847	0.0829	0.1129

SW

Month ph	April	May	June	July	August	September	October	November	December	January	February	March
2011	-	-	-	-	-	-	-	-	-	-	-	-
2012	-	-	-	-	-	-	-	-	-	-	-	-
2013	-	-	-	-	98	15	15	6	26	16	17	25
2014	32	30	20	17	17	20	28	31	18	27	33	33
2015	56	32	45	62	68	47	73	50	51	79	59	59
2016	54	35	37	42	47	40	32	36	30	38	45	40
Mean of f	47	32	34	40	58	31	37	31	31	40	39	39
Monthly v	0.1032	0.0705	0.0741	0.0879	0.1253	0.0665	0.0807	0.0670	0.0681	0.0872	0.0839	0.0856



# INTL Registration cycle

Month name	April	May	June	July	August	September	October	November	December	January	February	March
Month number	4	5	6	7	8	9	10	11	12	1	2	3

## International route registration phasing - 1

'INTL Registration cycle'!K11

### AS

Financial year ending	April	May	June	July	August	September	October	November	December	January	February	March
2011	2	-	1	1	-	-	3	1	3	2	2	-
2012	1	-	2	1	1	1	-	-	2	1	-	1
2013	2	2	4	-	-	1	1	-	1	-	-	3
2014	2	-	1	-	-	1	-	1	2	-	1	-
2015	-	-	2	1	1	2	2	1	2	1	2	1
2016	-	-	2	-	1	1	-	2	-	-	1	-
Mean of AS	1	-	2	0	1	1	1	1	1	0	1	0
Monthly weighting	0.0667	-	0.1667	0.0333	0.0667	0.1333	0.0667	0.1333	0.1333	0.0333	0.1333	0.0333

'INTL Registration cycle'!O12

### BS

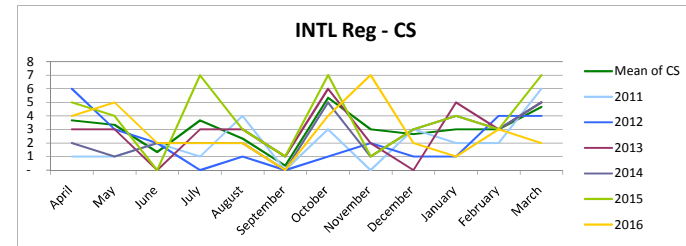
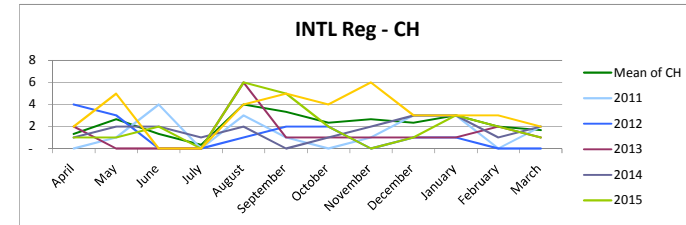
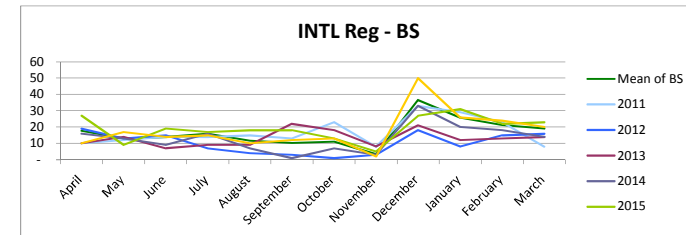
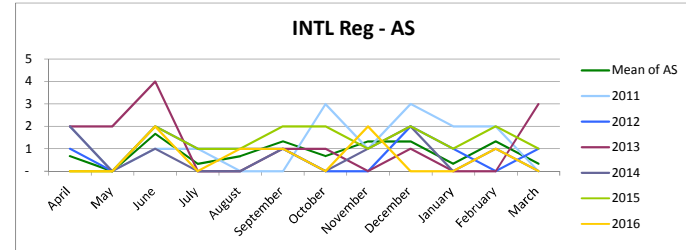
Financial year ending	April	May	June	July	August	September	October	November	December	January	February	March
2011	10	12	14	14	15	13	23	8	33	29	23	8
2012	19	13	15	7	4	3	1	3	18	8	15	16
2013	10	14	7	9	9	22	18	8	21	12	13	14
2014	16	13	9	16	7	1	7	3	33	20	18	14
2015	27	9	19	17	18	18	13	5	27	31	22	23
2016	10	17	14	15	10	12	13	2	50	26	24	20
Mean of BS	18	13	14	16	12	10	11	3	37	26	21	19
Monthly weighting	0.0885	0.0651	0.0701	0.0801	0.0584	0.0518	0.0551	0.0167	0.1836	0.1285	0.1068	0.0952

### CH

Financial year ending	April	May	June	July	August	September	October	November	December	January	February	March
2011	-	1	4	-	3	1	-	1	3	3	-	2
2012	4	3	-	-	1	2	2	-	1	1	-	-
2013	2	-	-	-	6	1	1	1	1	1	2	1
2014	1	2	2	1	2	-	1	2	3	3	1	2
2015	1	1	2	-	6	5	2	-	1	3	2	1
2016	2	5	-	-	4	5	4	6	3	3	3	2
Mean of CH	1	3	1	0	4	3	2	3	2	3	2	2
Monthly weighting	0.0494	0.0988	0.0494	0.0123	0.1481	0.1235	0.0864	0.0988	0.0864	0.1111	0.0741	0.0617

### CS

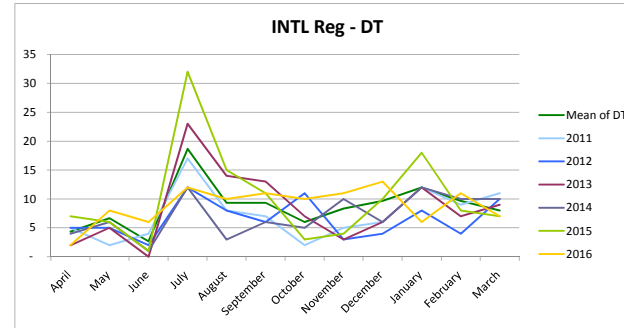
Financial year ending	April	May	June	July	August	September	October	November	December	January	February	March
2011	1	1	2	1	4	-	3	-	3	2	2	6
2012	6	3	2	-	1	-	1	2	1	1	4	4
2013	3	3	-	3	3	1	6	2	-	5	3	5
2014	2	1	2	2	2	-	5	1	3	4	3	5
2015	5	4	-	7	3	1	7	1	3	4	3	7
2016	4	5	2	2	2	-	4	7	2	1	3	2
Mean of CS	4	3	1	4	2	0	5	3	3	3	3	5
Monthly weighting	0.1009	0.0917	0.0367	0.1009	0.0642	0.0092	0.1468	0.0826	0.0734	0.0826	0.0826	0.1284



International route registration phasing - 2

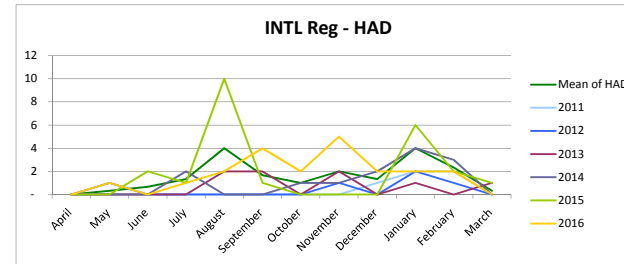
DT

	April	May	June	July	August	September	October	November	December	January	February	March
Financial year												
2011	5	2	4	17	8	7	2	5	6	12	9	11
2012	5	5	2	12	8	6	11	3	4	8	4	10
2013	2	5	-	23	14	13	7	3	6	12	7	9
2014	4	6	1	12	3	6	5	10	6	12	10	10
2015	7	6	1	32	15	11	3	4	10	18	8	7
2016	2	8	6	12	10	11	10	11	13	6	11	7
Mean of DT	4	7	3	19	9	9	6	8	10	12	10	8
Monthly weighting DT	0.0414	0.0637	0.0255	0.1783	0.0892	0.0892	0.0573	0.0796	0.0924	0.1146	0.0924	0.0764



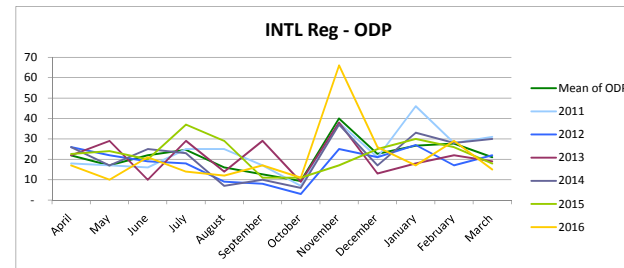
HAD

	April	May	June	July	August	September	October	November	December	January	February	March
Month phasing												
2011	-	-	-	-	-	-	-	-	1	2	2	-
2012	-	1	-	-	-	-	-	1	-	2	1	-
2013	-	-	-	-	2	2	-	2	-	1	-	1
2014	-	-	-	2	-	-	1	1	2	4	3	-
2015	-	-	2	1	10	1	-	-	-	6	2	1
2016	-	1	-	1	2	4	2	5	2	2	2	-
Mean of HAD	-	0	1	1	4	2	1	2	1	4	2	0
Monthly weighting HAD	-	0.0175	0.0351	0.0702	0.2105	0.0877	0.0526	0.1053	0.0702	0.2105	0.1228	0.0175



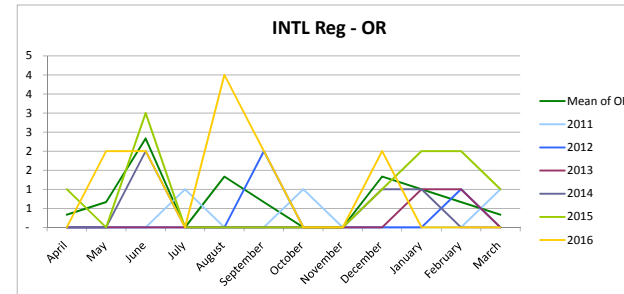
ODP

	April	May	June	July	August	September	October	November	December	January	February	March
Month phasing												
2011	18	17	16	25	25	17	7	38	21	46	28	31
2012	26	22	19	18	9	8	3	25	21	27	17	22
2013	22	29	10	29	14	29	9	38	13	18	22	19
2014	26	17	25	23	7	10	6	37	17	33	28	30
2015	23	24	20	37	29	11	11	17	25	30	26	18
2016	17	10	21	14	12	17	11	66	26	17	29	15
Mean of ODP	22	17	22	25	16	13	9	40	23	27	28	21
Monthly weighting ODP	0.0836	0.0650	0.0841	0.0943	0.0612	0.0484	0.0357	0.1529	0.0867	0.1020	0.1058	0.0803



OR

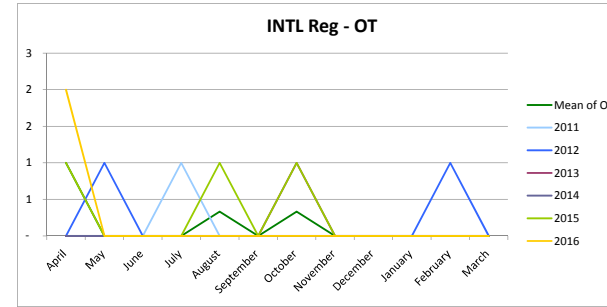
	April	May	June	July	August	September	October	November	December	January	February	March
Month phasing												
2011	-	-	-	1	-	-	1	-	-	-	-	1
2012	-	-	-	-	-	-	2	-	-	-	1	-
2013	-	-	-	-	-	-	-	-	-	1	1	-
2014	-	-	2	-	-	-	-	-	1	1	-	-
2015	1	-	3	-	-	-	-	-	1	2	2	1
2016	-	2	2	-	4	2	-	-	2	-	-	-
Mean of OR	0	1	2	-	1	1	-	-	1	1	1	0
Monthly weighting OR	0.0385	0.0769	0.2692	-	0.1538	0.0769	-	-	0.1538	0.1154	0.0769	0.0385



International route registration phasing - 3

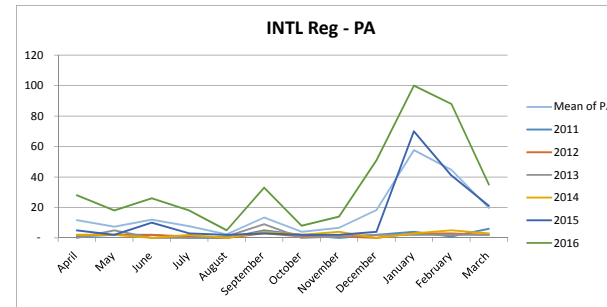
OT

Month phasing	April	May	June	July	August	Septemb	October	Novembe	Decembe	January	February	March
2011	-	-	-	1	-	-	-	-	-	-	-	-
2012	-	1	-	-	-	-	-	-	-	-	1	-
2013	-	-	-	-	-	-	1	-	-	-	-	-
2014	-	-	-	-	-	-	-	-	-	-	-	-
2015	1	-	-	-	1	-	1	-	-	-	-	-
2016	2	-	-	-	-	-	-	-	-	-	-	-
Mean of OT	1	-	-	-	0	-	0	-	-	-	-	-
Monthly weighting OT	0.6000	-	-	-	0.2000	-	0.2000	-	-	-	-	-



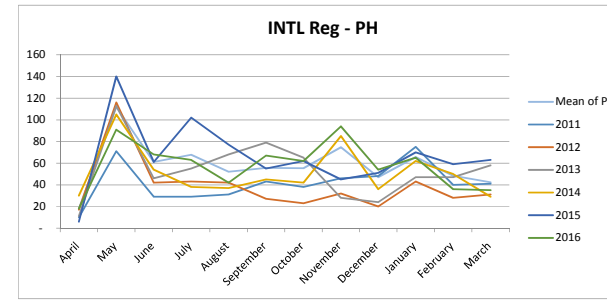
PA

Month phasing	April	May	June	July	August	Septemb	October	Novembe	Decembe	January	February	March
2011	1	2	2	-	-	5	2	1	2	4	1	6
2012	2	2	2	1	-	3	1	-	3	3	2	2
2013	-	5	-	-	1	9	-	1	2	2	2	2
2014	2	2	-	2	-	4	2	4	-	3	5	3
2015	5	2	10	3	2	3	2	2	4	70	41	21
2016	28	18	26	18	5	33	8	14	51	100	88	35
Mean of PA	12	7	12	8	2	13	4	7	18	58	45	20
Monthly weighting PA	0.0568	0.0357	0.0584	0.0373	0.0114	0.0649	0.0195	0.0325	0.0893	0.2808	0.2175	0.0958



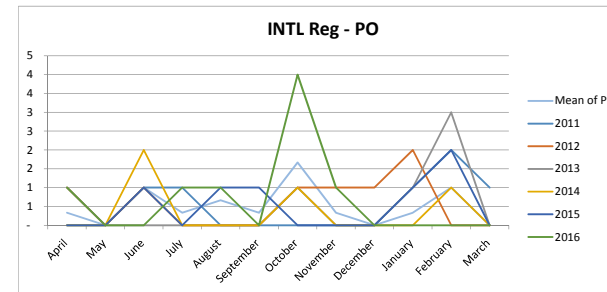
PH

Month phasing	April	May	June	July	August	Septemb	October	Novembe	Decembe	January	February	March
2011	10	71	29	29	31	43	38	46	48	75	40	41
2012	17	116	42	43	42	27	23	32	20	43	28	31
2013	11	113	46	55	68	79	65	28	24	47	47	58
2014	30	105	54	38	37	45	42	85	36	62	50	29
2015	6	140	61	102	77	55	62	45	51	70	59	63
2016	18	91	68	63	42	67	62	94	54	65	36	35
Mean of PH	18	112	61	68	52	56	55	75	47	66	48	42
Monthly weighting PH	0.0257	0.1601	0.0872	0.0967	0.0743	0.0796	0.0791	0.1067	0.0672	0.0939	0.0691	0.0605



PO

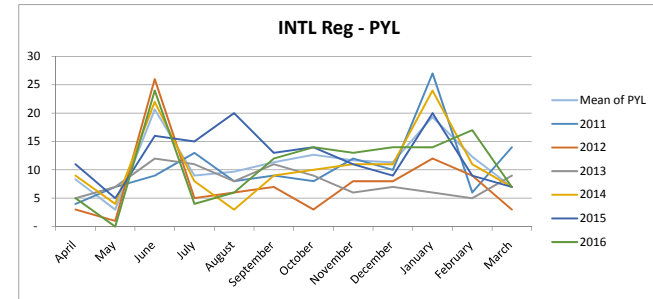
Month phasing	April	May	June	July	August	Septemb	October	Novembe	Decembe	January	February	March
2011	-	-	1	1	-	-	-	-	-	1	2	1
2012	1	-	1	-	-	-	1	1	1	2	-	-
2013	1	-	-	-	-	-	1	-	-	1	3	-
2014	-	-	2	-	-	-	1	-	-	-	1	-
2015	-	-	1	-	1	1	-	-	-	1	2	-
2016	1	-	-	1	1	-	4	1	-	-	-	-
Mean of PO	0	-	1	0	1	0	2	0	-	0	1	-
Monthly weighting PO	0.0556	-	0.1667	0.0556	0.1111	0.0556	0.2778	0.0556	-	0.0556	0.1667	-



International route registration phasing - 4

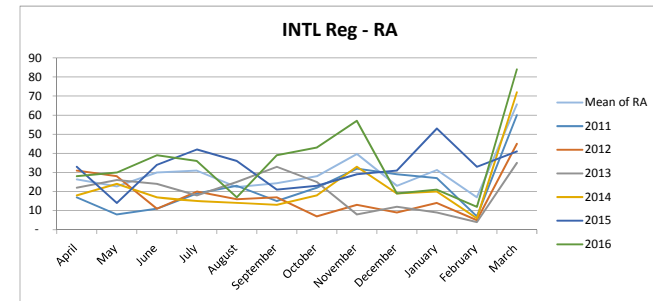
PYL

Month phasing	April	May	June	July	August	Septemb	October	Novembe	Decembe	January	February	March
2011	4	7	9	13	8	9	8	12	10	27	6	14
2012	3	1	26	5	6	7	3	8	8	12	9	3
2013	5	7	12	11	8	11	9	6	7	6	5	9
2014	9	4	22	8	3	9	10	11	11	24	11	7
2015	11	5	16	15	20	13	14	11	9	20	9	7
2016	5	-	24	4	6	12	14	13	14	14	17	7
Mean of PYL	8	3	21	9	10	11	13	12	11	19	12	7
Monthly weighting PYL	0.0611	0.0220	0.1516	0.0660	0.0709	0.0831	0.0929	0.0856	0.0831	0.1418	0.0905	0.0513



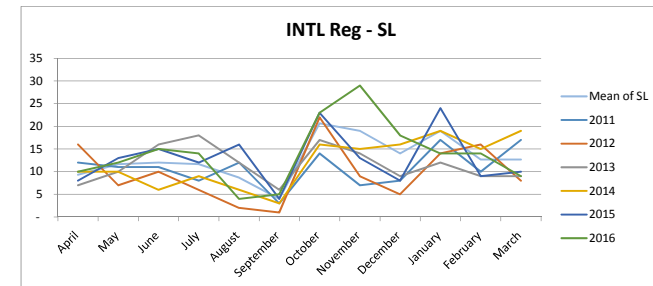
RA

Month phasing	April	May	June	July	August	Septemb	October	Novembe	Decembe	January	February	March
2011	17	8	11	19	23	15	22	32	29	27	7	60
2012	31	28	11	20	16	17	7	13	9	14	5	45
2013	22	26	24	18	25	33	25	8	12	9	4	35
2014	18	24	17	15	14	13	18	33	19	20	6	72
2015	33	14	34	42	36	21	23	29	31	53	33	41
2016	28	30	39	36	17	39	43	57	19	21	12	84
Mean of RA	26	23	30	31	22	24	28	40	23	31	17	66
Monthly weighting RA	0.0729	0.0627	0.0830	0.0858	0.0618	0.0673	0.0775	0.1098	0.0637	0.0867	0.0470	0.1817



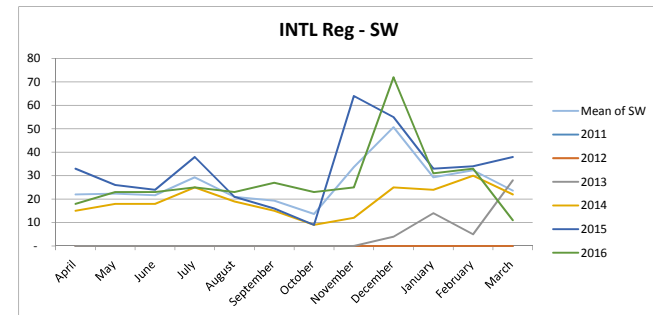
SL

Month phasing	April	May	June	July	August	Septemb	October	Novembe	Decembe	January	February	March
2011	12	11	11	8	12	3	14	7	8	17	10	17
2012	16	7	10	6	2	1	22	9	5	14	16	8
2013	7	10	16	18	12	6	17	14	9	12	9	9
2014	10	10	6	9	6	3	16	15	16	19	15	19
2015	8	13	15	12	16	4	23	13	8	24	9	10
2016	10	12	15	14	4	5	23	29	18	14	14	9
Mean of SL	9	12	12	12	9	4	21	19	14	19	13	13
Monthly weighting SL	0.0601	0.0751	0.0773	0.0751	0.0558	0.0258	0.1330	0.1223	0.0901	0.1223	0.0815	0.0815



SW

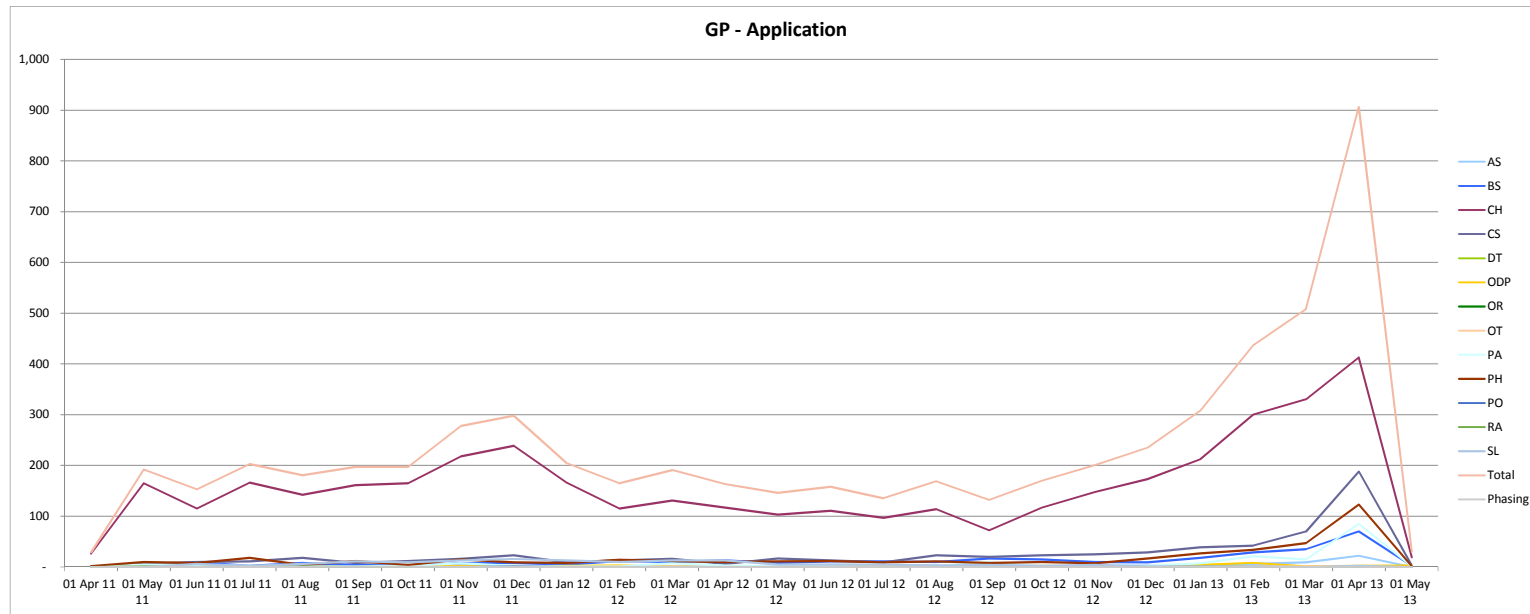
Month phasing	April	May	June	July	August	Septemb	October	Novembe	Decembe	January	February	March
2011	-	-	-	-	-	-	-	-	-	-	-	-
2012	-	-	-	-	-	-	-	-	-	-	-	-
2013	-	-	-	-	-	-	-	-	4	14	5	28
2014	15	18	18	25	19	15	9	12	25	24	30	22
2015	33	26	24	38	21	16	9	64	55	33	34	38
2016	18	23	23	25	23	27	23	25	72	31	33	11
Mean of SW	22	22	22	29	21	19	14	34	51	29	32	24
Monthly weighting SW	0.0690	0.0700	0.0679	0.0920	0.0658	0.0606	0.0428	0.1055	0.1588	0.0920	0.1014	0.0742



## GP Application cycle

### GRANDPARENTING MODEL PHASING BASED ON TWO YEAR WINDOW

	Actuals	Actuals	Actuals	Actuals	Actuals	Actuals	Actuals	Actuals	Actuals	Actuals	Actuals	Actuals	Actuals	Actuals	Actuals	Actuals	Actuals	Actuals	Actuals	Actuals	Actuals	Actuals	Actuals	Actuals	Actuals	Actuals	Forecast	Forecast
Month of GP cycle	30 Apr 11	#####	30 Jun 11	31 Jul 11	31 Aug 11	30 Sep 11	31 Oct 11	#####	31 Dec 11	31 Jan 12	29 Feb 12	31 Mar 12	30 Apr 12	#####	30 Jun 12	31 Jul 12	31 Aug 12	30 Sep 12	31 Oct 12	#####	31 Dec 12	31 Jan 13	28 Feb 13	31 Mar 13	30 Apr 13	#####	Forecast	Forecast
AS	-	-	1	-	1	-	1	2	-	3	-	1	1	1	4	2	3	1	1	3	3	1	6	9	22	-	-	
BS	1	4	9	2	8	4	2	7	8	5	12	10	13	8	11	11	10	17	15	10	9	18	29	35	70	2	-	
CH	26	165	115	166	142	161	165	218	239	166	115	131	117	103	111	97	114	72	117	147	173	212	300	330	413	19	-	
CS	-	6	10	11	18	8	12	16	23	9	13	16	6	17	13	9	23	20	23	25	29	39	42	70	188	3	-	
DT	-	-	-	-	-	-	2	-	-	-	-	-	-	-	-	-	-	-	-	-	-	-	1	-	-	-	-	
ODP	1	3	1	1	-	-	2	2	1	2	3	1	-	-	2	1	-	1	2	1	-	4	8	1	2	3	-	
OR	-	1	-	-	-	-	-	-	-	-	-	-	-	-	-	-	-	-	-	-	-	-	-	-	-	-	-	
OT	-	-	-	-	-	-	-	-	-	-	-	1	-	-	-	-	-	-	-	-	-	1	1	1	1	1	-	
PA	-	5	4	2	1	1	2	7	2	1	1	7	3	1	2	-	2	9	1	3	2	7	21	15	85	1	-	
PH	2	10	8	18	4	12	4	15	9	8	14	12	10	11	12	9	11	8	10	7	17	27	34	47	123	2	-	
PO	-	-	-	1	-	-	-	-	1	-	-	-	-	-	-	-	-	-	-	1	-	-	-	-	-	-	-	
RA	-	1	-	1	1	-	-	-	-	-	-	-	-	-	-	-	-	-	-	-	-	1	-	-	-	-	-	
SL	-	-	6	2	6	11	9	13	16	13	10	13	13	5	5	5	3	4	2	4	1	1	1	-	2	-		
Total	29	192	153	203	181	197	197	278	298	205	165	191	163	146	158	135	169	132	170	200	235	308	437	508	906	30	-	
Phasing	0.0048	0.0321	0.0256	0.0339	0.0302	0.0329	0.0329	0.0464	0.0498	0.0342	0.0276	0.0319	0.0272	0.0244	0.0264	0.0226	0.0282	0.0221	0.0284	0.0334	0.0393	0.0515	0.0730	0.0849	0.1514	0.0050	-	



\* Assume GP periods will be two years only, but no current start dates



# Professional renewal periods

Years	2007/09/11/13/15/17/19												2008/10/12/14/16/18/20											
Months	Jan	Feb	Mar	Apr	May	Jun	Jul	Aug	Sep	Oct	Nov	Dec	Jan	Feb	Mar	Apr	May	Jun	Jul	Aug	Sep	Oct	Nov	Dec
			PYL			OR/PA		BS					RA		AS						ODP			
							PO/SLT/CS								PH		CH/HAD							
							OT										DT							
																					SW			