

Council, 26 March 2014

Education Report

Executive summary and recommendations

Introduction

The report sets out the main activities of the Education Department since the last meeting of Council. It includes statistical information and highlights key work undertaken.

Decision

The Council is requested to discuss the report.

Background information

None

Resource implications

The resources for the Department are set out in the annual work plan and budget 2013-14.

Financial implications

The costs associated with all activities are set out in the budget 2013-14.

Appendices

Education Report

Education Department **Management Information Pack**

Abigail Gorringe, Director of Education
March 2014

Table of contents

Section 1: Management commentary

Section 2: Management statistics

1. Number of approved programmes, by profession, April 2012 - March 2014
2. Overview of approval visits, April 2012 – March 2014
3. Reasons for approval visits, April 2012 – March 2014
4. Overview of annual monitoring submissions, April 2012 - March 2014
5. Overview of major change submissions, April 2012 - March 2014
6. Concerns about approved programmes, April 2012 - March 2014

1 Management commentary

Approval process

The Department has spent the last few months organising and attending approval visits for the 2013–14 academic year. In total, 79 visits across 177 programmes have been arranged from September 2013 - August 2014. The majority of these visits are to social worker programmes (66%) and AMHP programmes (10%). Since the last Council meeting on 6 February 2014, 16 visits covering 39 programmes have taken place.

Annual monitoring process

The Department is now in the peak activity period for the annual monitoring process in the 2013–14 academic year. The first two assessment days took place on 19 and 27 February 2014. Three further assessment days take place this week and the remaining three days are planned for May, June and August 2014. It is still envisaged that the majority of visitor reports will be considered by Education and Training Panels in May, June, July and August 2014.

Major change process

Since our last report to Council, the Department has received eleven new major change notifications, covering 15 programmes. The Education and Training Panel considered 17 programmes which had engaged with the major change process on 13 February 2014 and decided that each of these programmes continued to meet our standards of education and training and an approval visit was not required.

Concerns process

The Department has received no new concerns since our last report to Council. There are currently no outstanding concerns.

See section 2 for more information on the above operational processes.

Independent and supplementary prescribing programmes

The Department has been finalising our work around approving independent prescribing (IP) and supplementary prescribing programmes. A further 36 programmes were approved by the Education and Training Panel in February 2014 (35 via the amended documentary approvals process and 1 via the standard approvals process). In total, 86 IP programmes have been approved, including ten conversion programmes and 17 with a supplementary prescribing exit point recorded as a separate programme. The Department now intend to review this piece of work and feed back to the Education and Training Committee.

Partners

Recruitment is currently underway for clinical scientist visitors. Final preparations are being made for the recruitment of approximately 15 lay visitors. Adverts will go out in April and training is planned for July 2014, so that they can sit on approval visit panels from September 2014 onwards.

Seminars

In the last month, the Department has finalised our work relating to the eight education seminars delivered from September 2013 – February 2014. Resources and videos used in the seminars have been uploaded to the HCPC website and YouTube and an article ‘who are your service users’ added to the HCPC blog. A review report was taken to the Education and Training Committee on 6 March 2014. Learning points from the report will now be fed into the preparations for similar seminars in autumn/winter 2014-15.

Publications

The Department is now finalising our annual report 2013 following its consideration by the Education and Training Committee on 6 March 2014. The report focuses on the operational processes in the 2012–13 academic year. It is anticipated that the report will be published in May 2014 and then communicated to education providers and key stakeholders.

Liaison with stakeholders

Members of the Department met with the following groups in February and March 2014:

- The Department of Health
- The Department for Education
- Health Education England

Major project - Education systems build

The Department continues to drive forward the major project, with the intention that a new system and internal processes will be in place in early 2015. Two employees remain seconded to work on this full-time, with other Department members involved on a more ad-hoc basis.

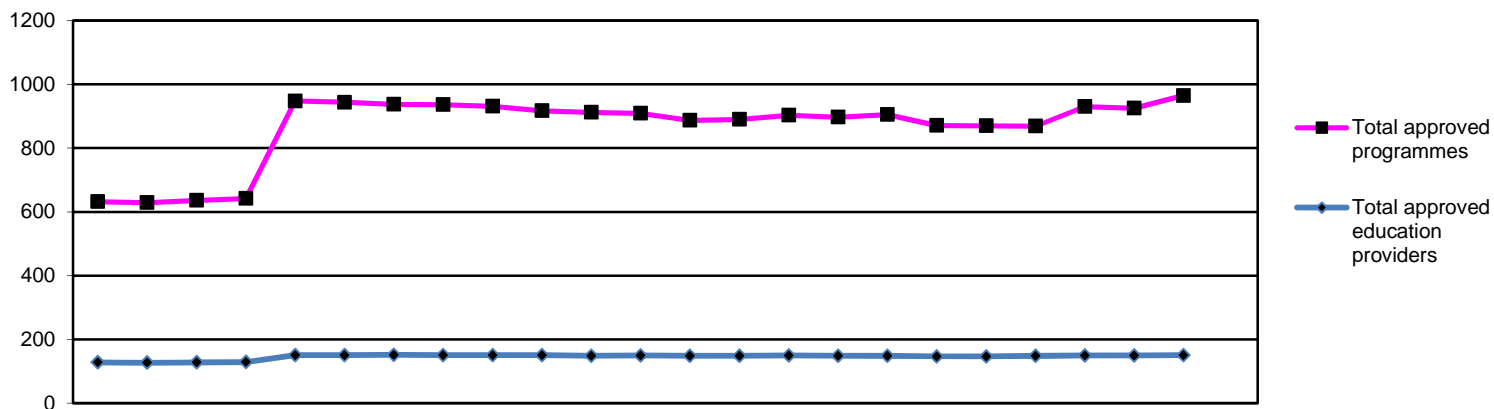
The chosen approach to the system build will see the suppliers deliver the constituent components of the system across a series of nine cycles of building, deployment, testing and feedback. Since the build commenced in November 2013, the first two cycles have been completed, with the third due to complete in late March.

During these cycles the project team have held regular workshops with the suppliers to review and refine the components to be delivered in that cycle. Once the components have been deployed for a given cycle the project team then tests the system to ensure that it looks and functions as it should. Feedback is then given to the suppliers and changes made where necessary.

Employees

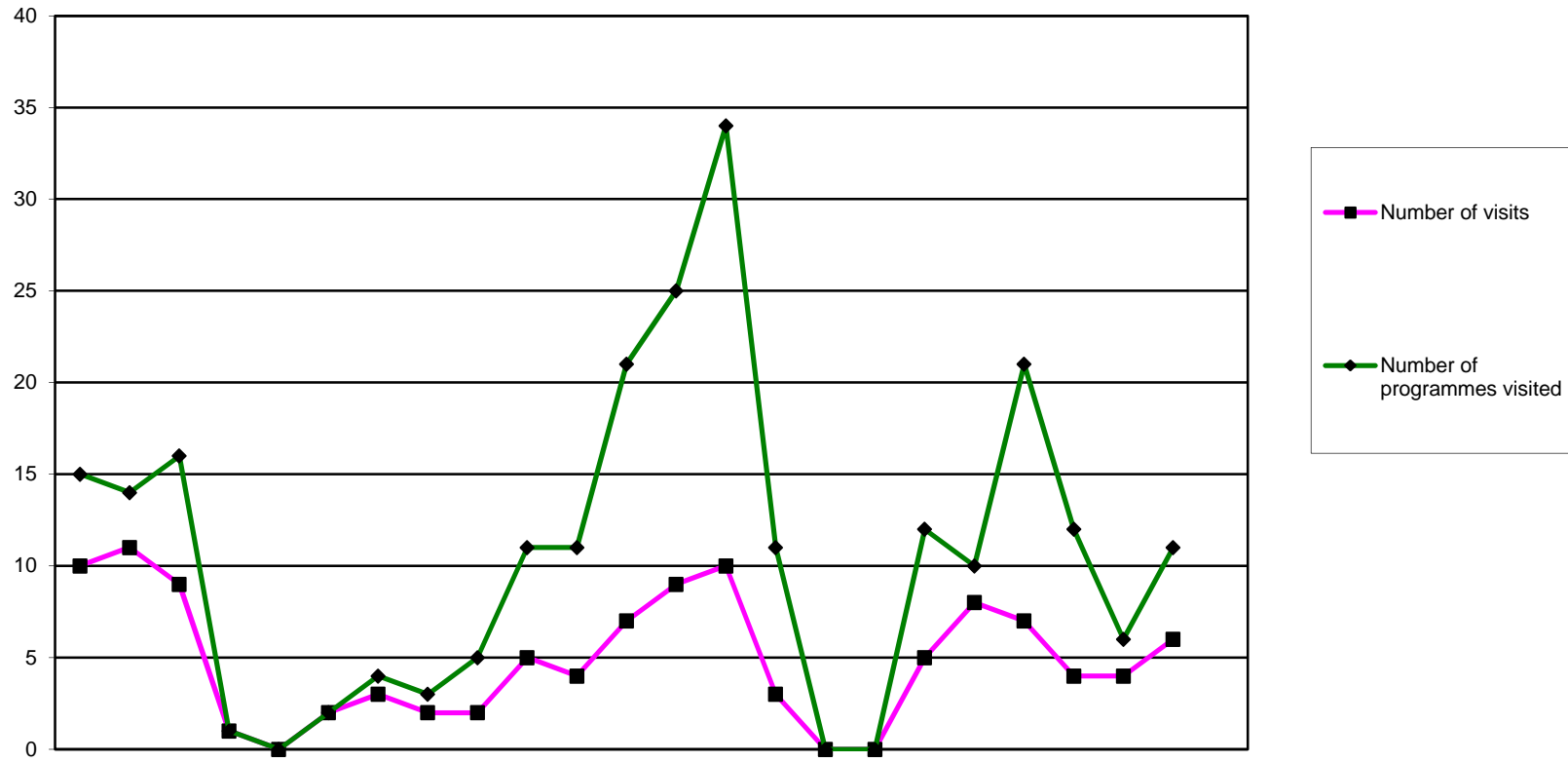
There have been no employee changes in the Department since the last Council meeting on 6 February 2014. The total number of employees remains at 18. Abigail Gorrings has returned from maternity leave and Brendon Edmonds has returned to his substantive Head of Educational Development post.

1 - Number of approved programmes, by profession, April 2012 - March 2014



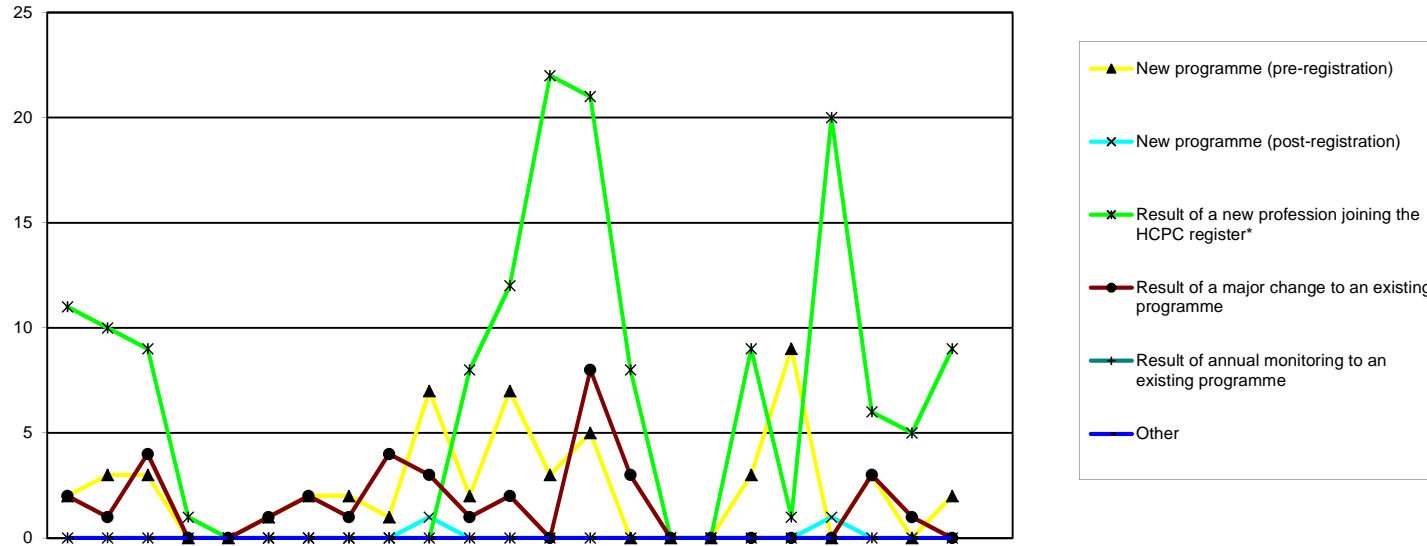
	2012			2013									2014									2011/12 FYE	2012/13 FYE	2013/14 YTD		
	Apr	May	Jun	Jul	Aug	Sep	Oct	Nov	Dec	Jan	Feb	Mar	Apr	May	Jun	Jul	Aug	Sep	Oct	Nov	Dec				Jan	Feb
Arts therapists	20	20	20	29	29	29	29	29	29	29	29	29	29	29	29	29	29	29	29	29	29	30	30	21	29	30
Biomedical scientists	48	51	52	51	51	55	55	54	54	52	60	60	58	56	57	57	57	55	55	55	54	54	49	60	54	
Chiropodists/ Podiatrists	20	20	20	20	20	20	19	19	19	18	18	17	17	17	17	17	17	17	17	16	16	16	20	18	16	
Clinical scientists	1	1	1	1	1	3	3	3	3	3	3	3	3	3	3	3	3	3	3	3	3	3	3	1	3	3
Dietitians	33	33	33	33	33	32	32	32	32	32	32	32	32	32	32	32	32	32	32	32	32	32	32	33	32	32
Hearing aid dispensers	13	13	14	14	17	17	16	16	16	15	15	15	15	15	17	17	18	18	18	18	18	18	18	18	15	18
Occupational therapists	74	74	74	74	74	74	73	73	74	73	73	73	73	77	78	75	75	75	75	73	73	70	71	74	73	71
Operating department practitioners	32	31	33	33	33	33	33	33	33	33	35	35	35	37	37	35	35	34	34	34	34	33	34	34	35	34
Orthoptists	3	3	3	3	3	3	3	3	3	3	3	3	3	3	3	3	3	3	3	3	3	3	3	3	3	3
Paramedics	50	48	49	47	48	48	48	48	48	48	48	50	50	49	50	50	50	48	48	49	49	49	49	50	50	49
Physiotherapists	65	65	65	65	65	64	63	63	64	64	65	65	65	66	67	68	67	67	67	65	65	65	65	67	65	65
Practitioner psychologists	95	94	94	94	94	93	93	93	93	93	91	91	91	93	93	93	92	93	93	91	91	91	91	95	91	91
Prosthetists/Orthotists	3	3	3	3	3	3	3	3	3	3	3	3	3	3	3	3	3	3	3	3	3	3	3	3	3	3
Radiographers	55	54	54	54	54	54	54	54	53	53	53	53	53	53	53	53	53	53	53	53	53	51	51	56	53	51
Social workers in England					271	267	265	264	259	248	237	231	212	209	216	214	221	222	221	225	225	224	226		231	226
Speech and language therapists	32	31	31	31	31	31	31	31	31	31	31	31	31	32	32	32	32	32	32	32	32	31	31	32	31	31
Local anaesthesia	2	2	4	4	4	4	4	4	4	4	4	4	4	4	4	4	4	4	4	4	4	4	4	2	4	4
Prescription only medicine	9	9	9	9	9	9	9	9	9	9	9	9	9	9	9	10	10	10	10	10	10	10	10	9	9	10
Supplementary prescribing	77	77	77	77	77	77	76	76	76	78	76	77	77	76	76	76	77	44	46	46	55	58	62	77	77	62
Independent prescribing																				53	53	86			86	
Approved mental health professionals					31	27	27	29	28	27	27	27	27	27	27	27	27	27	27	27	27	26	26		27	26
Total approved programmes	632	629	636	642	948	944	937	936	931	917	912	909	887	890	903	897	905	871	870	869	930	925	965	644	909	965
Total approved education providers	128	127	128	129	151	151	152	151	151	151	149	150	149	149	150	149	149	147	147	149	150	150	151	128	150	151

2 - Overview of approval visits April 2012 - March 2014



	2012			2013									2014						2009/10	2010/11	2011/12	2012/13	2013/14						
	Apr	May	Jun	Jul	Aug	Sep	Oct	Nov	Dec	Jan	Feb	Mar	Apr	May	Jun	Jul	Aug	Sep	Oct	Nov	Dec	Jan	Feb	Mar	FYE	FYE	FYE	FYE	YTD
Overview of approval visits																													
Number of visits	10	11	9	1	0	2	3	2	2	5	4	7	9	10	3	0	0	5	8	7	4	4	6		38	58	59	56	56
Number of programmes visited	15	14	16	1	0	2	4	3	5	11	11	21	25	34	11	0	0	12	10	21	12	6	11		80	101	112	103	142

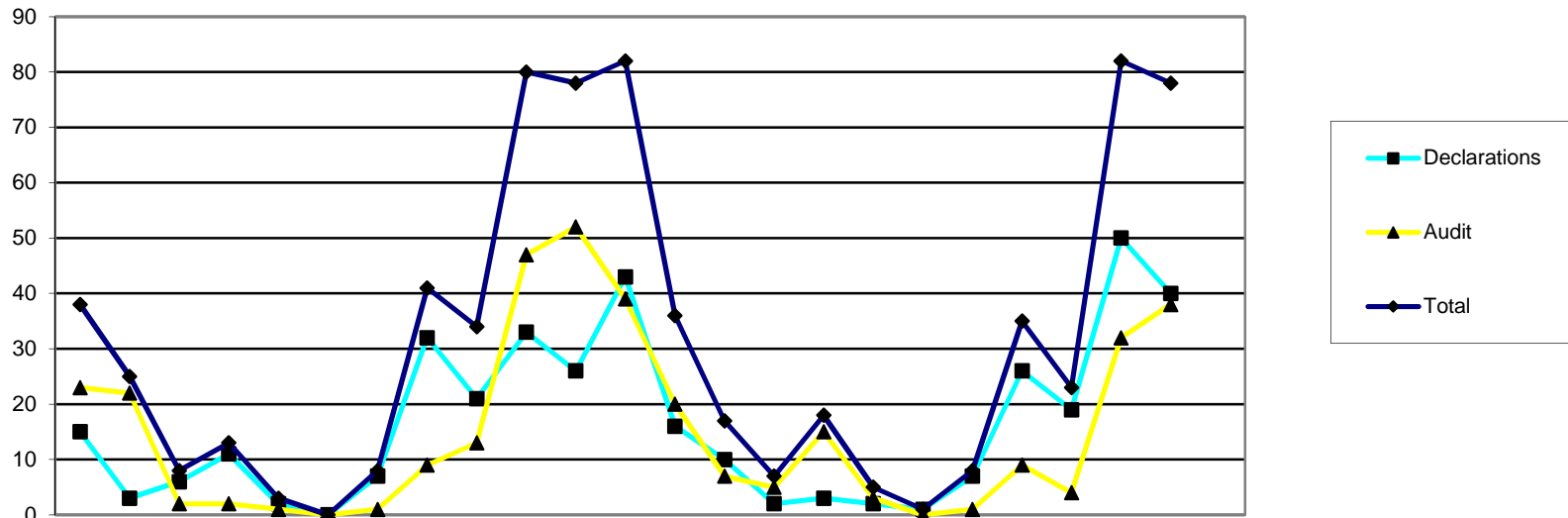
3 - Reasons for approval visits April 2012 - March 2014



Reason for programme visited	2012			2013												2014			2009/10	2010/11	2011/12	2012/13	2013/14						
	Apr	May	Jun	Jul	Aug	Sep	Oct	Nov	Dec	Jan	Feb	Mar	Apr	May	Jun	Jul	Aug	Sep	Oct	Nov	Dec	Jan	Feb	Mar	FYE	FYE	FYE	FYE	YTD
New programme (pre-registration)	2	3	3	0	0	1	2	2	1	7	2	7	3	5	0	0	0	3	9	0	3	0	2	25	29	17	30	25	
New programme (post-registration)	0	0	0	0	0	0	0	0	0	0	1	0	0	0	0	0	0	0	0	0	1	0	0	0	1	0	2	1	1
Result of a new profession joining the HCPC register*	11	10	9	1	0	0	0	0	0	0	8	12	22	21	8	0	0	9	1	20	6	5	9	7	31	32	51	101	
Result of a major change to an existing programme	2	1	4	0	0	1	2	1	4	3	1	2	0	8	3	0	0	0	0	0	3	1	0	42	37	57	21	15	
Result of annual monitoring to an existing programme	0	0	0	0	0	0	0	0	0	0	0	0	0	0	0	0	0	0	0	0	0	0	0	3	4	2	0	0	
Other	0	0	0	0	0	0	0	0	0	0	0	0	0	0	0	0	0	0	0	0	0	0	0	2	0	0	0	0	
Total	15	14	16	1	0	2	4	3	5	11	11	21	25	34	11	0	0	12	10	21	12	6	11	80	101	110	103	142	

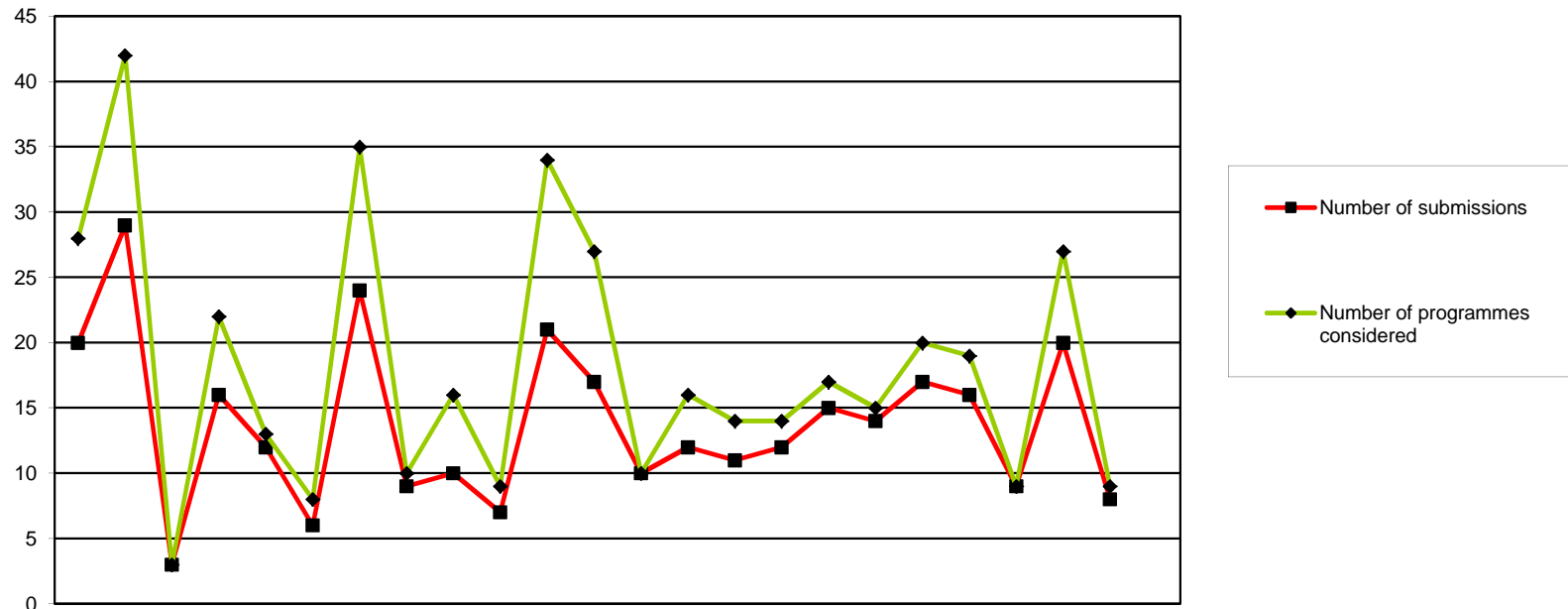
* - Practitioner psychologists July 2009 - July 2012
 - Hearing Aid Dispensers April 2010 - July 2012
 - Social workers in England August 2012 - July 2015

4 - Overview of annual monitoring submissions April 2012 - March 2014



	2012			2013									2014									2009/10	2010/11	2011/12	2012/13	2013/14									
	Apr	May	Jun	Jul	Aug	Sep	Oct	Nov	Dec	Jan	Feb	Mar	Apr	May	Jun	Jul	Aug	Sep	Oct	Nov	Dec	Jan	Feb	Mar	FYE	FYE	FYE	FYE	YTD						
Annual monitoring submissions																																			
Declarations	15	3	6	11	2	0	7	32	21	33	26	43	16	10	2	3	2	1	7	26	19	50	40		105	232	232	199	176						
Audit	23	22	2	2	1	0	1	9	13	47	52	39	20	7	5	15	3	0	1	9	4	32	38		123	257	147	211	134						
Total	38	25	8	13	3	0	8	41	34	80	78	82	36	17	7	18	5	1	8	35	23	82	78		228	489	379	410	310						

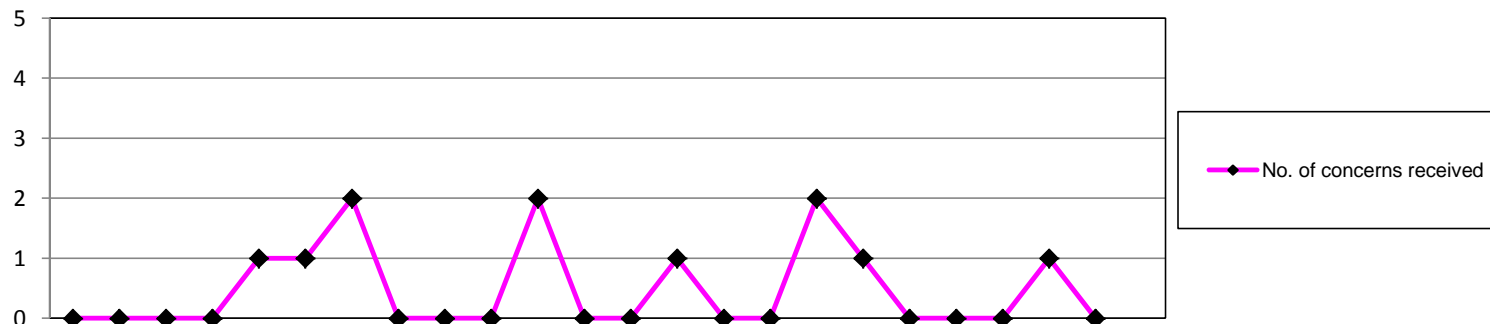
5 - Overview of major change submissions April 2012 - March 2014



	2012			2013						2014															
	Apr	May	Jun	Jul	Aug	Sep	Oct	Nov	Dec	Jan	Feb	Mar	Apr	May	Jun	Jul	Aug	Sep	Oct	Nov	Dec	Jan	Feb	Mar	
Major change submissions																									
Number of submissions	20	29	3	16	12	6	24	9	10	7	21	17	10	12	11	12	15	14	17	16	9	20	8		
Number of programmes considered	28	42	3	22	13	8	35	10	16	9	34	27	10	16	14	14	17	15	20	19	9	27	9		

2009/10	2010/11	2011/12	2012/13	2013/14
FYE	FYE	FYE	FYE	YTD
115	104	146	174	144
179	169	217	247	170

6 - Concerns about approved programmes April 2012 - March 2014



		2012			2013						2014														
		Apr	May	Jun	Jul	Aug	Sep	Oct	Nov	Dec	Jan	Feb	Mar	Apr	May	Jun	Jul	Aug	Sep	Oct	Nov	Dec	Jan	Feb	Mar
Concerns outcomes	No. of concerns received	0	0	0	0	1	1	2	0	0	0	2	0	0	1	0	0	2	1	0	0	0	1	0	
	Directed visit	0	0	0	0	0	0	0	0	0	0	0	0	0	0	0	0	0	0	0	0	0	0	0	
	Approval process	0	0	0	0	0	0	0	0	0	0	0	0	0	0	0	0	0	0	0	0	0	0	0	
	Major change process	0	0	0	0	0	0	0	0	0	0	0	0	0	0	0	0	0	0	0	0	0	0	0	
	Annual monitoring process	0	0	0	0	0	0	0	0	0	0	0	0	0	0	0	0	0	0	0	0	0	0	0	
	Withdrawn	0	0	0	0	0	0	0	0	0	0	0	0	0	0	0	0	0	0	0	0	0	0	0	
	Unsubstantiated	0	0	0	0	1	1	2	0	0	0	2	0	0	1	0	0	1	1	0	0	0	1	0	
Pending	0	0	0	0	0	0	0	0	0	0	0	0	0	0	0	0	1	0	0	0	0	0	0		

	2009/10 FYE	2010/11 FYE	2011/12 FYE	2012/13 FYE	2013/14 YTD
No. of concerns received	6	5	5	6	5
No. of approved progs	480	623	644	909	965
% progs affected by concerns	1.3%	0.8%	0.8%	0.7%	0.5%